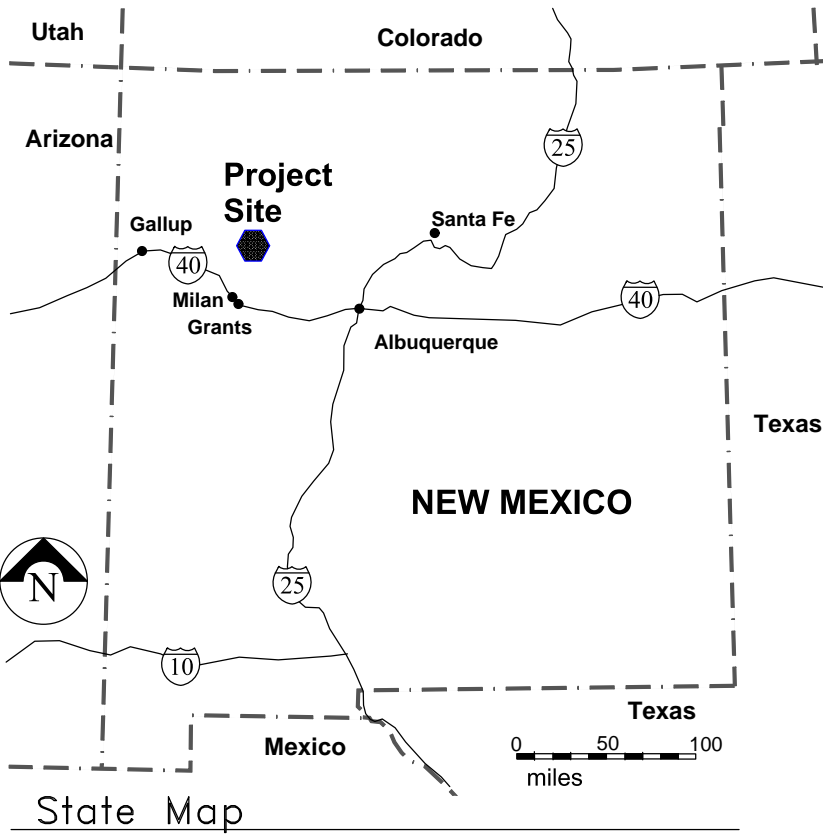


APPENDIX A

DRAWINGS

- MT12-CL-01 Title Sheet
- MT12-CL-02 Closeout Plan Index Sheet
- MT12-CL-03 Gamma and Soil Radium Sample Locations
- MT12-CL-04 Facility Disposition Plan
- MT12-CL-05 Shaft Closure Manway Vent
- MT12-CL-06 Shaft Closure Production Shaft
- MT12-CL-07 Final Grading Plan Mine Water Treatment Pond and Ore Stockpile Area
- MT12-CL-08 Final Grading Plan Waste Rock Pile Area
- MT12-CL-09 Sections Waste Rock Pile Area
- MT12-CL-10 Sections N/S Waste Rock Pile and Typical Mine Water Treatment Pond Infill
- MT12-CL-11 Final Site Grading Plan

Drawings in this update are based on the 1990 topographic base map. A new base map, completed in June 2012, will be used for subsequent revisions of these drawings.



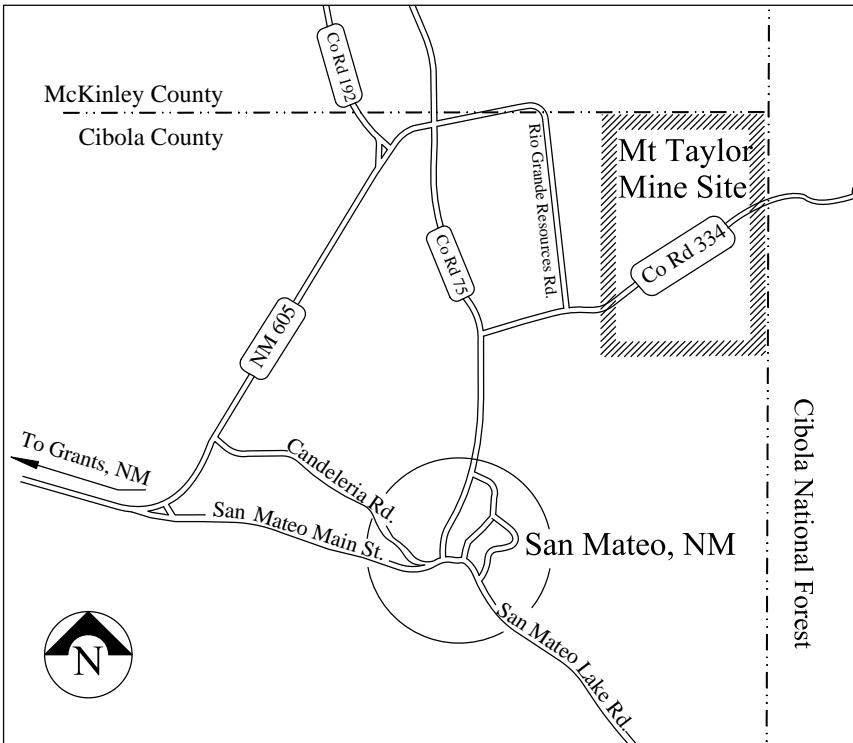
MOUNT TAYLOR MINE CLOSEOUT/CLOSURE PLAN

LIST OF DRAWINGS


REVISION NUMBER	DRAWING NUMBER	DRAWING TITLE
A	MT12-CL-01	TITLE SHEET
A	MT12-CL-02	CLOSEOUT PLAN INDEX SHEET
A	MT12-CL-03	GAMMA AND SOIL RADIUM SAMPLE LOCATIONS
A	MT12-CL-04	FACILITY DISPOSITION PLAN
A	MT12-CL-05	SHAFT CLOSURE - MANWAY / VENT
A	MT12-CL-06	SHAFT CLOSURE - PRODUCTION SHAFT
A	MT12-CL-07	FINAL GRADING PLAN - MINE WATER TREATMENT POND AND ORE STOCKPILE AREAS
A	MT12-CL-08	FINAL GRADING PLAN - WASTE ROCK PILE AREA
A	MT12-CL-9	SECTIONS - WASTE ROCK PILE AREA
A	MT12-CL-10	SECTIONS - N/S WASTE ROCK PILE AND TYPICAL MINE WATER TREATMENT POND INFILL
A	MT12-CL-11	FINAL SITE GRADING PLAN

GENERAL NOTES:

1. FOR DETAILS REGARDING CONSTRUCTION AND MATERIAL REQUIREMENTS FOR THIS PROJECT, SEE THE PROJECT SPECIFICATIONS. IN ANY CASE OF CONFLICT BETWEEN THE DRAWINGS AND SPECIFICATIONS, THE SPECIFICATIONS WILL GOVERN.



Site Location Map

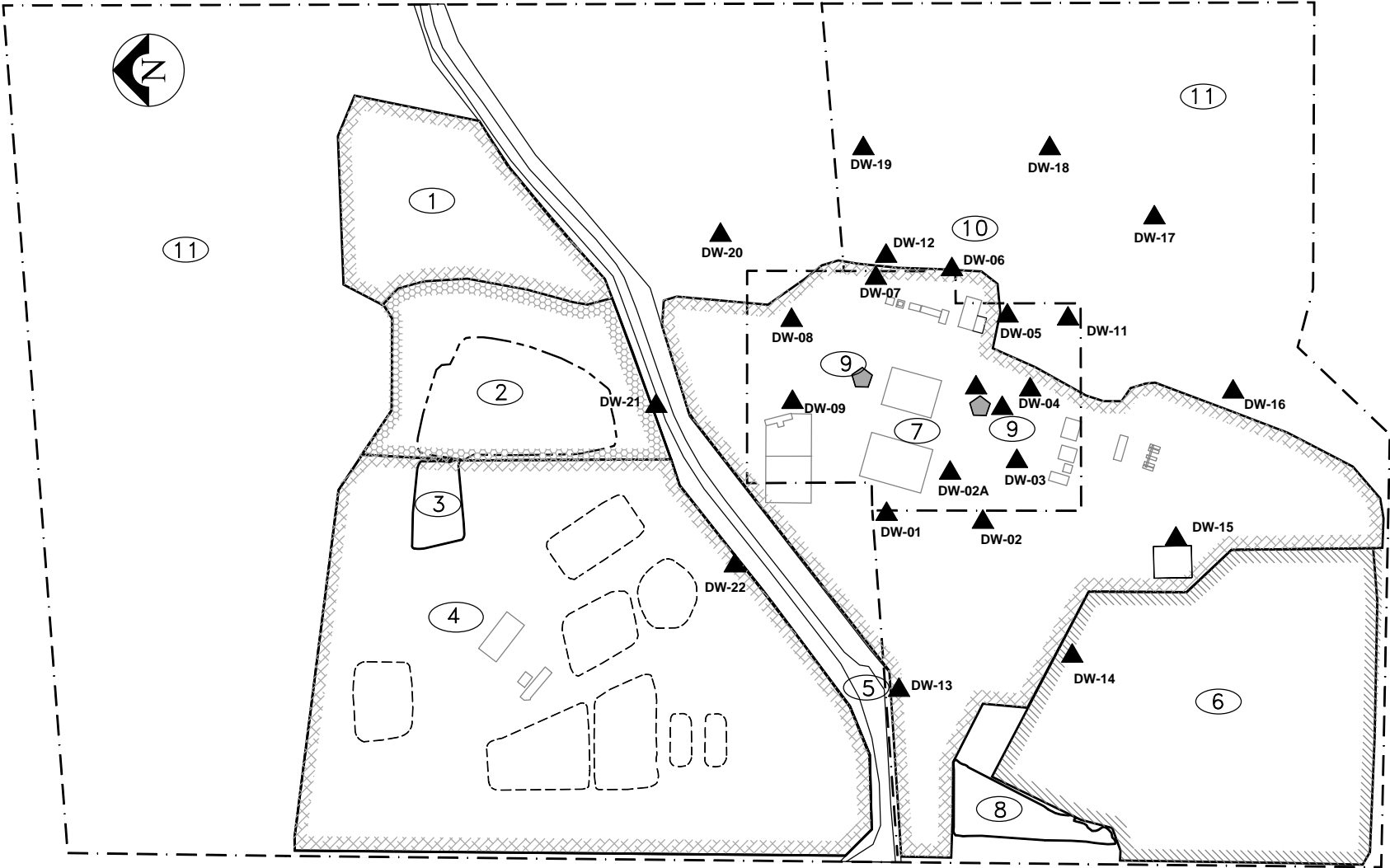
REV	DESCRIPTION	DATE	DRAWN BY	ENGINEER	APPROVED	 RIO GRANDE RESOURCES CORPORATION MOUNT TAYLOR MINE - Grants, NM 87020			PROJECT TITLE: MT. TAYLOR MINE CLOSEOUT/CLOSURE PLAN	
A	2012 UPDATE	7-23-12	EL	AK					SHEET TITLE: Title Sheet	
						Prepared By: Alan Kuhn Associates LLC	SIZE B	SCALE: NONE		
							DWG NO. MT12-CL-01			

CLOSEOUT TASKS

- 01 DEMOLISH FACILITIES NOT RETAINED FOR POST MINING LAND USE
- 02 EXCAVATE ORE AND TRANSPORT TO SHAFTS FOR BACKFILL AND PLUGGING
- 03 REMOVE SEDIMENTS FROM NORTH STORM WATER POND AND DISPOSE IN MINE WATER TREATMENT PONDS.
- 04 REMOVE SEDIMENTS FROM SOUTH STORM WATER POND AND DISPOSE IN WASTE ROCK PILE.
- 05 REMOVE CONTAMINATED SOIL AND DISPOSE IN MINE WATER TREATMENT PONDS
- 06 BACKFILL AND COVER MINE WATER TREATMENT PONDS WITH CLEAN SOIL FROM POND BERMS
- 07 REMOVE CONTAMINATED SOIL AND DISPOSE IN WASTE ROCK PILE
- 08 CUT AND FILL TO RESHAPE SLOPES
- 09 FINISH GRADE
- 10 REVEGETATE DISTURBED AREAS
- 11 RIP RAP AND ROCK MULCH
- 12 BACKFILL AND PLUG VENTS AND CONDUITS
- 13 FINISH GRADE FOR POSITIVE DRAINAGE AWAY FROM BUILDINGS
- 14 PLUG ALL WELLS NOT RETAINED FOR POST-MINING LAND USE
WELLS TO BE RETAINED – 1, 2a, 3, 4, 5, 6, 7, 8, and 10

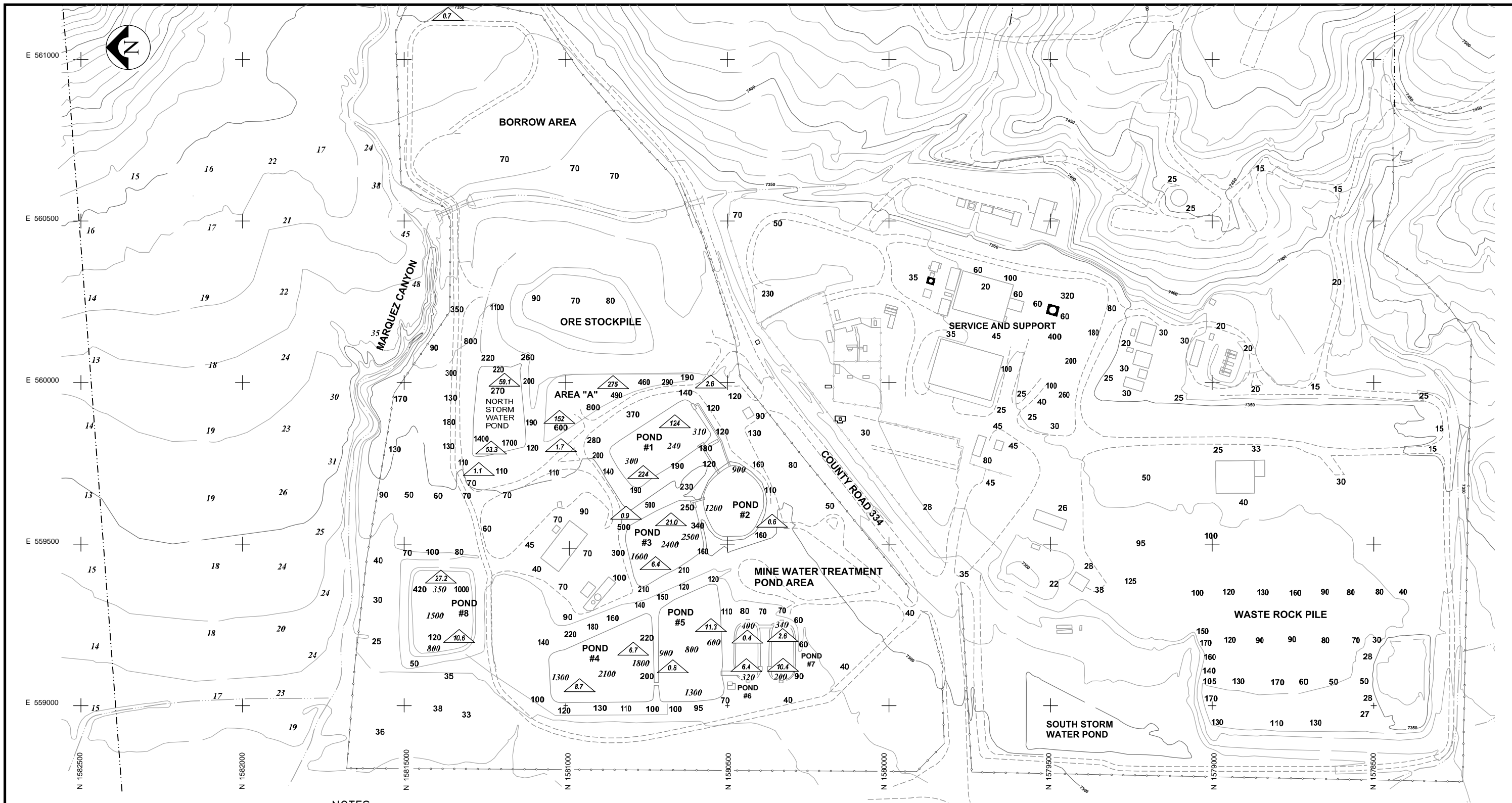
LEGEND

- PROPERTY LINE
- WELLS
- POND OR ORE PILE FOOTPRINT
- EXISTING BUILDING
- MINE SHAFTS

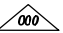


AREA DESCRIPTION	DRAWINGS (MT12-CL-XX)	TASKS	CUT / FILL	REMOVAL OF CONTAMINATED SOIL	FINISH GRADING	REVEGETATION	EROSION CONTROL
1 BORROW AREA	02, 03, 07	5,9,10	IF NEEDED	6700 CY	8.25 Acres	8.25 Acres	NA
2 ORE STOCKPILE	02, 03, 08, 09	2,5,9,10	63,000 CY	4500 CY	9.9 Acres	9.90 Acres	NA
3 NORTH STORMWATER POND	02, 03, 07	3,9	NA	770 CY	NA	NA	NA
4 MINE WATER TREATMENT POND AREA AND AREA "A"	02, 03, 04, 07	1,5,6,9,10	118,550 CY	37,420 CY	43.5 Acres	43.50 Acres	NA
5 COUNTY ROAD ROW	02, 03	7,9,10	NA	4660 CY	5.8 Acres	5.80 Acres	NA
6 WASTE ROCK PILE AREA	02, 03, 08, 09	8,9,10,11	78,000 CY	NA	21.7 Acres	21.70 Acres	51,500 SF
7 SERVICE AND SUPPORT	02, 03, 04	1,7,9,10,13	NA	32,000 CY	38.6 Acres	38.60 Acres	NA
8 SOUTH STORMWATER POND	02, 03, 08	4,9	NA	6,220 CY	NA	NA	NA
9 MINE SHAFTS MANWAY AND PRODUCTION	05, 06	12	NA	NA	NA	NA	NA
10 DEWATERING WELLS	02, 04	14	NA	NA	NA	NA	NA
11 UNDEVELOPED AREAS	02	10	NA	NA	NA	4.90 Acres	NA

REV	DESCRIPTION	DATE	DRAWN BY	ENGINEER	APPROVED	<div>RIO GRANDE RESOURCES CORPORATION MOUNT TAYLOR MINE - Grants, NM 87020</div>			PROJECT TITLE: MT. TAYLOR MINE CLOSEOUT/CLOSURE PLAN	
A	2012 UPDATE	7-23-12	EL	AK					SHEET TITLE: Closeout Plan Index Sheet	REV A
						Prepared By:	SIZE B	SCALE: 1" =500'		
						Alan Kuhn Associates LLC	DWG NO.	MT12-CL-02		



LEGEND

-  SOIL RADIUM READINGS (pCi/g)
(Ra 226 IN 0-6 INCHES)
- 21 GAMMA READINGS APRIL 2012
- 38 GAMMA READINGS MAY 2002

NOTES

- 1 ALL SAMPLING LOCATIONS APPROXIMATE
- 2 SOIL SAMPLING IN MINE WATER
TREATMENT PONDS APRIL 10, 2012
- 3 GAMMA RAY SURVEY MAY 23, 2002
READINGS IN uR/hr
BACKGROUND +OR- 18 uR/hr
- 4 GAMMA RAY SURVEY APRIL 10, 2012
READINGS IN uR/hr
BACKGROUND +OR- 12 uR/hr
INSTRUMENT: Eberline PRM-7 #182,

REV	DESCRIPTION	DATE	DRAWN BY	ENGINEER	APPROVED
A	2012 UPDATE	7-23-12	EL	AK	

 **RIO GRANDE RESOURCES CORPORATION**
MOUNT TAYLOR MINE - Grants, NM 87020

Prepared By:
Alan Kuhn Associates LLC

SIZE
B

SCALE:
1"=300'

DWG
NO. MT12-CL-03

PROJECT TITLE:
**MT. TAYLOR MINE
CLOSEOUT/CLOSURE PLAN**

SHEET TITLE:
**Gamma And Soil Radium
Sample Locations**

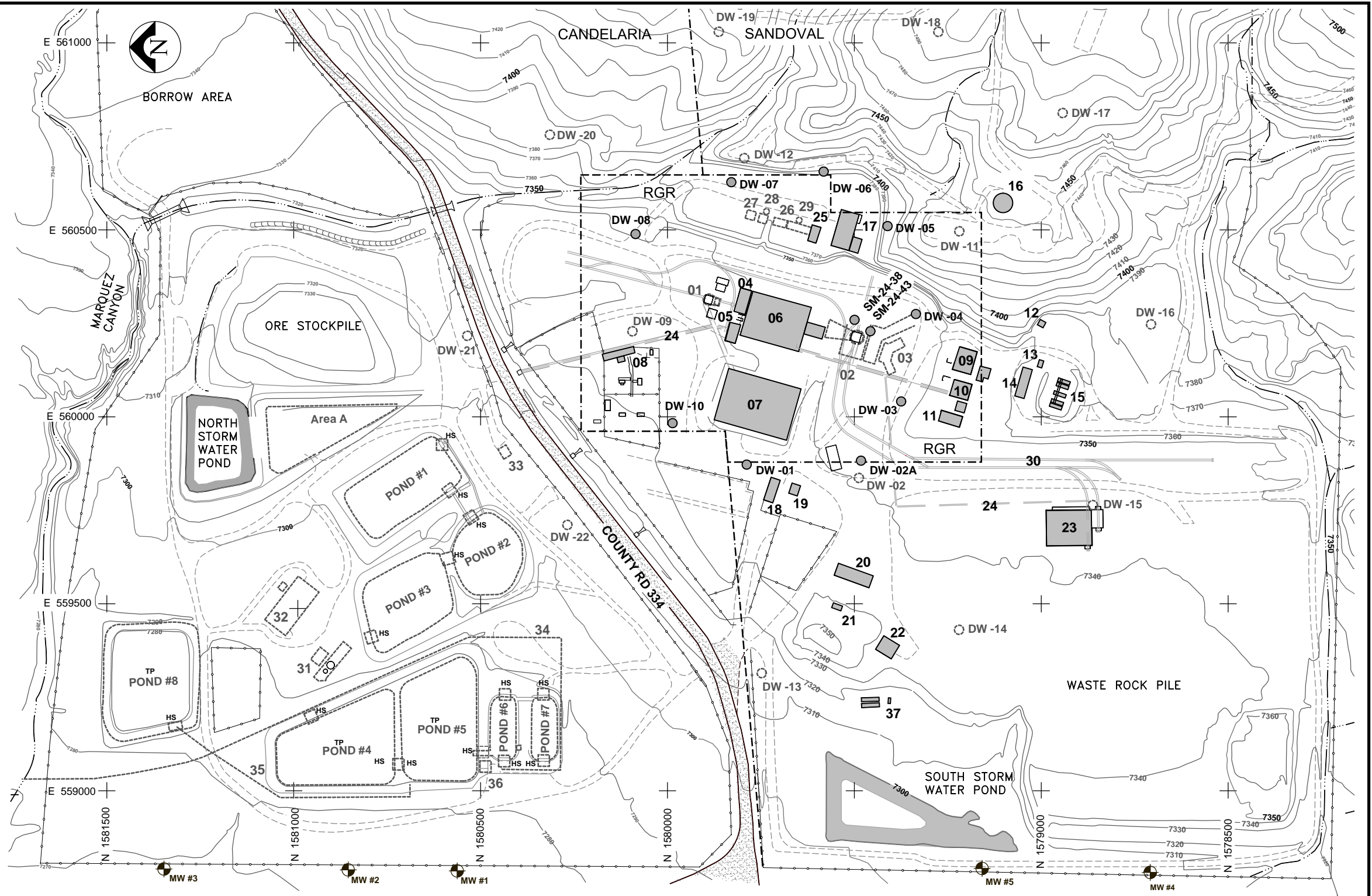
REV
A

FACILITIES TO BE REMOVED	FACILITIES TO REMAIN
01 MANWAY/VENT SHAFT HEADFRAME AND HEATER BUILDINGS	04 STORAGE BUILDING
02 PRODUCTION SHAFT HEADFRAME	06 HOIST HOUSE
03 VENT FAN STRUCTURE	07 SERVICE BUILDING
05 GLYCOL HEAT EXCHANGER	08 SUBSTATION (NOTE 1)
26 COOLING TOWER	09 WATER TREATMENT
27 CHLORINE BUILDING	10 COMPRESSOR BUILDING
28 CONDUIT 1	11 ELECTRICAL BUILDING
29 CONDUIT 2	12 PORTABLE BUILDING
30 MINE CAR RAILS	13 FUEL PUMP HOUSE
31 BARIUM CHLORIDE BUILDING	14 CARPENTER SHOP
32 ION EXCHANGE PLANT	15 FUEL STORAGE TANKS
33 FLOCCULANT BUILDING	16 WATER TANK
34 TREATED WATER PIPELINE	17 YORK CHILLER
35 MINE DISCHARGE PIPELINE	18 GUARD HOUSE
36 PUMP HOUSES	19 FIRE EQUIPMENT
TP WATER TREATMENT PONDS (PONDS #1 THROUGH #8)	20 CORE STORAGE
HS (14) HYDRAULIC CONTROL STRUCTURES	21 ADOBE HOUSE (PRE-MINING STRUCTURE)
	22 FAN SHOP
	23 CAR SHOP
	24 ACCESS/UTILITY TUNNEL
	25 PUMP BUILDING
	37 SEWAGE TREATMENT AND LEACH FIELD

<p>DW-00</p> <p>WELLS TO BE PLUGGED</p> <p>DW-02 AND DW-09 DW-11 THROUGH DW-22 SM24-38 AND SM24-43 MONITORING WELLS</p>	<p>DW-00</p> <p>WELLS TO REMAIN</p> <p>DW-01 DW-2A THROUGH DW-08 AND DW-10</p>
---	---


ORE STOCKPILE - 9.9 ACRES (TO BE REMOVED)
STORM WATER PONDS - 3.7 ACRES
NORTH AND SOUTH - (TO REMAIN)
WASTE ROCK PILE AREA 21.7 ACRES
(REMAINS BUT CLOSED)
COUNTY ROAD 334 ROW- 8.4 ACRES (NOTE 1)

- 1 COUNTY ROAD 334 AND SUBSTATION: FACILITIES OWNED BY OTHERS – NOT WITHIN PERMIT AND NOT SUBJECT TO CLOSEOUT
- 2 EXISTING TREATED WATER DISCHARGE PIPELINE (#34) (APPROX 4.3 MILES) TO BE REMOVED
- 3 MINE DISCHARGE PIPELINE (#35) (NOT SHOWN) TO BE REMOVED
- 4 MONITORING WELLS ARE PART OF STAGE 2 ABATEMENT PLAN TO BE PLUGGED.

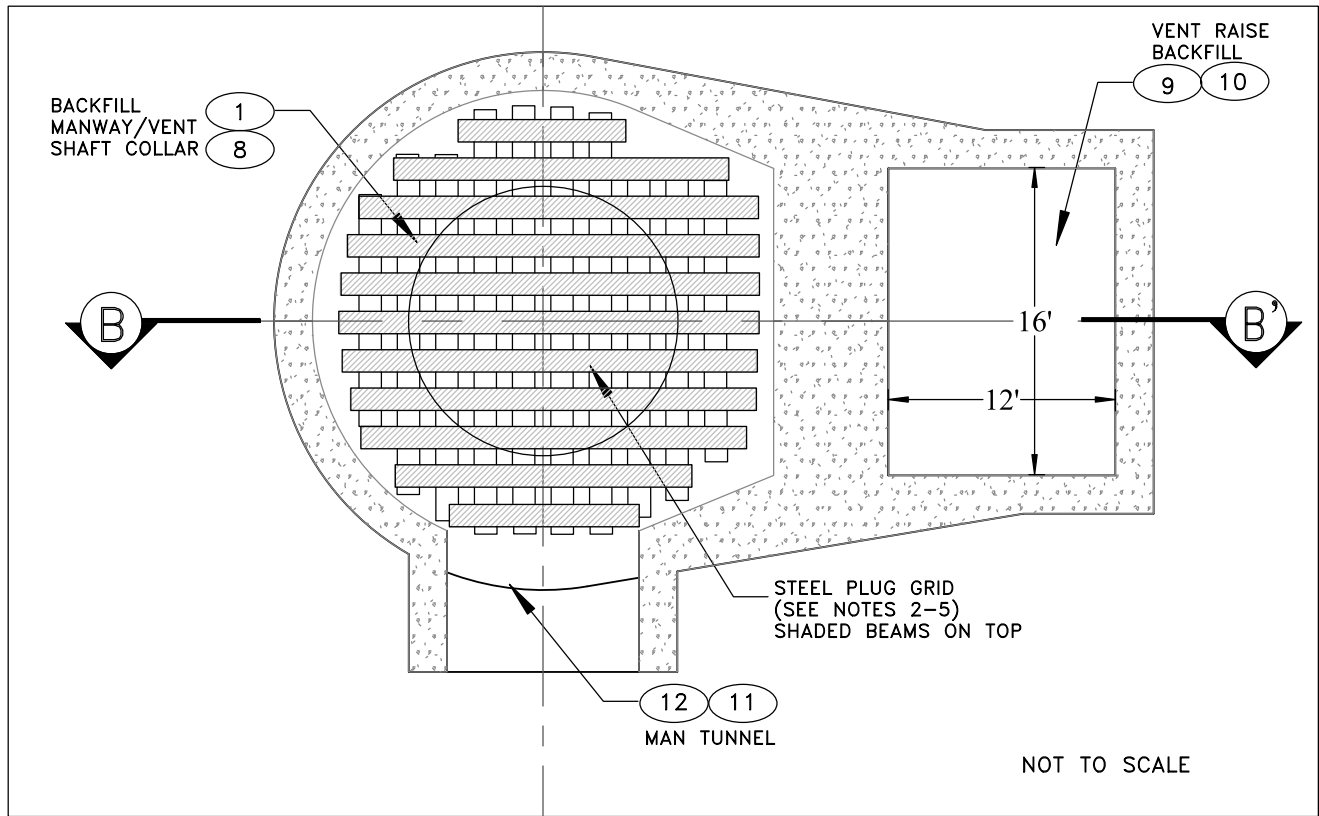


 FACILITY TO BE REMOVED
 FACILITY TO REMAIN
 DW-00 WELL (TO BE PLUGGED)
 DW-00 WELL (TO REMAIN)

 PROPERTY LINE
 MONITORING WELL (TO BE PLUGGED)
 EXISTING FENCELINE

REV	DESCRIPTION	DATE	DRAWN BY	ENGINEER	APPROVED	<div>RIO GRANDE RESOURCES CORPORATION</div> <div>MOUNT TAYLOR MINE - Grants, NM 87020</div>			PROJECT TITLE: MT. TAYLOR MINE CLOSEOUT/CLOSURE PLAN		
A	2012 UPDATE	7-23-12	EL	AK		Prepared By:		SIZE B	SCALE: 1"=300'	SHEET TITLE: Facility Disposition Plan	REV
						Alan Kuhn Associates LLC		DWG NO.	MT12-CL-04		A

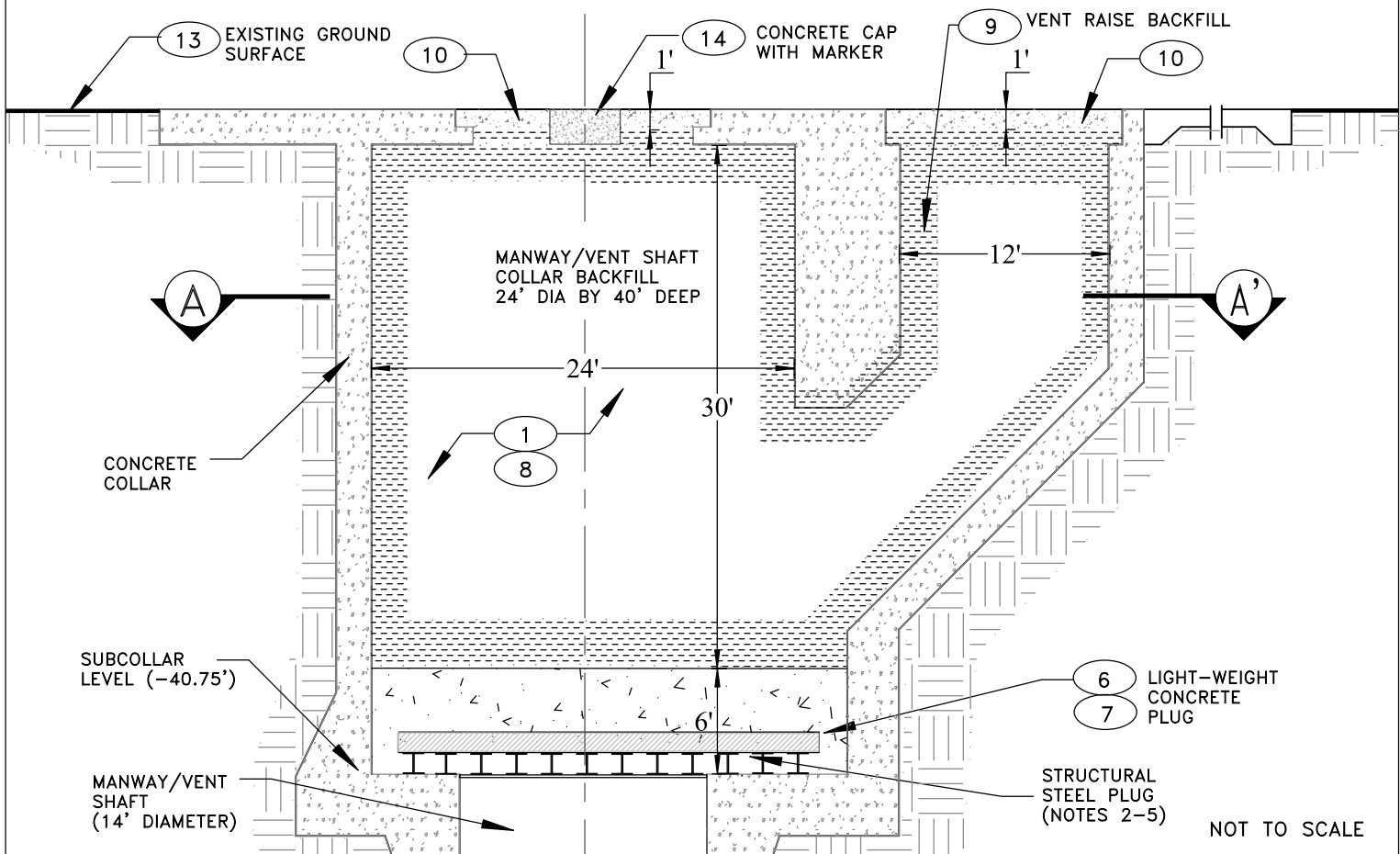
SECTION A-A'



NOTES:

- 1 REMOVE AND DROP ALL EQUIPMENT, FITTINGS, AND UTILITIES BETWEEN COLLAR TO SUB COLLAR LEVEL.
- 2 LOWER LEVEL STRUCTURAL STEEL = UP TO 23' LONG STEEL BEAMS
11 BEAMS @ 2 FEET O.C. (W14 X 90)
LOWER LEVEL BEAMS PLACED ON EXISTING CONCRETE SUBCOLLAR LEVEL.
BEAMS TO EXTEND A MINIMUM 1.5' AT EACH END BEYOND SUBCOLLAR OPENING.
- 3 UPPER LEVEL STRUCTURAL STEEL = UP TO 23' LONG STEEL BEAMS
11 BEAMS @ 2 FEET O.C. (W14 X 90)
UPPER LEVEL BEAMS PLACED PERPENDICULAR TO LOWER LEVEL BEAMS.
- 4 STRUCTURAL STEEL BEAMS RECYCLED FROM HEADFRAME DEMOLITION AND STEEL POSTS AND CAPS STORED ON SITE. NO PURCHASE OF NEW STEEL REQUIRED.
- 5 WELD SCRAP PLATE OR SHEET METAL TO THE BOTTOM OF THE STEEL BEAMS. FABRICATE THE BEAMS AND PLATES IN SECTIONS AT THE GROUND SURFACE AND LOWER INTO THE MANWAY SHAFT COLLAR TO THE POSITION SHOWN IN SECTION BB. CONTRACTOR TO DETERMINE MEANS AND METHODS OF FABRICATION AND INSTALLING FABRICATED SECTIONS INTO PLACE.
- 6 INSTALL LIGHTWEIGHT CONCRETE AT SUBCOLLAR LEVEL (-40.75' TO -34.75')
- 7 EMBED SCRAP CYCLONE FENCE OR OTHER SCRAP STEEL MESH IN LIGHT WEIGHT CONCRETE
- 8 TREMIE PLACED SLURRY BACKFILL WILL INCLUDE ORE, PORTLAND CEMENT, AND FLY ASH, IN PROPORTIONS TO BE DETERMINED BY BENCH TESTS TO PRODUCE 28-DAY UCS OF 50 TO 100 PSI.
- 9 VENT RAISE AND MAN TUNNEL BACKFILLED USING SAME SLURRY FILL AS SPECIFIED FOR FILL IN THE COLLAR STRUCTURE. VENT RAISE IS SHOWN IN SECTIONS AA AND BB.

SECTION B-B'



- 10 IN VENT RAISE AND COLLAR SLURRY BACKFILL TO EXTEND TO WITHIN 1 FOOT OF THE GROUND SURFACE THEN CAPPED WITH LIGHT-WEIGHT CONCRETE.
- 11 THE PORTION OF THE MAN-TUNNEL RECEIVING BACKFILL IS 10 FEET WIDE, 11 FEET HIGH, AND 40 FEET LONG.
- 12 THE SLURRY BACKFILL IN THE MAN-TUNNEL CAN BE PLACED DIRECTLY AGAINST THE EXISTING STEEL SURE-LOCK DOORS. NO ADDITIONAL CONCRETE BULKHEADS WILL BE NEEDED.
- 13 THE TOP OF THE NATURAL ROCK AT THIS LOCATION IS APPROXIMATELY AT THE EXISTING GROUND SURFACE
- 14 THE SHAFT MARKER TO BE CONSTRUCTED FROM PRECAST CONCRETE WITH A MINIMUM UNCONFINED COMPRESSIVE STRENGTH OF 2500 PSI. THE MARKER SHALL BE 4 FEET WIDE AND 4 FEET LONG AND 2 FEET THICK AND BE INSCRIBED USING 4 INCH LETTERS EMBEDDED A MINIMUM OF 1/4 INCH DEEP AND STATING THE FOLLOWING: "MOUNT TAYLOR MINE MANWAY/VENT SHAFT, CLOSED (DATE)."

STEEL BEAMS

QTY	LENGTH FEET
9	22.5
4	20.0
3	18.0
3	15.0
2	10.0

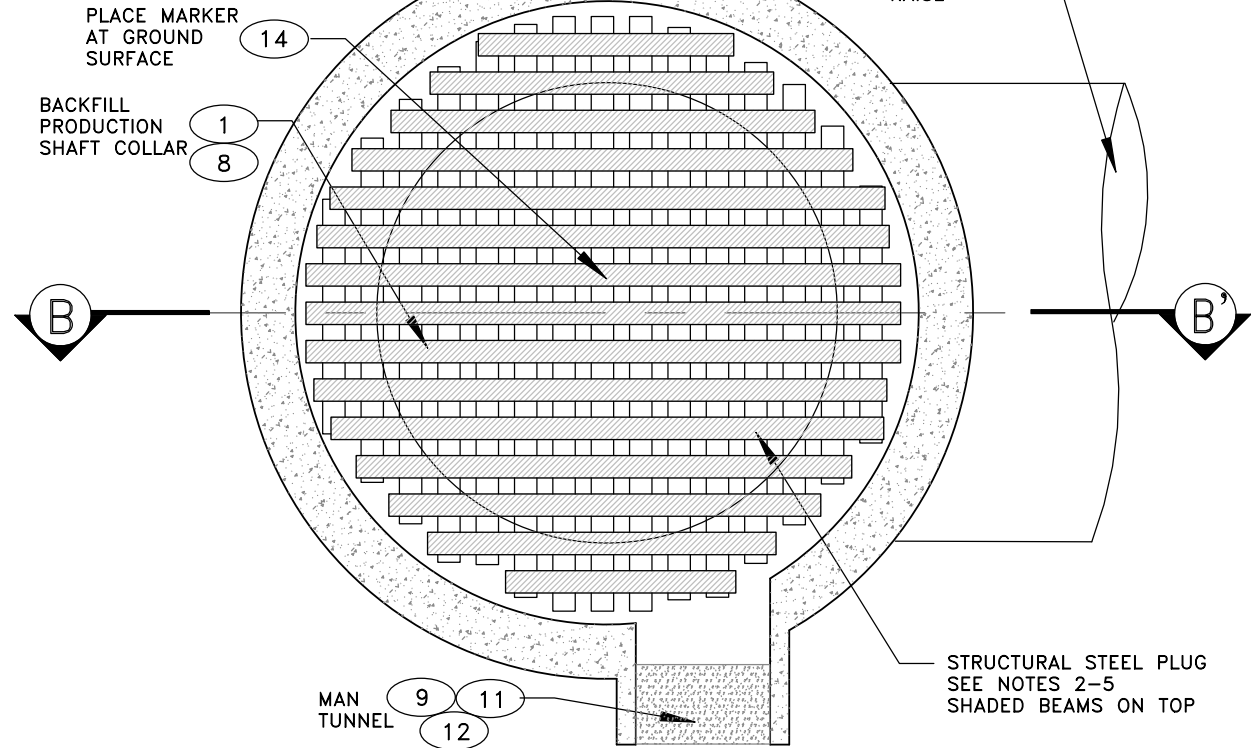
LIST OF MATERIALS

STEEL PLATE	460 SF
LIGHT WEIGHT CONCRETE	160 CY
BACKFILL SLURRY TOTAL	563 CY
ORE	510 CY
CEMENT	28 CY
FLY ASH	28 CY
3000 PSI CONCRETE	1.2 CY

REV	DESCRIPTION	DATE	DRAWN BY	ENGINEER	APPROVED	RIO GRANDE RESOURCES CORPORATION			PROJECT TITLE: MT. TAYLOR MINE CLOSEOUT/CLOSURE PLAN		REV
A	2012 UPDATE	7-16-12	EL	AK		MOUNT TAYLOR MINE - Grants, NM 87020			SHEET TITLE: Shaft Closure - Manway / Vent		A
						Prepared By:	SIZE B	SCALE: NTS			
						Alan Kuhn Associates LLC	DWG NO. MT12-CL-05				

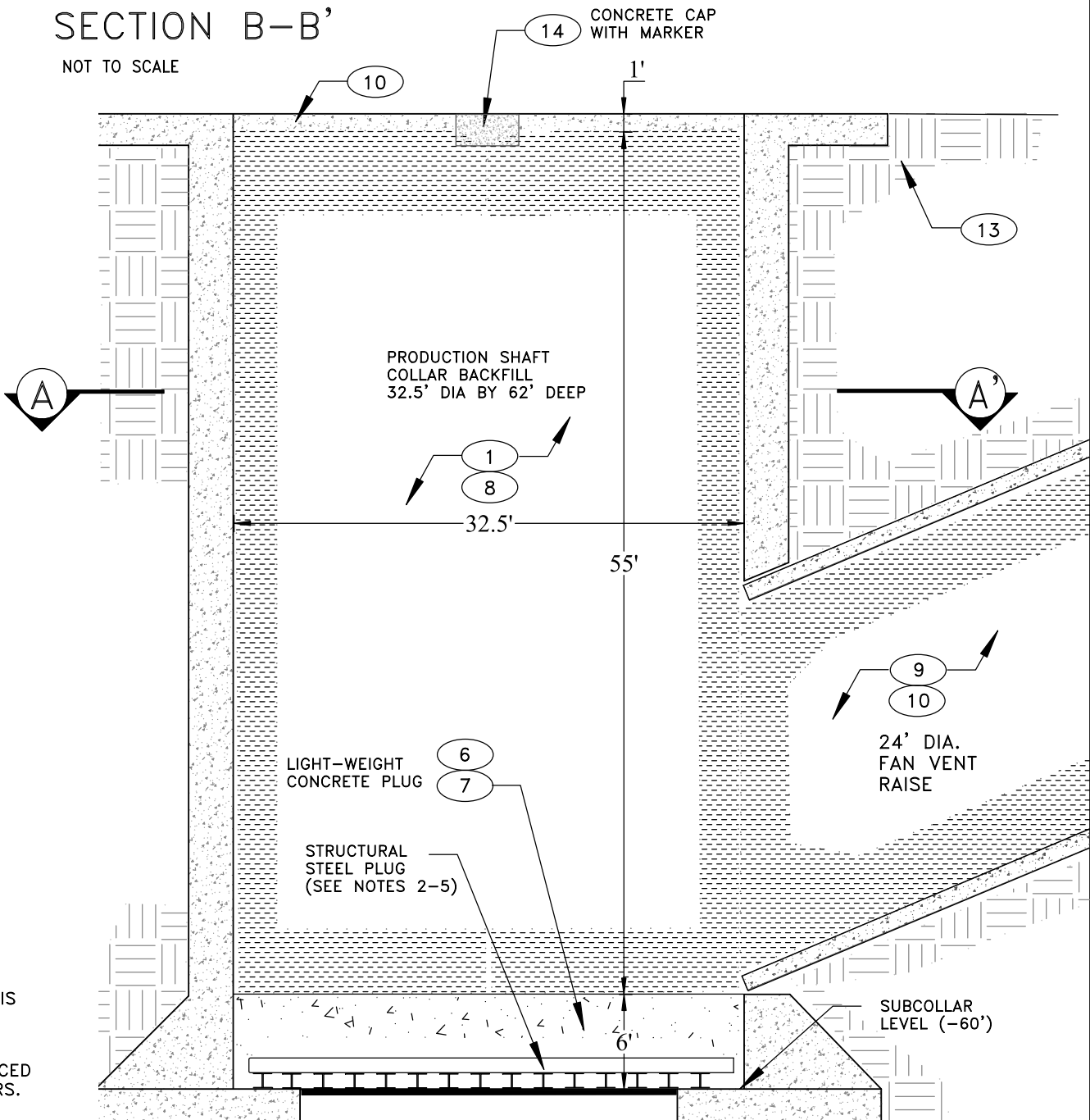
SECTION A-A'

NOT TO SCALE



SECTION B-B'

NOT TO SCALE



NOTES:

- 1 REMOVE AND DROP ALL EQUIPMENT, FITTINGS, AND UTILITIES BETWEEN COLLAR TO SUB COLLAR LEVEL.
- 2 LOWER LEVEL STRUCTURAL STEEL = UP TO 31' LONG STEEL BEAMS 15 BEAMS @ 2 FEET O.C. (W14 X 90)
LOWER LEVEL BEAMS PLACED ON EXISTING CONCRETE SUBCOLLAR LEVEL. BEAMS TO EXTEND A MINIMUM 1.5' AT EACH END BEYOND SUBCOLLAR OPENING.
- 3 UPPER LEVEL STRUCTURAL STEEL = UP TO 31' LONG STEEL BEAMS 15 BEAMS @ 2 FEET O.C. (W14 x 90)
UPPER LEVEL BEAMS PLACED PERPENDICULAR TO LOWER LEVEL BEAMS.
- 4 STRUCTURAL STEEL BEAMS RECYCLED FROM HEADFRAME DEMOLITION AND STEEL POSTS AND CAPS STORED ON SITE. NO PURCHASE OF NEW STEEL REQUIRED.
- 5 WELD SCRAP PLATE OR SHEET METAL TO THE BOTTOM OF THE STEEL BEAMS. FABRICATE THE BEAMS AND PLATES IN SECTIONS AT THE GROUND SURFACE AND LOWER INTO THE MANWAY SHAFT COLLAR TO THE POSITION SHOWN IN SECTION BB. CONTRACTOR TO DETERMINE MEANS AND METHODS OF FABRICATION AND INSTALLING FABRICATED SECTIONS INTO PLACE.
- 6 INSTALL LIGHTWEIGHT CONCRETE AT SUBCOLLAR LEVEL (-60.0' TO -54.0')
- 7 EMBED SCRAP CYCLONE FENCE OR OTHER SCRAP STEEL MESH IN LIGHT WEIGHT CONCRETE
- 8 SLURRY BACKFILL WILL INCLUDE ORE, PORTLAND CEMENT, AND FLY ASH, IN PROPORTIONS TO BE DETERMINED BY BENCH TESTS TO PRODUCE 28-DAY UCS OF 50 TO 100 PSI.

- 9 VENT RAISE AND MAN TUNNEL BACKFILLED USING SAME SLURRY FILL AS SPECIFIED FOR FILL IN THE COLLAR STRUCTURE. VENT RAISE IS 68 FEET LONG AND 24 FEET DIAMETER
- 10 IN VENT RAISE AND COLLAR SLURRY BACKFILL TO EXTEND TO WITHIN 1 FOOT OF THE GROUND SURFACE THEN CAPPED WITH LIGHT-WEIGHT CONCRETE.
- 11 THE PORTION OF THE MAN-TUNNEL RECEIVING BACKFILL IS 10 FEET WIDE, 11 FEET HIGH, AND 50 FEET LONG.
- 12 THE SLURRY BACKFILL IN THE MAN-TUNNEL CAN BE PLACED DIRECTLY AGAINST THE EXISTING STEEL SURE-LOCK DOORS. NO ADDITIONAL CONCRETE BULKHEADS WILL BE NEEDED.
- 13 THE TOP OF THE NATURAL ROCK AT THIS LOCATION IS APPROXIMATELY AT THE EXISTING GROUND SURFACE
- 14 THE SHAFT MARKER TO BE CONSTRUCTED FROM PRECAST CONCRETE WITH A MINIMUM UNCONFINED COMPRESSIVE STRENGTH OF 2500 PSI. THE MARKER SHALL BE 4 FEET WIDE AND 4 FEET LONG AND 2 FEET THICK AND BE INSCRIBED USING 4 INCH LETTERS EMBEDDED A MINIMUM OF 1/4 INCH DEEP AND STATING THE FOLLOWING: "MOUNT TAYLOR MINE PRODUCTION SHAFT CLOSED (DATE)."

STEEL BEAMS

QTY	LENGTH FEET
10	31.0
4	29.0
4	26.0
4	22.0
4	18.0
4	14.0

LIST OF MATERIALS

STEEL PLATE	830 SF
LIGHT WEIGHT CONCRETE	215 CY
BACKFILL SLURRY TOTAL	2950 CY
3000 PSI CONCRETE	1.2 CY

REV	DESCRIPTION	DATE	DRAWN BY	ENGINEER	APPROVED
A	2012 UPDATE	7-23-12	EL	AK	



RIO GRANDE RESOURCES CORPORATION
MOUNT TAYLOR MINE - Grants, NM 87020

Prepared By:	SIZE	SCALE:
Alan Kuhn Associates LLC	B	NTS
	DWG NO.	MT12-CL-06

PROJECT TITLE: **MT. TAYLOR MINE
CLOSEOUT/CLOSURE PLAN**

SHEET TITLE: **Shaft Closure- Production Shaft**

REV **A**

NOTES:

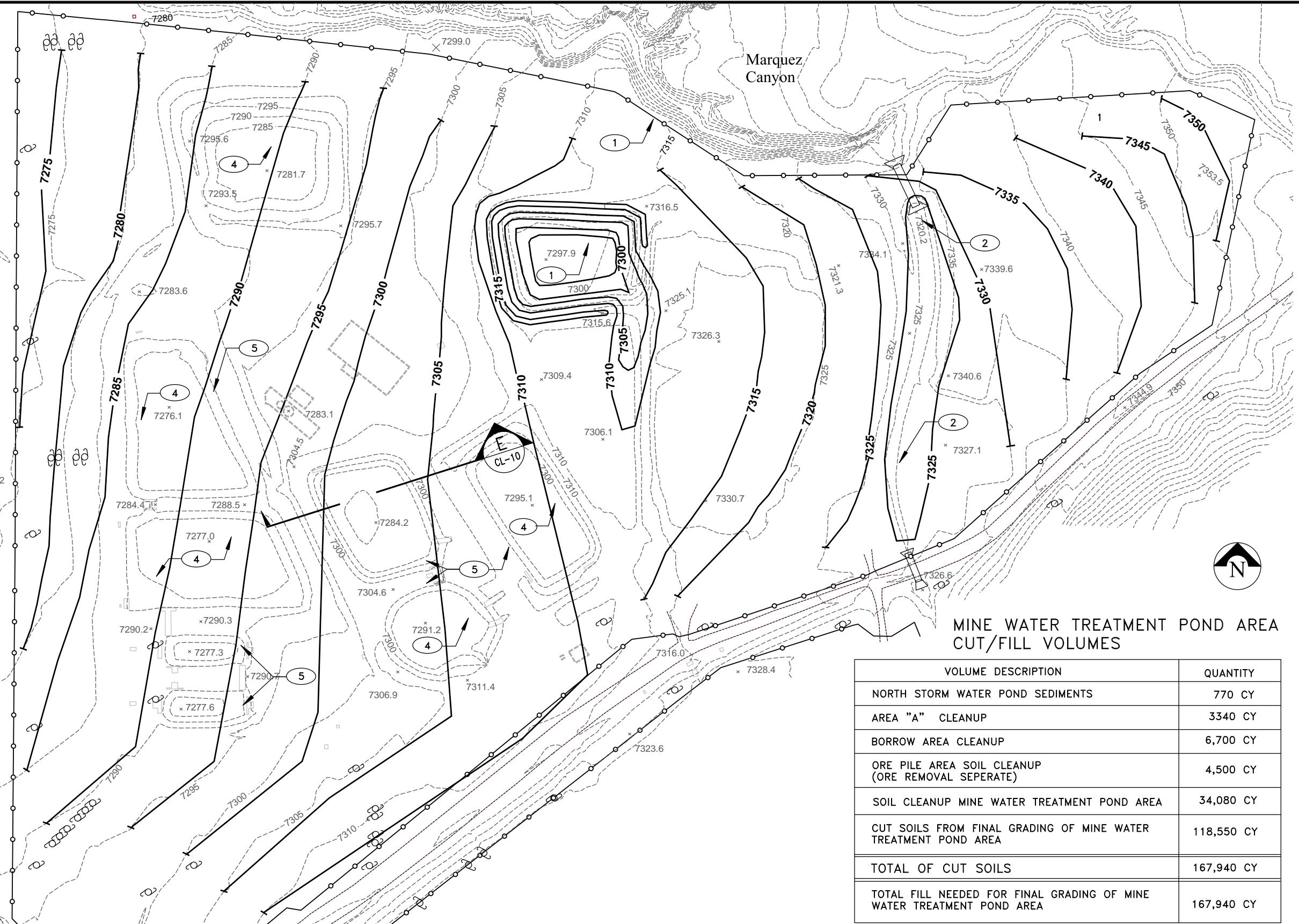
- 1
- NORTH STORM WATER POND TO REMAIN AS STOCK TANK. (PER AGREEMENT WITH LAND OWNER). REMOVE 3 FEET OF SEDIMENT. SEE DRAWING CL-02
- 2
- EXISTING STORM WATER DIVERSION CHANNEL (TO REMAIN)
- 3
- FOR CONSTRUCTION, PLACEMENT, AND MATERIAL REQUIREMENTS SEE PROJECT EARTHWORK SPECIFICATION NUMBER C.4
- 4
- EXISTING POND SEDIMENTS TO REMAIN IN PLACE AND BE COVERED BY A MINIMUM 2 FEET OF CLEAN SOIL FILL
- 5
- EXISTING POND BERM SOIL TO BE USED TO FILL IN PONDS.
- 6
- CONTAMINATED SOIL TO BE PLACED IN POND BASINS BEFORE PLACEMENT OF CLEAN SOIL COVER.

LEGEND

- 7345-----
- EXISTING CONTOUR
- * 7330.7
- EXISTING SPOT ELEVATION
- - - - -
- EXISTING STRUCTURE
- ⊙
- POWER POLE
- 7300———
- FINISH GRADE
CLOSEOUT CONTOURS




EXISTING CONTOUR LINES ARE AT 5 FOOT VERTICAL INTERVALS FOR BOTH EXISTING AND FINAL GRADES



MINE WATER TREATMENT POND AREA
CUT/FILL VOLUMES

VOLUME DESCRIPTION	QUANTITY
NORTH STORM WATER POND SEDIMENTS	770 CY
AREA "A" CLEANUP	3340 CY
BORROW AREA CLEANUP	6,700 CY
ORE PILE AREA SOIL CLEANUP (ORE REMOVAL SEPERATE)	4,500 CY
SOIL CLEANUP MINE WATER TREATMENT POND AREA	34,080 CY
CUT SOILS FROM FINAL GRADING OF MINE WATER TREATMENT POND AREA	118,550 CY
TOTAL OF CUT SOILS	167,940 CY
TOTAL FILL NEEDED FOR FINAL GRADING OF MINE WATER TREATMENT POND AREA	167,940 CY

REV	DESCRIPTION	DATE	DRAWN BY	ENGINEER	APPROVED
A	2012 UPDATE	7-23-12	EL	AK	

**RIO GRANDE RESOURCES CORPORATION**
MOUNT TAYLOR MINE - Grants, NM 87020

PROJECT TITLE:
**MT. TAYLOR MINE
CLOSEOUT/CLOSURE PLAN**

Prepared By:
Alan Kuhn Associates LLC

SIZE
B

SCALE:
1" = 200'

DWG
NO.
MT12-CL-07

SHEET TITLE:
Final Grading Plan-Mine Water
Treatment Pond And Ore Stockpile Areas

REV
A

NOTES:

- 1

EXISTING WASTE ROCK PILE CONSISTS OF WASTE ROCK FROM MINING OPERATIONS.
EXISTING SLOPE FACE = 2.7H TO 1V
- 2

EXCAVATE SHALLOW WASTE ROCK FROM EAST SIDE OF SITE AND PLACE IN WASTE
ROCK PILE FILL AREAS.
- 3

SOUTH STORM WATER RETENTION POND.
SEDIMENTS IN POND BOTTOM TO BE REMOVED AND PLACED IN
WASTE ROCK PILE FILL AREAS. SEE SHEETS CL-02 AND CL-08
- 4

DESIGN FINISH SURFACE. (SEE SHEETS CL-09 AND CL-10)
INCLUDES PLACING 2 FEET OF CLEAN SOIL COVER OVER REGRADED WASTE
ROCK PILE.
- 5

FINISH SLOPE FACE ON WEST SIDE OF WASTE ROCK PILE TO BE 5H TO 1V MAXIMUM.
- 6

PLACE SLOPE PROTECTION ON EXPOSED SLOPE FACE.
CRUSHED CONCRETE RIP RAP ON LOWER 1/3 OF SLOPE
AND EROSION CONTROL MAT ON UPPER 2/3.
- 7

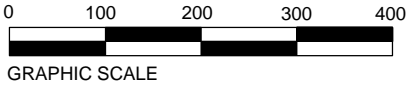
FOR CONSTRUCTION, PLACEMENT, AND MATERIAL REQUIREMENTS
SEE PROJECT EARTHWORK SPECIFICATION NUMBER C.4
- 8

THE WASTE ROCK IN THIS AREA IS FROM THE MINE SHAFT
EXCAVATION AND CONTAINS BACKGROUND RADIUM LEVELS ONLY.
THIS MATERIAL WILL BE USED FOR THE FINAL COVER
OF THE WASTE ROCK PILE.
- 9

USE CLEAN FILL SOILS FOR FILL AREAS OF 2 FEET OR LESS

WASTE ROCK PILE AREA CUT/FILL VOLUMES

VOLUME #	VOLUME DESCRIPTION	QUANTITY
VOLUME 1	SHALLOW WASTE ROCK DEPOSITS	16,000 CY
VOLUME 2	STORM WATER POND SOUTH SEDIMENTS	6,220 CY
VOLUME 3	WASTE ROCK FROM PILE RESHAPING	27,000 CY
VOLUME 4	SHAFT MUCK—USE AS CLEAN FILL FOR COVER SOILS	35,000 CY
VOLUME 5	SOIL DEPOSITS FROM CLEAN UP OF SERVICE AND SUPPORT AREA	32,000 CY
VOLUME 6	SOIL DEPOSITS FROM CLEAN UP OF COUNTY ROAD 334 ROW	4660 CY
TOTAL OF CUT SOILS		120,880 CY
VOLUME 6	TOTAL FILL NEEDED FOR FINAL GRADING OF WASTE ROCK PILE INCLUDES FINAL 2' COVER SOILS	120,880 CY




LEGEND

- 7330

EXISTING TOPOGRAPHY
- 7300

PROPOSED TOPOGRAPHY
- EXISTING FENCELINE
- EXISTING BUILDING
- ▨

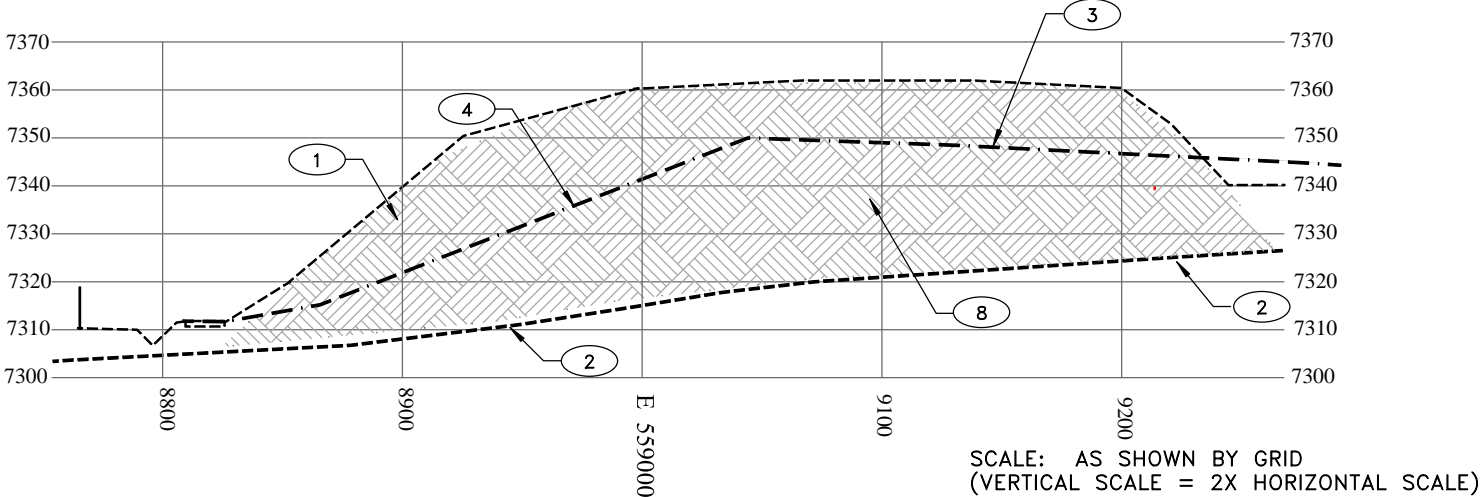
AREA TO RECEIVE COVER SOILS
- AREA OF SHALLOW WASTE ROCK REMOVAL.
- WASTE ROCK PILE EXCLUSION FENCE AND
FINAL EXTENT OF WASTE ROCK PILE

REV	DESCRIPTION	DATE	DRAWN BY	ENGINEER	APPROVED	<div>RIO GRANDE RESOURCES CORPORATION MOUNT TAYLOR MINE - Grants, NM 87020</div>	PROJECT TITLE: MT. TAYLOR MINE CLOSEOUT/CLOSURE PLAN			
A	2012 UPDATE	7-23-12	EL	AK						
						Prepared By: Alan Kuhn Associates LLC	SIZE B DWG NO. MT12-CL-08	SCALE: 1"=200'	SHEET TITLE: Final Grading Plan - Waste Rock Pile Area	REV A

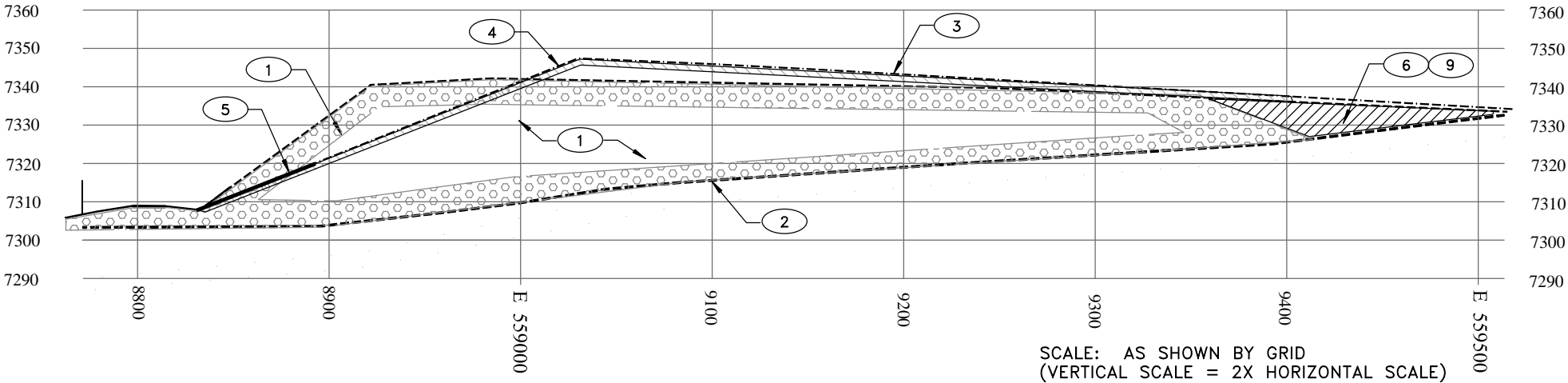
NOTES:

- 1 EXISTING WASTE ROCK PILE CONSISTS OF WASTE ROCK FROM MINING OPERATIONS. EXISTING SLOPE FACE = 2.7H TO 1V
- 2 PRE-MINE TOPOGRAPHY ESTIMATED FROM USGS TOPO MAP "SAN MATEO QUADRANT" DMA 4454 SW-SERIES, V-881 WITH TOPO FROM 1963
- 3 DESIGN FINISH SURFACE. (SEE SHEETS CL-07 AND CL-08) INCLUDES PLACING 2 FEET OF CLEAN SOIL COVER OVER REGRADED WASTE ROCK PILE.
- 4 FINISH SLOPE FACE ON WEST SIDE OF WASTE ROCK PILE TO BE 5H TO 1V MAXIMUM.
- 5 PLACE SLOPE PROTECTION ON EXPOSED SLOPE FACE. CRUSHED CONCRETE RIP RAP ON LOWER 1/3 OF SLOPE AND TOBACCO NETTING ON UPPER 2/3.
- 6 EXCAVATE SHALLOW WASTE ROCK FROM EAST SIDE OF SITE AND PLACE IN WASTE ROCK PILE FILL AREAS. RE-GRADE AREA AS SHOWN ON SHEET CL-08
- 7 FOR CONSTRUCTION, PLACEMENT, AND MATERIAL REQUIREMENTS SEE PROJECT EARTHWORK SPECIFICATION NUMBER C.4
- 8 THE WASTE ROCK IN THIS AREA IS FROM THE MINE SHAFT EXCAVATION AND CONTAINS BACKGROUND RADIUM LEVELS ONLY. THIS MATERIAL WILL BE USED FOR THE FINAL CLEAN SOIL COVER OF THE WASTE ROCK PILE.
- 9 USE CLEAN FILL SOILS FOR FILL AREAS OF 2 FEET OR LESS

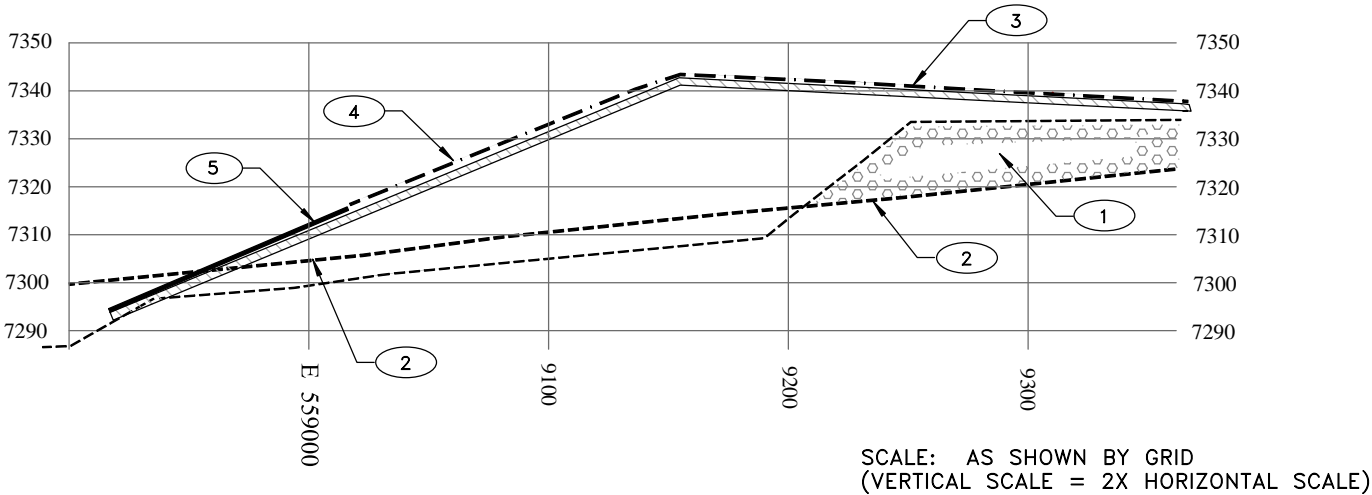
SECTION A-A'
SHEET CL-08
AT N1578400




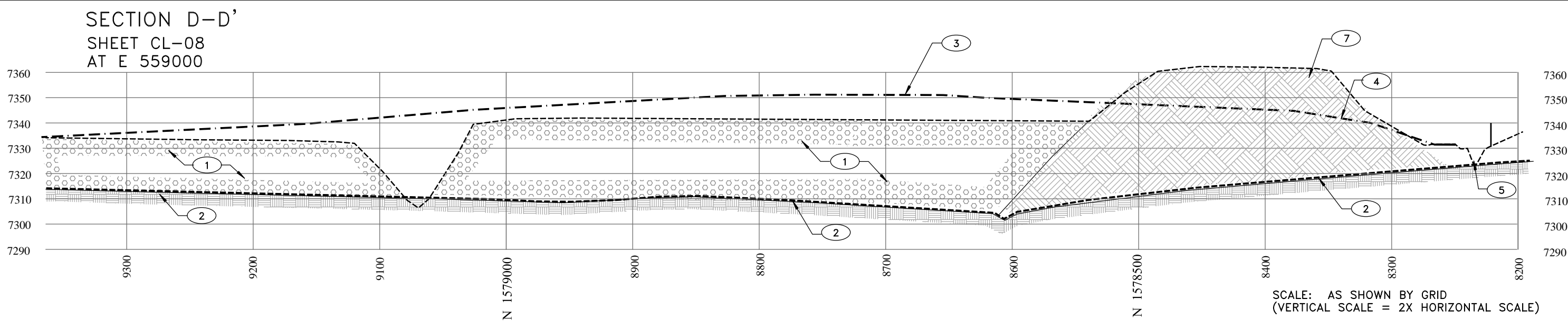
SECTION B-B'
SHEET CL-08 AT N1578700



SECTION C-C'
SHEET CL-08
AT N1579100



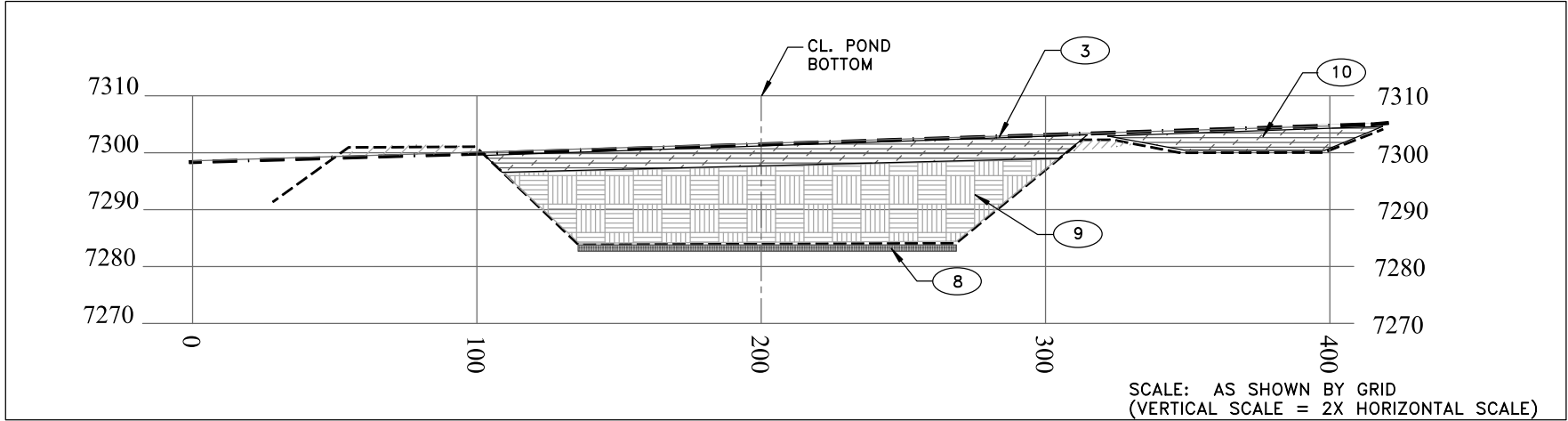
REV	DESCRIPTION	DATE	DRAWN BY	ENGINEER	APPROVED	 RIO GRANDE RESOURCES CORPORATION MOUNT TAYLOR MINE - Grants, NM 87020		PROJECT TITLE: MT. TAYLOR MINE CLOSEOUT/CLOSURE PLAN	
A	2012 UPDATE	7-23-12	EL	AK				SHEET TITLE: Sections-Waste Rock Pile Area	
						Prepared By: Alan Kuhn Associates LLC	SIZE B DWG NO. MT12-CL-09	SCALE: AS NOTED	REV A




NOTES:

- 1 EXISTING WASTE ROCK PILE CONSISTS OF WASTE ROCK FROM MINING OPERATIONS. EXISTING SLOPE FACE = 2.7H TO 1V
- 2 PRE-MINE TOPOGRAPHY ESTIMATED FROM USGS TOPO MAP "SAN MATEO QUADRANT" DMA 4454 SW-SERIES, V-881 WITH TOPO FROM 1963
- 3 DESIGN FINISH SURFACE. (SEE SHEETS CL-07 AND CL-08) INCLUDES PLACING 2 FEET OF CLEAN SOIL COVER OVER REGRADED AREAS.
- 4 FINISH SLOPE FACE ON SOUTH SIDE OF WASTE ROCK PILE TO BE 10H TO 1V MAXIMUM.
- 5 EXISTING STORM WATER DIVERSION CHANNEL (TO REMAIN)
- 6 FOR CONSTRUCTION, PLACEMENT, AND MATERIAL REQUIREMENTS SEE PROJECT EARTHWORK SPECIFICATION NUMBER C.4
- 7 THE WASTE ROCK IN THIS AREA IS FROM THE MINE SHAFT EXCAVATION AND CONTAINS BACKGROUND RADIUM LEVELS ONLY. THIS MATERIAL WILL BE USED FOR THE FINAL COVER OF THE WASTE ROCK PILE.
- 8 POND SEDIMENTS
- 9 MINE WATER TREATMENT POND FILL AREA: FOR GENERAL FILL INCLUDING POND SEDIMENTS AND CONTAMINATED SOILS.
- 10 USE CLEAN FILL SOILS FOR FINAL COVER AND FOR FILL AREAS OF 2 FEET OR LESS

SECTION E-E'
SHEET CL-07 TYPICAL MINE WATER TREATMENT POND INFILL
AT E 559000 (SECTION AT POND #3)

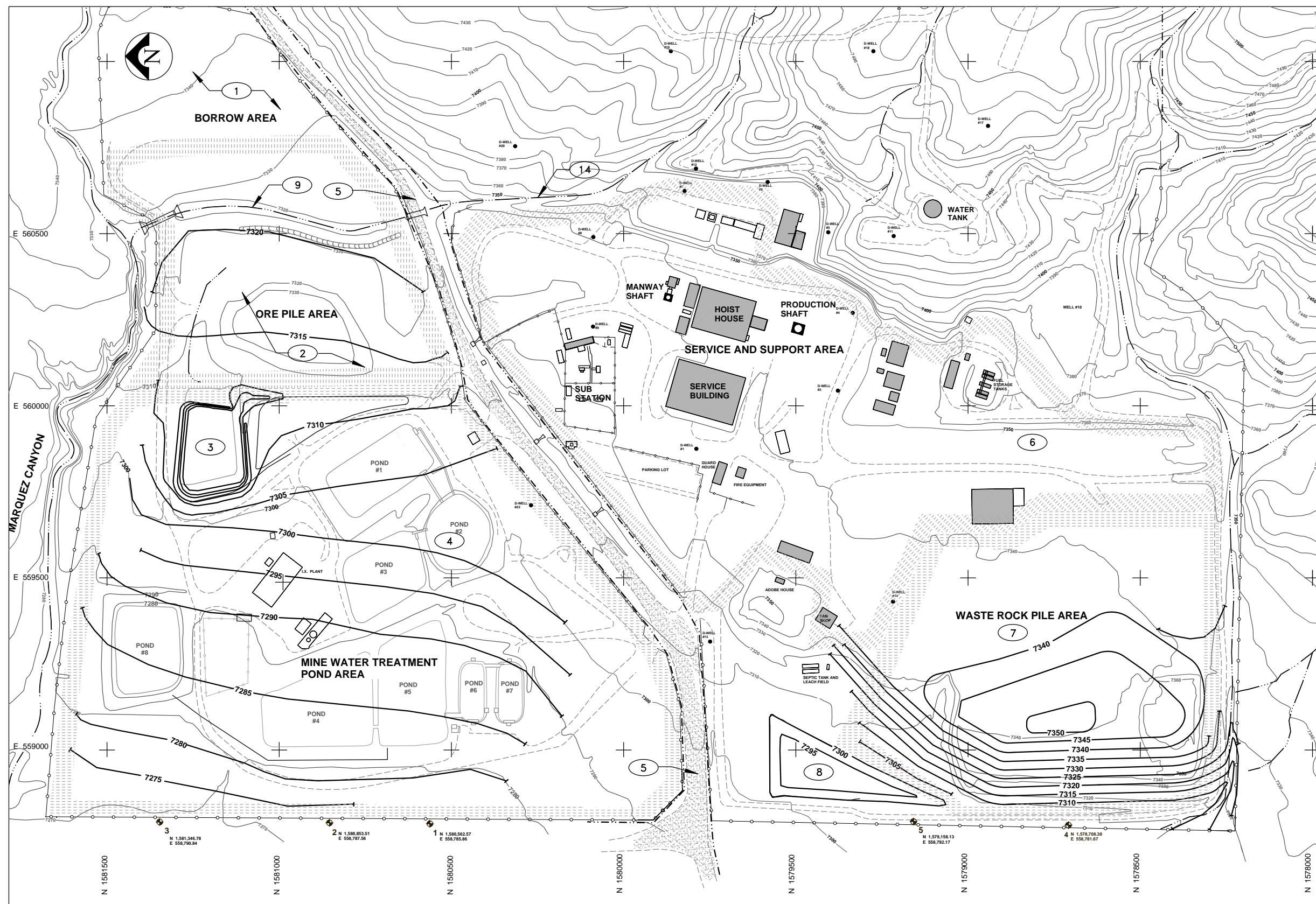



REV	DESCRIPTION	DATE	DRAWN BY	ENGINEER	APPROVED	 RIO GRANDE RESOURCES CORPORATION MOUNT TAYLOR MINE - Grants, NM 87020		PROJECT TITLE: MT. TAYLOR MINE CLOSEOUT/CLOSURE PLAN	
A	2012 UPDATE	7-23-12	EL	AK				SHEET TITLE: Sections- N/S Waste Rock Pile And Typical Mine Water Treatment Pond Infill	
						Prepared By: Alan Kuhn Associates LLC	SIZE B DWG NO. MT12-CL-10	SCALE: AS NOTED	REV A

- 1 GRADING IN BORROW AREA ONLY
IF NEEDED
- 2 EXISTING ORE PILE TO BE REMOVED
SEE SHEET CL-02
- 3 NORTH STOCK TANK.
SEDIMENTS TO BE REMOVED.
SEE SHEET CL-02
- 4 MINE WATER TREATMENT POND AREA
EXISTING MINE WATER TREATMENT
PONDS TO BE FILLED AND GRADED
AS SHOWN. SEE SHEET CL-07
- 5 NO GRADING IN COUNTY ROAD 334 ROW.
GRAVEL ROADWAY TO REMAIN AS IS
- 6 GRADING IN SERVICE AND SUPPORT
AREA ONLY AS NEEDED TO DIVERT
DRAINAGE FLOW AROUND EXISTING
REMAINING BUILDINGS
- 7 WASTE ROCK PILE AREA GRADING
SEE SHEET CL-08
- 8 SOUTH STOCK TANK
EXISTING SEDIMENTS TO BE REMOVED
SEE SHEET CL-02
- 9 STORM DIVERSION CHANEL
TO REMAIN



_____ EXISTING CONTOUR
 — 7275 — FINISH GRADE
 _____ CLOSEOUT CONTOUR
 ○ ○ ○ FENCELINE
 BUILDING TO REMAIN
 COUNTY RD 334
 (GRAVEL SURFACE)
 - - - - - COUNTY RD 334 ROW



REV	DESCRIPTION	DATE	DRAWN BY	ENGINEER	APPROVED	 RIO GRANDE RESOURCES CORPORATION <i>MOUNT TAYLOR MINE - Grants, NM 87020</i>			PROJECT TITLE: MT. TAYLOR MINE CLOSEOUT/CLOSURE PLAN		
A	2012 UPDATE	7-23-12	EL	AK		Prepared By:		SIZE B	SCALE: AS NOTED	SHEET TITLE: Final Site Grading Plan	REVISION: A
						Alan Kuhn Associates LLC		DWG NO. MT12-CL-11			