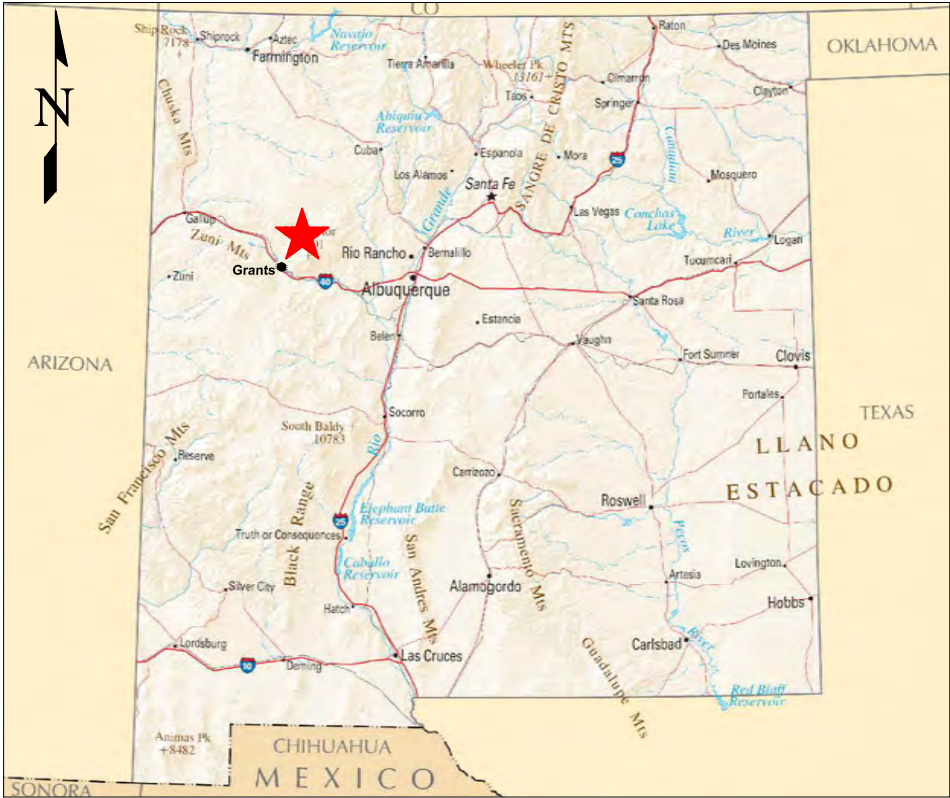


PLOTTED: 20 Jul 2010, 4:37pm, PDan

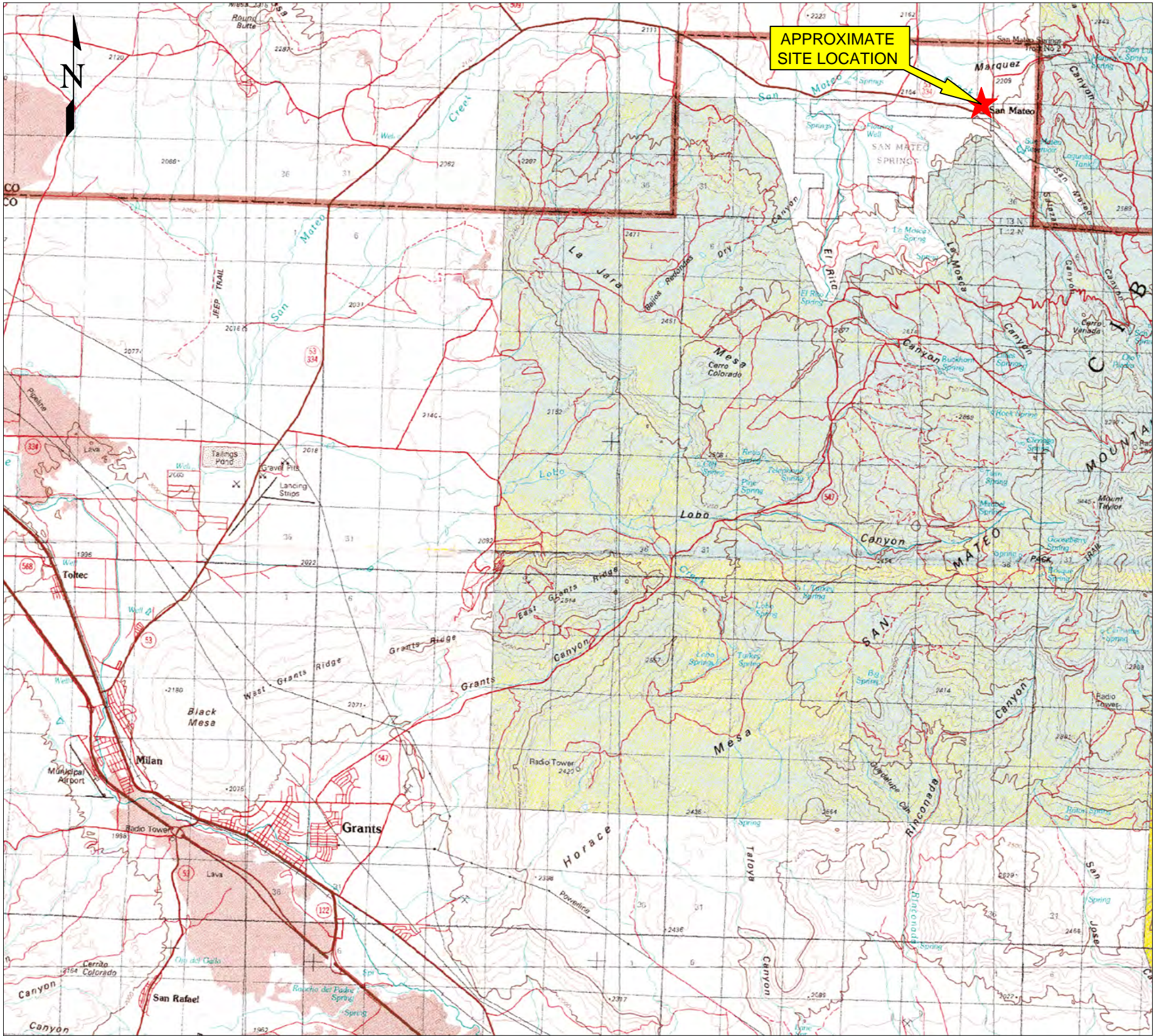
RIO GRANDE RESOURCES
 MT TAYLOR MINE STANDBY STATUS
 CIBOLA COUNTY, NEW MEXICO



SOURCE: Map provided by national atlas.com. NTS

LEGEND

★ = Site Location



SOURCE: Sar.lnal.gov.



SCALE: 1 inch = 2 miles



PROJECT NO.	96450
DRAWN:	JULY 2010
DRAWN BY:	PD
CHECKED BY:	BE
FILE NAME:	96450_01_SL.dwg

SITE LOCATION MAP	
RIO GRANDE RESOURCES MT TAYLOR MINE STANDBY STATUS CIBOLA COUNTY, NEW MEXICO	
ORIGINATOR:	B. EVERETT
DRAWING CATEGORY:	1
APPROVED BY:	

FIGURE

1

The information included on this graphic representation has been compiled from a variety of sources and is subject to change without notice. Kleinfelder makes no representations or warranties, express or implied, as to accuracy, completeness, timeliness, or rights to the use of such information. This document is not intended for use as a land survey product nor is it designed or intended as a construction design document. The use or misuse of the information contained on this graphic representation is at the sole risk of the party using or misusing the information.

ATTACHED IMAGES: Images: f35107a1.tif Images: New Mexico State Map.bmp
 ATTACHED XREFS: ALBUQUERQUE, NM
 CAD FILE: C:\DOCUMENTS-1\PDan\LOCALS-1\TempAcPublish_31000_LAYOUT: Layout1