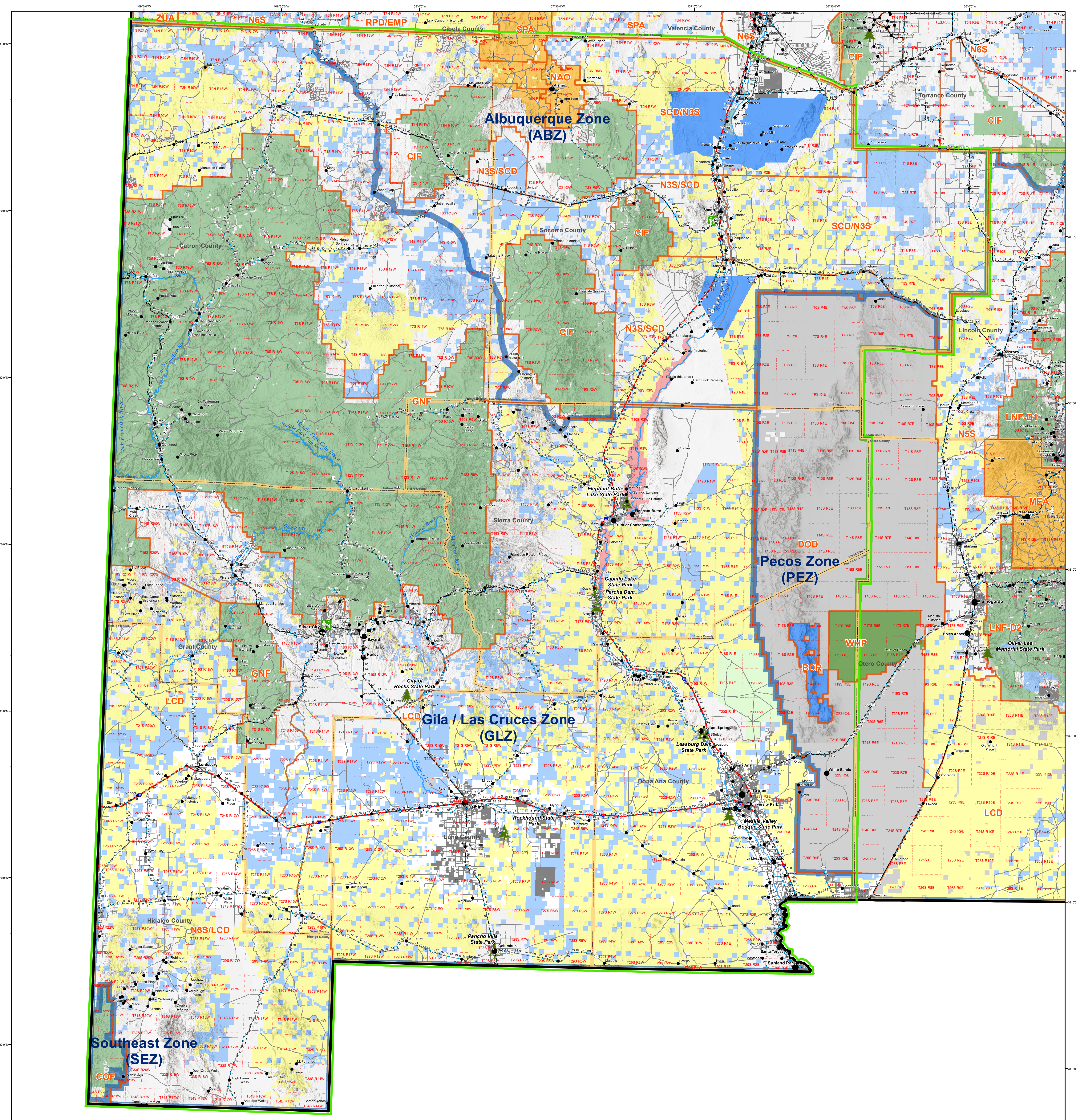


# SOCORRO DISTRICT INITIAL ATTACK ZONES



NEW MEXICO  
e m n r d  
Energy, Minerals and Natural Resources Department

N  
W E  
S

0 5 10 20 30 40 50 Miles  
1:480,409  
1 inch = 7.58 miles

**Initial Attack Zones**

- Initial Attack Zones
- Dispatch Zones
- County Boundaries
- Bureau of Land Management
- Bureau of Reclamation
- Department of Agriculture
- Department of Defense
- Department of Energy
- National Park Service
- Private Land
- State Game & Fish
- State Land
- State Parks
- Tribal
- US Fish & Wildlife Service
- US Forest Service

**BAP** - Bandelier Natl. Monument  
**BDR** - Bosque del Apache NWR  
**BTR** - Bitter Roots NWR  
**CAD** - BLM Carlsbad Field Office  
**CAF** - Carson NF  
**CCP** - Carlsbad Caverns Natl. Park  
**CHF** - Chiricahua Natl. Monument  
**CIF** - Cibola NF  
**COF** - Coronado NF  
**DOD** - Department of Defense  
**EMP** - El Malpais Natl. Monument  
**FAD** - BLM Farmington Field Office  
**GNF** - Gila NF  
**JIA** - BIA Jicarilla Agency  
**LAA** - BIA Laguna Agency  
**LAFD** - Los Alamos Fire Department  
**LCD** - BLM Las Cruces Field Office  
**LNF - D1** - Lincoln NF - Smokey Bear Ranger District  
**LNF - D2** - Lincoln NF - Cloudcroft Ranger District  
**LNF - D3** - Lincoln NF - Guadalupe Ranger District

**MEA** - BIA Mescalero Agency  
**N15** - NM State Chama District  
**N25** - NM State Cimarron District  
**N35** - NM State Socorro District  
**N45** - NM State Las Vegas District  
**N55** - NM State Capitan District  
**N65** - NM State Bernalillo District  
**NAO** - BIA Navajo Agency  
**NPA** - BIA Northern Pueblos Agency  
**RNA** - BIA Ramah Navajo Agency  
**ROD** - BLM Roswell Field Office  
**RPD** - Rio Puerco District  
**SCD** - BLM Socorro Field Office  
**SER** - Sevilleta NWR  
**SNF** - Santa Fe NF  
**SPA** - BIA Southern Pueblos  
**TAD** - BLM Taos Field Office  
**USAF** - US Air Force  
**WHP** - White Sands Natl. Monument  
**ZUA** - BIA Zuni Agency