

FAWRA Advisory Board

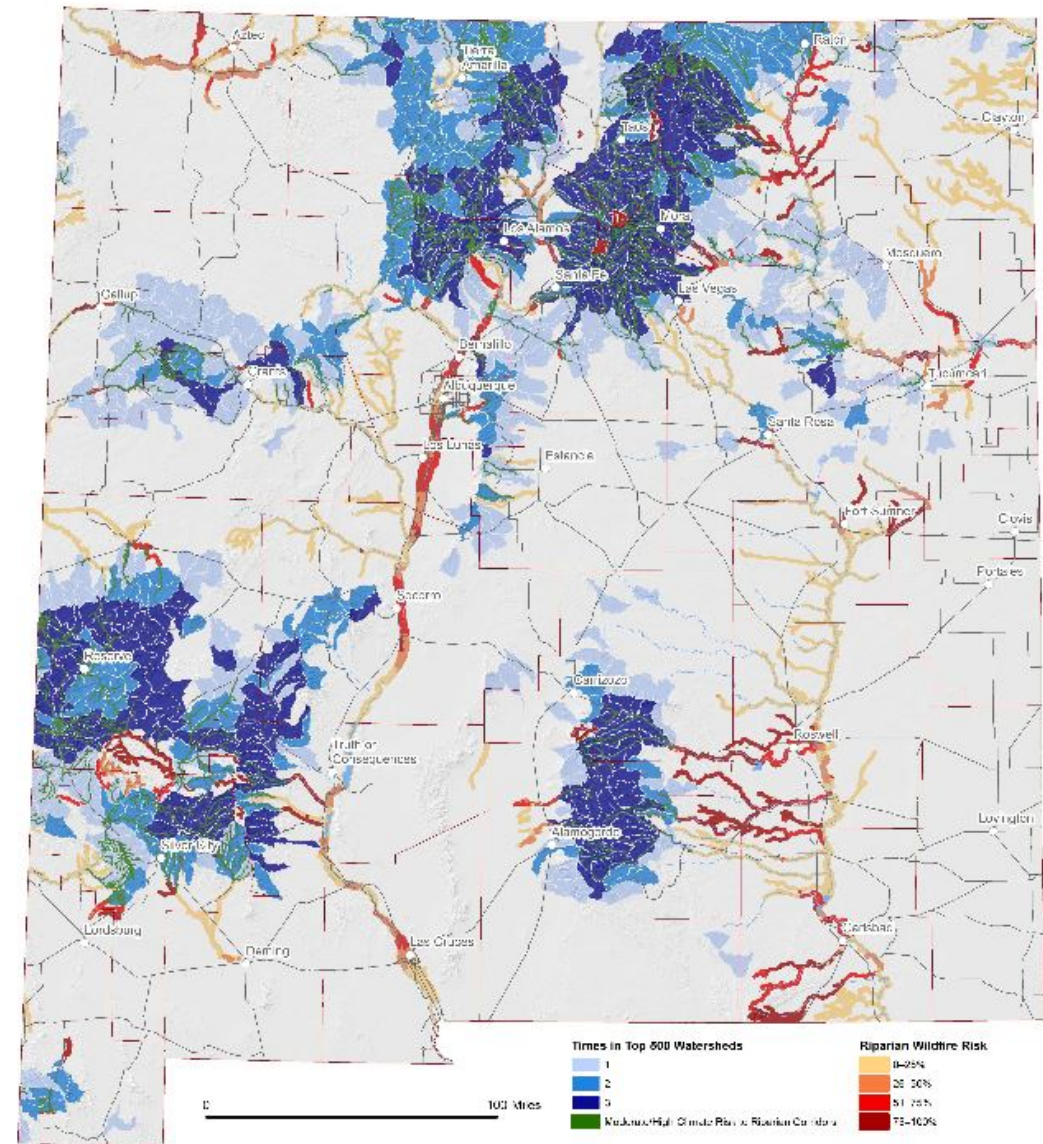
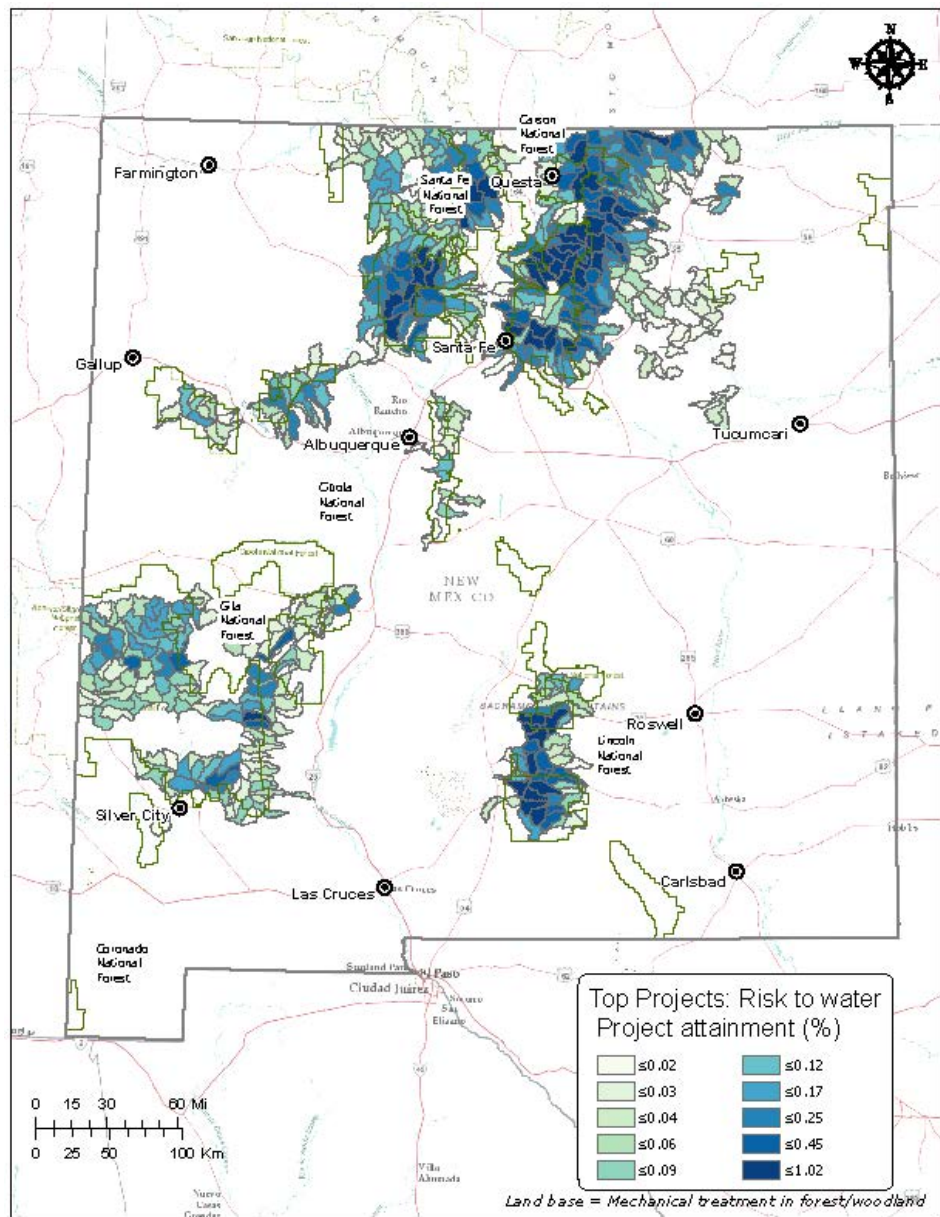
October 6, 2020



State Forester's Update

- Forest Action Plan
- Priority Maps
- Prescribed Fire





All Lands Shared Stewardship Priorities – Top 500

2020 NM Forest Action Plan



NEW MEXICO



Energy, Minerals and Natural Resources Department

Strategy 1: Restore Forests and Watersheds

Addresses the legacy of fire exclusion and current land conditions to mitigate catastrophic wildfires burning much hotter than previously experienced with forest management treatments



Strategy 2: Fire Management

restores the ecological role of fire to foster resilient landscapes and watershed health; sustains wildfire response on state and private lands; supports regional, state, and national wildfire response on all jurisdictions; and fosters collaboration of post-fire response after high severity wildfire.



Strategy 3: Private Lands Stewardship

Provides strategies to improve and support private land stewardship and provide services to assist landowners, including both government agencies and non-governmental organizations (NGOs), with tools for resource stewardship that contributes substantial public benefits



Strategy 4: Utility Rights of Way

Addresses the risk of wildfire ignition and threat of damage to utility infrastructure by increasing vegetation management along right of ways



Strategy 5: Rare Plants

Are addressed by incorporating key actions from the Division's Rare Plant Conservation Strategy to ensure protection of New Mexico's extraordinary plant diversity



Strategy 6: Reforestation

Addresses the need to reforest burned areas and bridge the state's reforestation backlog, and to do so with seedlings that will mature into trees capable of withstanding the anticipated growing conditions of the future



Strategy 7: Urban and Community Forestry

Addresses the need for trees where 80% of New Mexicans live and obtain essential benefits such as cooling shade, clean air and stormwater runoff reduction



Strategy 8: Restoration Economy

is the driving force behind forest management activities and addresses the need to invest in workforce development for all of these strategies, and to rebuild and retool forest industry and wood processing to capture the by-products of restoration and manage forests for resilience in changing climate conditions



Strategy 9: Land Conservation

Provides a statewide blueprint for land conservation to guide the investment of state and federal funds to provide tax credits for conservation easements or purchase land or easements and increase collaboration among local government agencies, non-governmental organizations, and land trusts



Strategy 10: Outdoor Recreation

Is positioned to become a major economic driver in the state and the strategy identifies the importance of forest management to provide beautiful and safe places for recreation



Project Ranking by Advisory Board and Outline for Progress Updates

Project Name	Ranking Based on Average Score	Funding Request
Zuni Landscape Restoration	1	\$300,000
Turkey Mountain Watershed Phase 2	2	\$300,000
Zuni Landscape Restoration Phase 2	3	\$200,000
Upper Coyote Creek – Elk Ridge 2	4	\$400,000
Rio Chama Watershed Restoration Planning	5	\$158,150
Cebolla Nutrias Watershed	6	\$250,000
Rio Grande ABQ Bosque Restoration	7	\$135,000
Sandia Pueblo Bosque Restoration	8	\$75,000
NMDGF Socorro Escondido WMA	9	\$204,969
SOBTF Conceptual Restoration Plan	10	\$158,895
Chupadera Mesa	11	\$270,000

Zuni Landscape Restoration

Before thinning



Zuni Landscape Restoration

Before thinning



Zuni Landscape Restoration

Before thinning on left, during thinning on
right



Zuni Landscape Restoration

Skidding over frozen ground



Zuni Landscape Restoration

After thinning in foreground and before
thinning in distance



Zuni Landscape Restoration

After thinning



Zuni Landscape Restoration

After thinning



Zuni Landscape Restoration

During thinning with log piles



Zuni Landscape Restoration

Rubber-tired skidder for low impact and log
deck along the road



Zuni Landscape Restoration

After thinning



Turkey Mountain Watershed

After thinning in foreground and before
thinning in the distance



Turkey Mountain Watershed

Fire doing its work



Turkey Mountain Watershed

Self-loading log truck



Turkey Mountain Watershed

Self-loading log truck and the log deck



Turkey Mountain Watershed

End-result of restoration work



Project Ranking by Advisory Board and Outline for Progress Updates

Project Name	Ranking Based on Average Score	Funding Request
Zuni Landscape Restoration	1	\$300,000
Turkey Mountain Watershed Phase 2	2	\$300,000
Zuni Landscape Restoration Phase 2	3	\$200,000
Upper Coyote Creek – Elk Ridge 2	4	\$400,000
Rio Chama Watershed Restoration Planning	5	\$158,150
Cebolla Nutrias Watershed	6	\$250,000
Rio Grande ABQ Bosque Restoration	7	\$135,000
Sandia Pueblo Bosque Restoration	8	\$75,000
NMDGF Socorro Escondido WMA	9	\$204,969
SOBTF Conceptual Restoration Plan	10	\$158,895
Chupadera Mesa	11	\$270,000

Still good with the FY22 timeline?

September 10, 2020 – FY22 draft guidelines sent to FAWRA board

September 17, 2020 – Field trip to Zuni Mt - postponed

October 6, 2020 – FAWRA meeting /w vote on FY22 guidelines

Oct 13, 2020 – FY22 guidelines released /w call for nominations

March 1, 2021 – Final date for project submittal

April 1, 2021 – Final date for project revision

April 10, 2021 – Project packets delivered to FAWRA board

April 16, 2021 – FAWRA board meeting with presentations

May 12, 2021 – FAWRA board project scoring deadline

May 14, 2021 – FAWRA board meeting for project ranking

July 1, 2021 – FAWRA \$ transfer requested from OSE to EMNRD

FY 22 Guidelines

- Objectives
- Leverage
- Large Scale
- Private Lands
- NEPA
- Eligibility
- Evaluation Criteria
- Project Submission Process
- Project Review Process
- Timeline for Review Process
- Implementation Process
- Reporting



Field Trip Rescheduling

Other Business

Recap Next Steps

