

State of New Mexico
Energy, Minerals and Natural Resources Department

Susana Martinez
Governor

David Martin
Cabinet Secretary-Designate

Brett F. Woods, Ph.D.
Deputy Cabinet Secretary

Tommy Mutz, Division Director
State Parks Division



News Release

FOR IMMEDIATE RELEASE
December 23, 2013

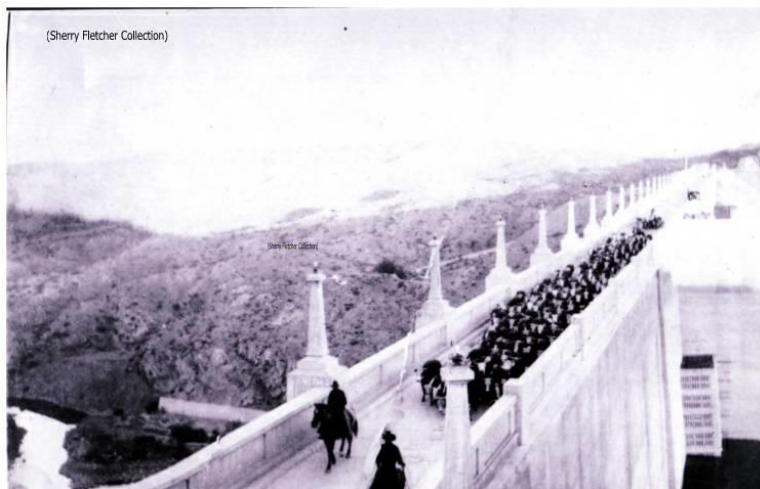
Contact: Beth Wojahn 505-476-3226; E-mail: beth.wojahn@state.nm.us
Jim Winchester 505-231-8800; E-mail: jim.winchester@state.nm.us

First Day Hike Across Historic Elephant Butte Dam

Truth or Consequences, NM – Kick off the New Year by stepping outdoors and participating in a First Day Hike across Elephant Butte Dam on January 1, 2014, from noon – 3 p.m. For one day only, the Bureau of Reclamation and New Mexico State Parks have issued a special permit to allow the Dam to be open to foot traffic.

“The walk across Elephant Butte Dam is a once in a lifetime event for many citizens,” State Parks Director Tommy Mutz said. “We invite everyone to participate in this historic hiking event.”

Elephant Butte Lake State Park is one of nine New Mexico State Parks participating in this national event. The historic Elephant Butte Dam Hike begins at the overlook on SR 177 at noon and is about three quarters of a mile across the dam. This is a moderate-level hike with a presentation on the history of the dam. Parking is also available at the overlooking the dam on Highway 177. Additional parking is available at the Dam Site Recreation Area.



The first walk across the dam: a cattle drive from Monticello to Engle, New Mexico via Elephant Butte Dam in 1916.

Construction of the Elephant Butte Dam (between 1911-1916) was a significant event in the history of Sierra County. The dam provides irrigation, making agriculture a profitable venture in southern New Mexico, Texas and Mexico.

Visitors may also take a nature hike on the Luchini Trail at the park from noon-3 p.m. This hike begins at the main park office and is about half a mile long. A presentation on local plants and wildlife is scheduled.

Conditions are Right for Adventure at New Mexico State Parks!

###

The Energy, Minerals and Natural Resources Department provides resource protection and renewable energy resource development services to the public and other state agencies.

1220 South St. Francis Drive • Santa Fe, New Mexico 87505
Phone (505) 476-3355 • Fax (505) 476-3361 • www.nmparks.com