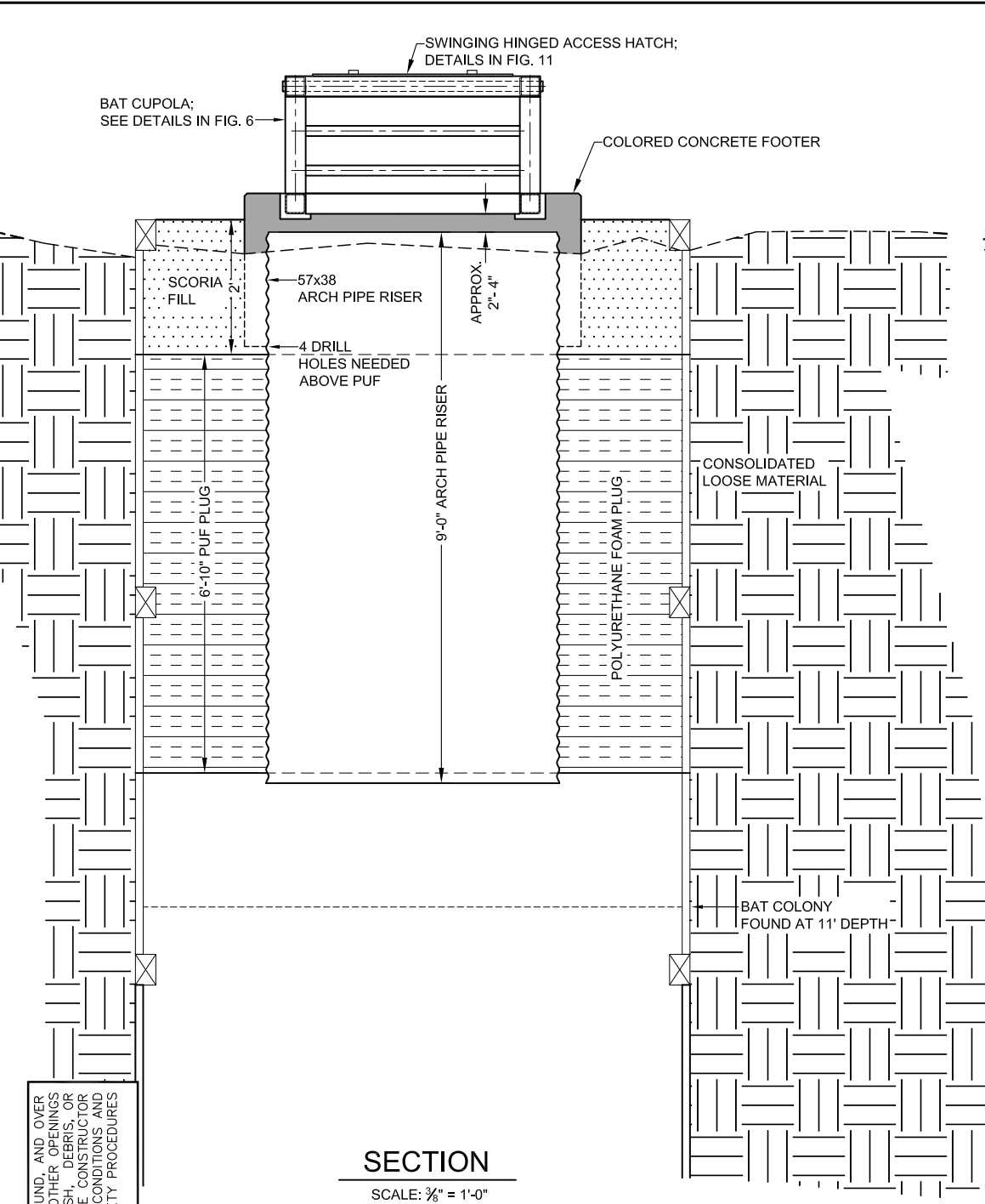
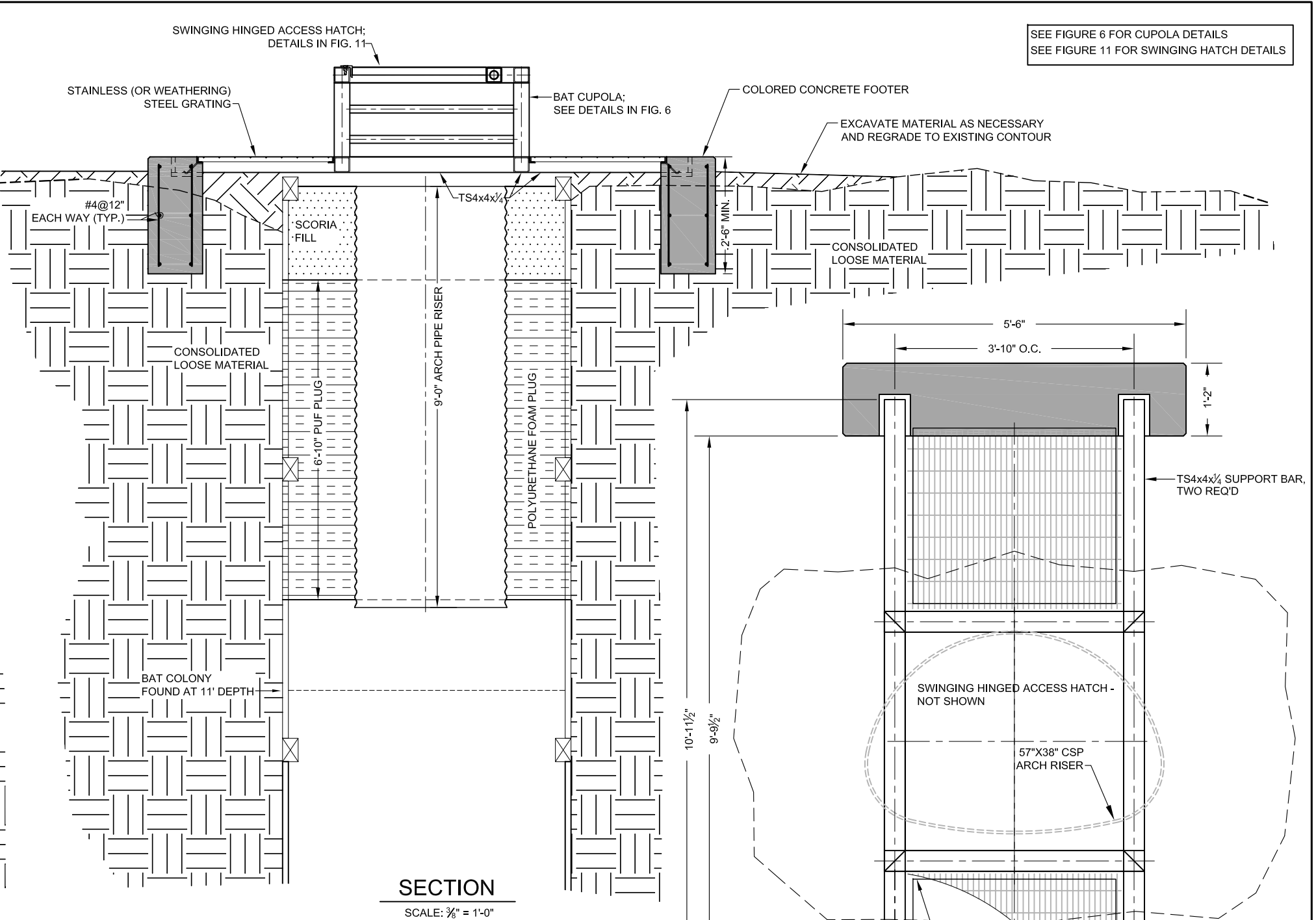


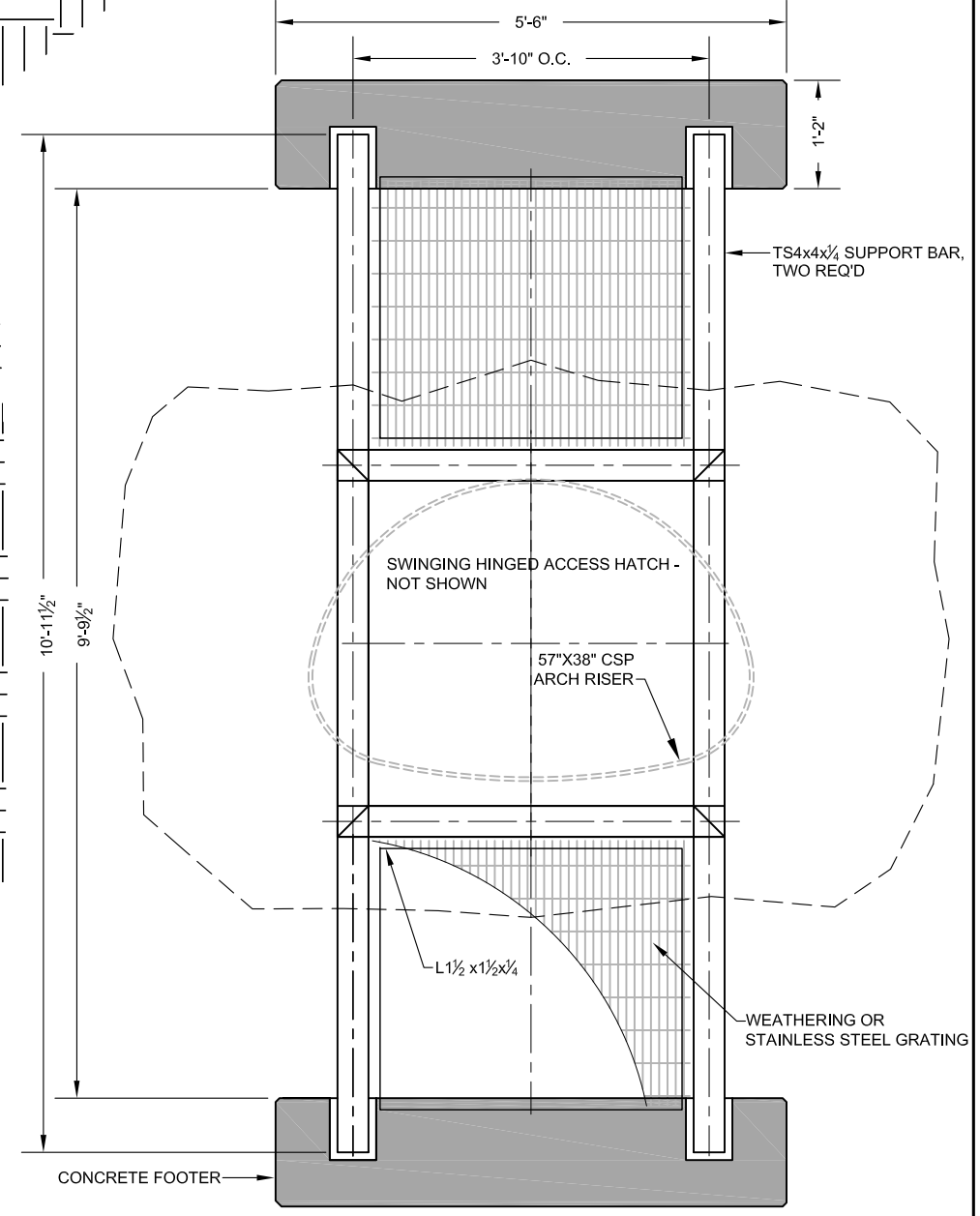
SEE FIGURE 6 FOR CUPOLA DETAILS
SEE FIGURE 11 FOR SWINGING HATCH DETAILS



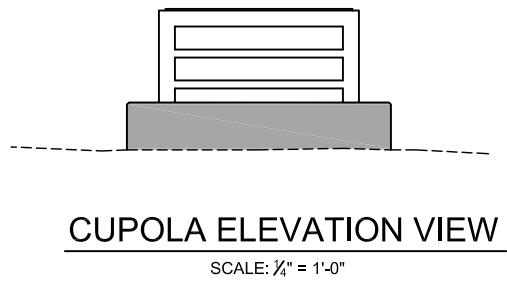
SECTION
SCALE: 3/8" = 1'-0"



SECTION
SCALE: 3/8" = 1'-0"



PLAN VIEW
SCALE: 1/2" = 1'-0"



CUPOLA ELEVATION VIEW
SCALE: 1/4" = 1'-0"

CAUTION - THIS PROJECT REQUIRES CONSTRUCTION WORK IN, AROUND, AND OVER HAZARDOUS AND UNPROTECTED MINE SHAFTS, STOPS, ADITS, AND OTHER OPENINGS WHICH MAY BE OPEN TO THE SURFACE OR HIDDEN FROM VIEW BY TRASH, DEBRIS, OR THIN AND UNSTABLE LAYERS OF SURFACE MATERIALS OR ROCK. THE CONSTRUCTOR SHALL BE RESPONSIBLE FOR THOROUGHLY INVESTIGATING THE SITE CONDITIONS AND SCHEDULING EQUIPMENT, PERSONNEL, AND SAFETY PROCEDURES TO PREVENT ACCIDENTS AND INJURIES.

GENERAL NOTES:

1. THIS DRAWING SHOWS THE GENERAL SHAPES AND APPROXIMATE SIZES OF THE MINE OPENINGS AND THE CORRESPONDING LAYOUTS OF THE CUPOLA AND ARCH RISER PIPE. THE DRAWING SHALL BE USED AS A GUIDE FOR FIELD LAYOUT. DETERMINE THE ACTUAL LAYOUTS AND DIMENSIONS OF THE CLOSURES IN THE FIELD PRIOR TO FABRICATION.
2. TUBULAR STEEL, STEEL SHAPES, PLATES, AND BARS SHALL BE WEATHERING STEEL AS SPECIFIED. WELD ALL JOINTS. TOLERANCES ON THE CENTER-TO-CENTER DIMENSIONS BETWEEN CROSSBARS IS $\pm 1/16$ INCH.
3. CONSTRUCT AND WELD THE CLOSURE TO ELIMINATE SURFACES ON WHICH MOISTURE ACCUMULATION CAN OCCUR. JOINTS SHALL BE TIGHT SO THAT MOISTURE CANNOT ENTER BETWEEN THE PLYS OF MATERIAL.
4. COVER ALL POLYURETHANE FOAM SURFACES COMPLETELY WITHIN ONE HOUR OF INSTALLATION TO PREVENT UV DEGRADATION.
5. MINIMIZE THE AMOUNT OF ROCK AND OTHER DEBRIS THAT FALL INTO THE MINE OPENINGS DURING CONSTRUCTION. PULL LOOSE MATERIAL UP AND OUT ONTO THE WASTE PILE.
6. SLOPE THE FINISH GRADE TO DRAIN STORM WATER DOWNHILL AND AWAY FROM THE COLLAR.
7. SEE SPECIFICATION 05530 FOR STEEL GRATING DETAILS. ORIENT GRATING BEARING BARS TO SHORTEST DISTANCE BETWEEN SUPPORTS.
8. DRILL FOUR 1/4"Ø HOLES THROUGH THE CSPA JUST ABOVE THE PUF LEVEL TO FACILITATE DRAINAGE. FULLY PAINT THE DRILLED AREAS WITH THE NATINA STAIN USED ON THE HORIZONTAL CULVERTS AT THE OTHER PROJECT LOCATIONS. NO SHARP EDGES SHALL BE LEFT IN PLACE.
9. PLACE SURVEY MARKER, PROVIDED BY THE PROJECT MANAGER, INTO THE CONCRETE FOOTING.

ABANDONED MINE LAND PROGRAM		
MINING AND MINERALS DIVISION		
NEW MEXICO ENERGY, MINERALS, AND NATURAL RESOURCES DEPARTMENT		
SCALE: AS SHOWN	FEATURE 6-37	DRAWN BY: MWT
DATE:		REVISED BY:
CUPOLA CLOSURE		
FILE:	CERRILLOS CENTRAL/BONANZA CREEK MINE SAFEGUARD PROJECT PH. III	FIGURE: 5