

**GENERAL NOTES:**

1. THE SHAPE AND DIMENSIONS SHOWN FOR THE EXISTING ADIT OPENINGS ARE APPROXIMATE. FIELD VERIFY ALL DIMENSIONS BEFORE FABRICATION.

2. STEEL PLATES AND SHAPES SHALL BE WEATHERING STEEL. WELD ALL JOINTS. CONSTRUCT THE BAT GATE TO ELIMINATE SURFACES ON WHICH MOISTURE OR DEBRIS CAN BE TRAPPED. ALL TUBULAR MEMBERS SHALL BE HERMETICALLY SEALED TO PREVENT THE INCURSION OF MOISTURE, EXCEPT AS OTHERWISE NOTED. ROUND OR CHAMFER ALL EXPOSED SHARP CORNERS AND EDGES.

3. DOUBLE-NUT ALL BOLTS.

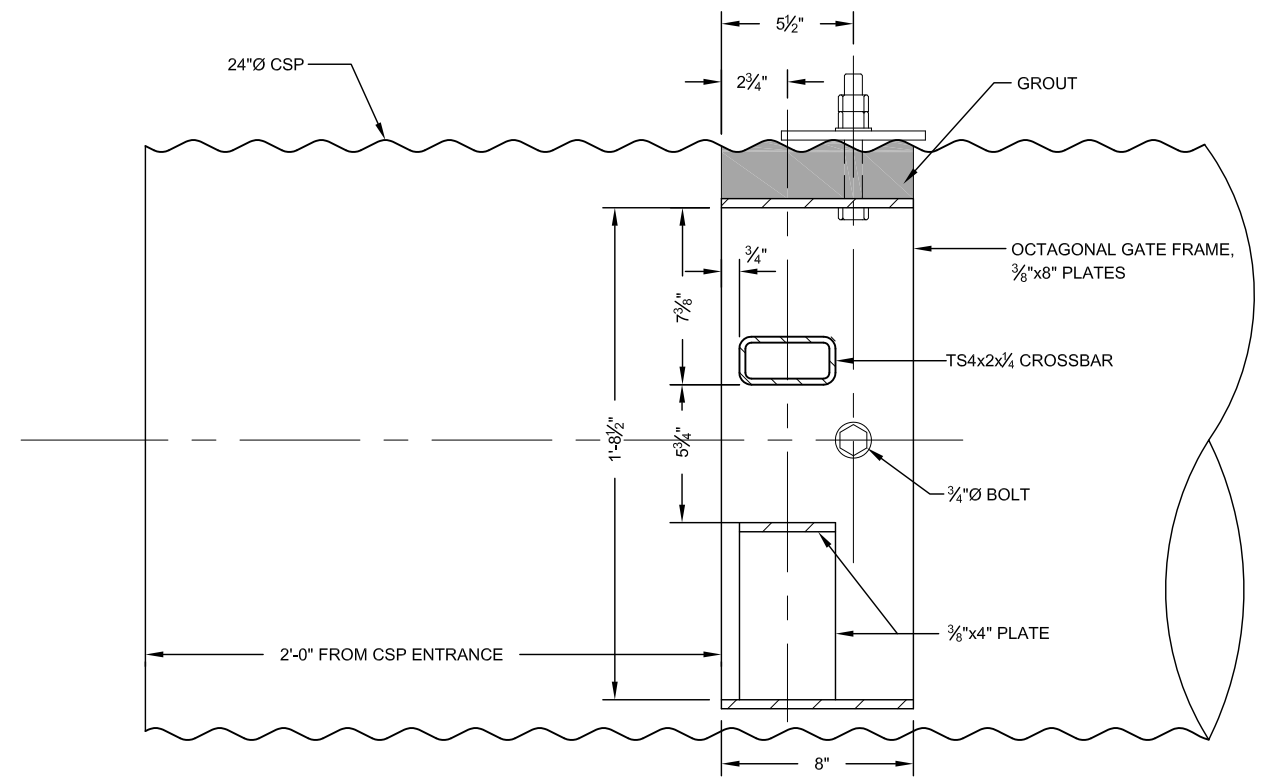
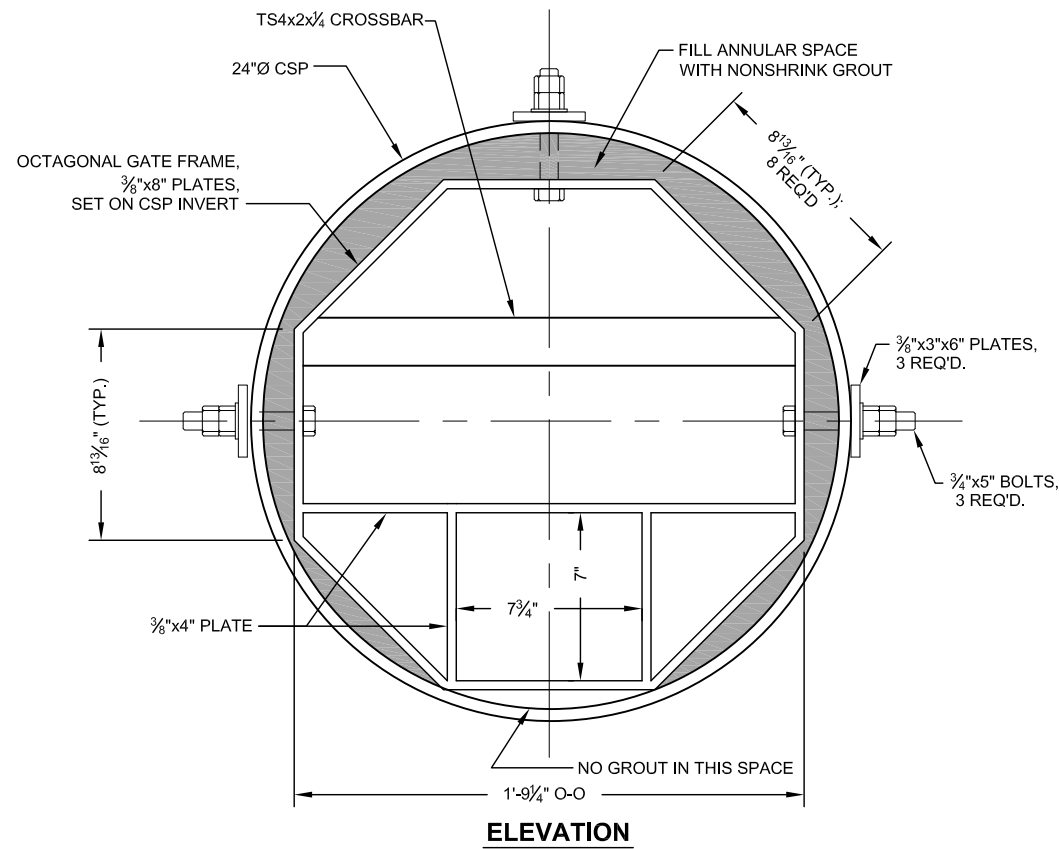
4. THE CONTRACTOR HAS THE OPTION OF USING 8" STEEL PLATE WHERE 4" STEEL PLATE IS SHOWN IN THE DRAWING.

5. VERIFY THAT THE OPENINGS OF THE CSP ARE NOT OBSTRUCTED BY FILL OR ROCK.

6. THE FINISH GRADE ON THE OUTSIDE OF THE CULVERT SHALL HAVE POSITIVE DRAINAGE AWAY FROM THE STRUCTURE.

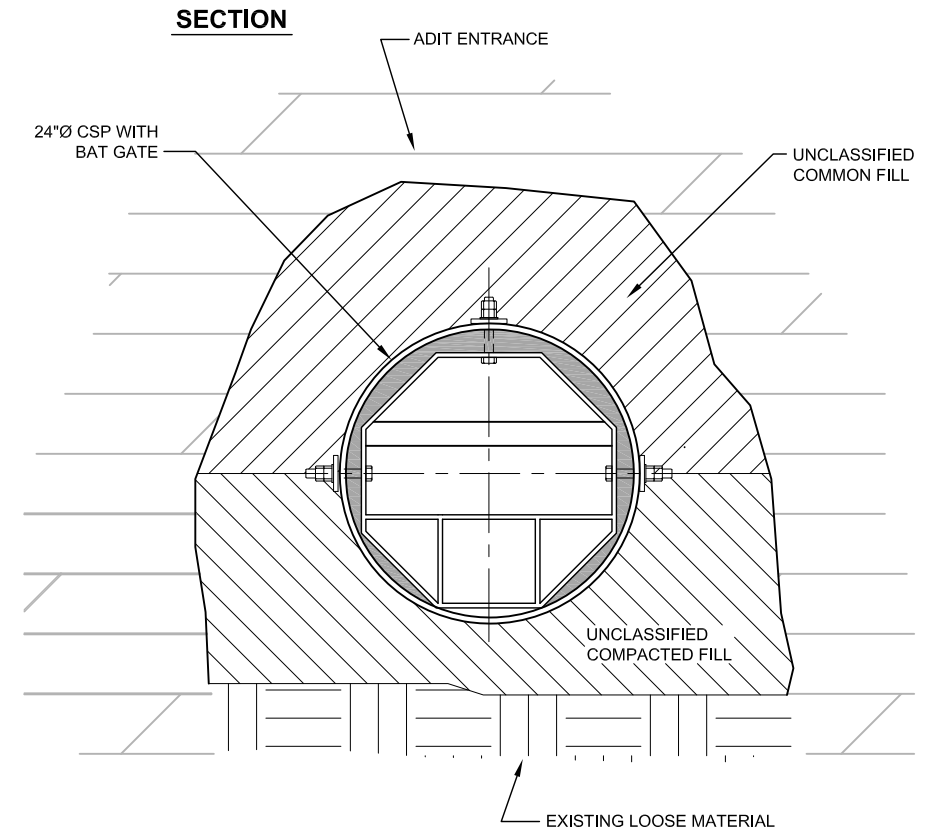
7. PAINT VISIBLE PORTIONS OF CSP (INSIDE AND OUTSIDE) WITH NATINA STAIN OR APPROVED EQUIVALENT FOR CAMOUFLAGE. COLOR SHOULD BLEND IN WITH THE COVER ROCK AS DIRECTED BY THE PROJECT MANAGER.

8. PLACE A SURVEY MARKER IN COMPETENT ROCK AS SPECIFIED AND AS DIRECTED BY THE PROJECT MANAGER.



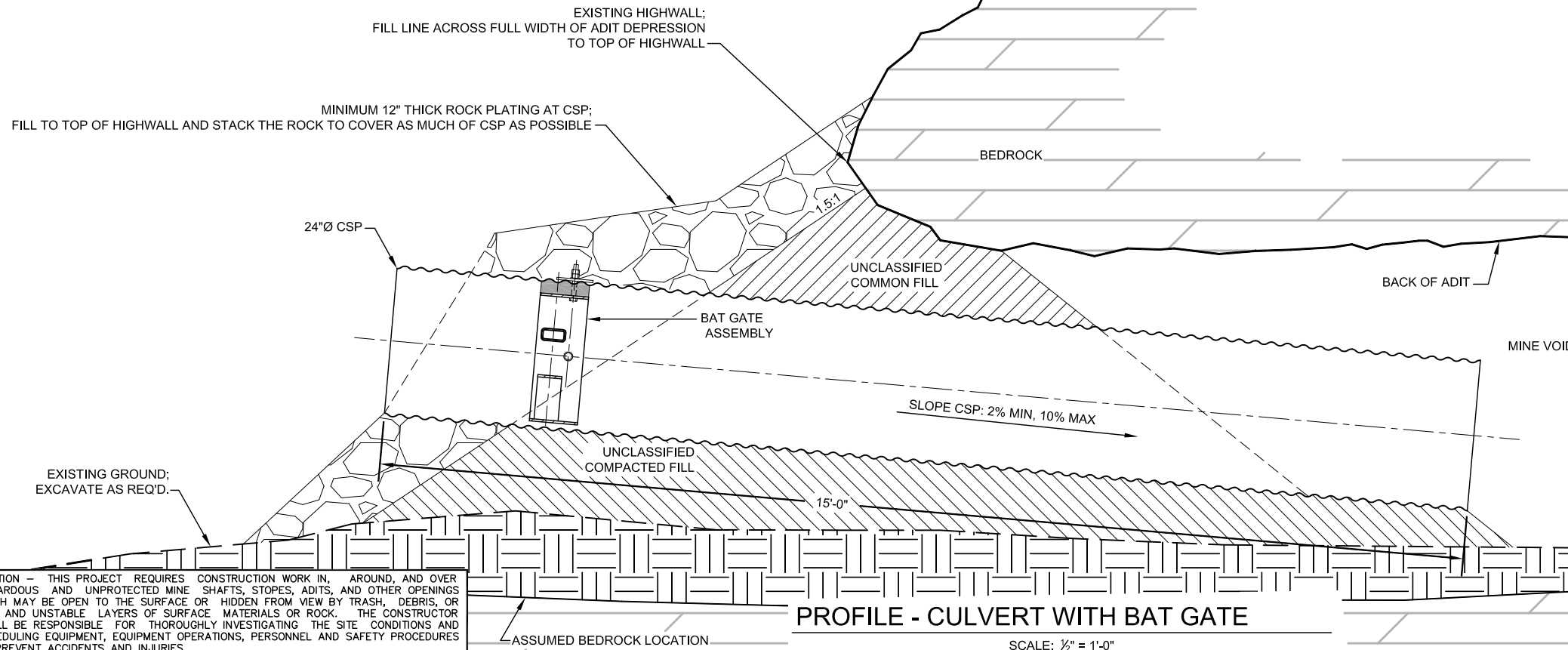
**BAT GATE ASSEMBLY**

SCALE: 1/2" = 1'-0"



**FRONT SECTION VIEW**

SCALE: 3/4" = 1'-0"



**PROFILE - CULVERT WITH BAT GATE**

SCALE: 1/2" = 1'-0"

CAUTION - THIS PROJECT REQUIRES CONSTRUCTION WORK IN, AROUND, AND OVER HAZARDOUS AND UNPROTECTED MINE SHAFTS, STOPS, ADITS, AND OTHER OPENINGS WHICH MAY BE OPEN TO THE SURFACE OR HIDDEN FROM VIEW BY TRASH, DEBRIS, OR THIN AND UNSTABLE LAYERS OF SURFACE MATERIALS OR ROCK. THE CONSTRUCTOR SHALL BE RESPONSIBLE FOR THOROUGHLY INVESTIGATING THE SITE CONDITIONS AND SCHEDULING EQUIPMENT, EQUIPMENT OPERATIONS, PERSONNEL AND SAFETY PROCEDURES TO PREVENT ACCIDENTS AND INJURIES.

<b>ABANDONED MINE LAND PROGRAM</b> MINING AND MINERALS DIVISION NEW MEXICO ENERGY, MINERALS, AND NATURAL RESOURCES DEPARTMENT			
SCALE: AS SHOWN	DATE:	FEATURE 6-92	
CULVERT WITH BAT GATE			REVISED BY:
FILE:	CERRILLOS CENT/BONANZA CREEK MINE SAFEGUARD PROJECT - PH III	FIGURE: 7	