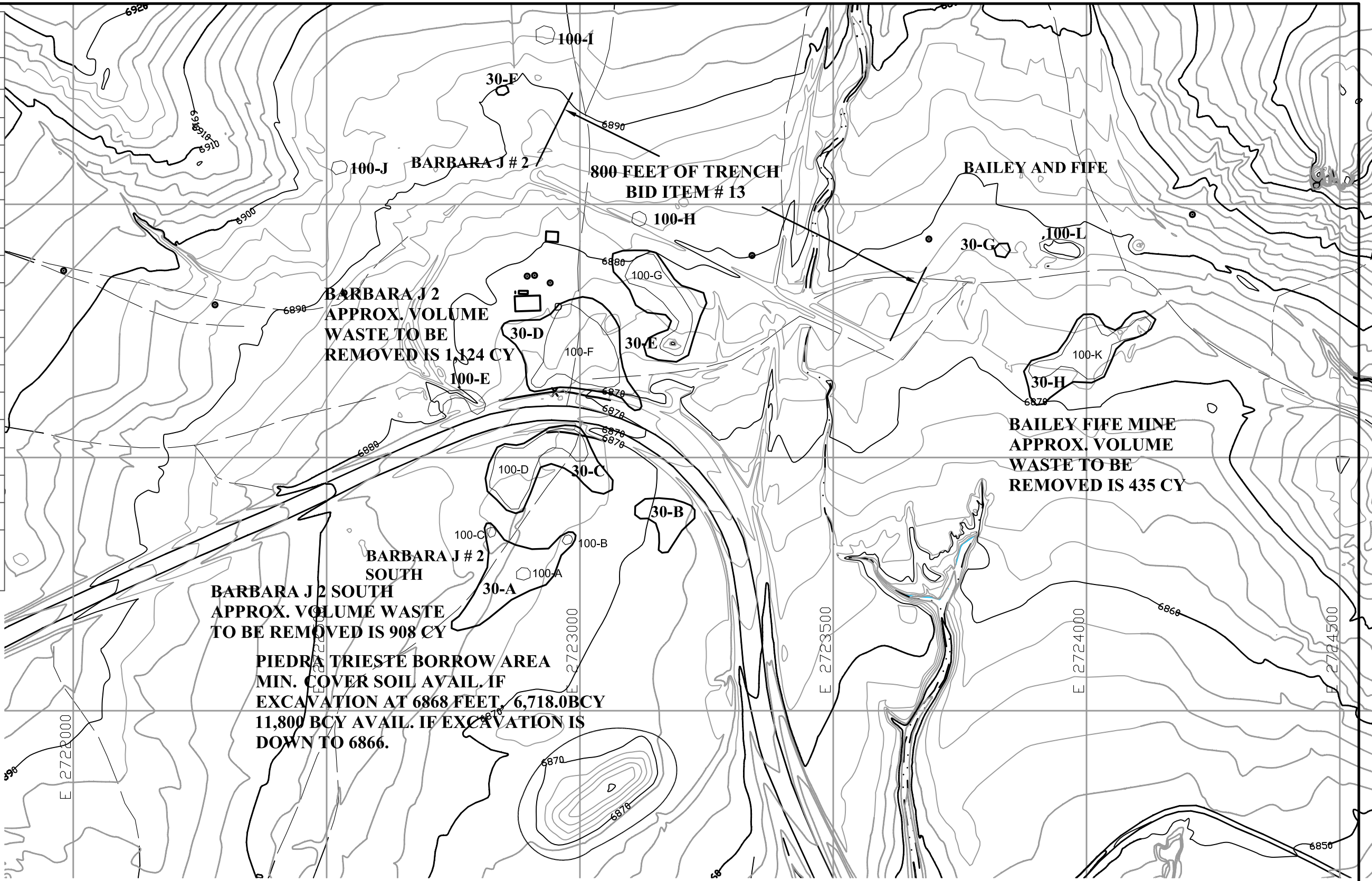


Drawing file: Barb_J_TimeCritical_Mine_Features_Reclamation2.dwg Jul 20, 2015 - 10:05am

WASTE REMOVAL			
NAME	SQ. FT	CY	TOTAL CY
BARBARA J 2 SOUTH			
30-A	19,721	365	
30-B	6,952	129	
30-C	22,256	412	908
BARBARA J 2			
30-D	34,041	630	
30-E	21,031	390	
100-E	2,960	55	
100-H	628	12	
100-I	1,038	20	
100-J	630	12	
30-F	344	6	1,124
BAILEY AND FIFE			
30-G	637	12	
30-H	20,217	375	
100-L	2,607	48	435
	133,062		



LEGEND

- BOUNDARY OF AREA WITH 30 PICU/GM RAD LEVEL
- BOUNDARY OF AREA WITH 100 PICU/GM RAD LEVEL
- MAJOR AND MINOR TOPOGRAPHIC CONTOURS
- ROADS
- TWO-TRACK ACCESS ROADS

NOTES:

1. TOPOGRAPHIC TWO (2) FOOT CONTOURS PROVIDED BY NEW MEXICO ENERGY, MINERALS, AND NATURAL RESOURCES DEPARTMENT.
2. THIS MAP IS BASED ON THE PREVAILING CONDITIONS AND IS NOT INTENDED TO BE COMPREHENSIVE; AS SUCH, OTHER UNMARKED OPENINGS MAY BE ENCOUNTERED. EXERCISE EXTREME CAUTION WHILE TRAVELING ON SITE.
3. NUMEROUS TYPES OF PHYSICAL HAZARDS CAN BE FOUND AT AML SITES. IN ADDITION TO MINE OPENINGS, HAZARDS INCLUDE BUT ARE NOT LIMITED TO; DANGEROUS MINE GASES, UNSTABLE STRUCTURES OR GROUND, EXPLOSIVES AND HAZARDOUS MATERIALS.
4. ELEVATED LEVELS OF IONIZING RADIATION ARE PRESENT THROUGHOUT THE RECLAMATION AREA, ESPECIALLY ADJACENT TO MINE WASTES.
5. PRIOR TO CONSTRUCTION, ALL AREAS OF DISTURBANCE MUST BE PRE-APPROVED BY THE PROJECT MANAGER.

ABANDONED MINE LAND PROGRAM MINING AND MINERALS DIVISION		
ENERGY, MINERALS AND NATURAL RESOURCES DEPARTMENT		
SCALE: 1" = 200'	TIME CRITICAL REMOVAL	DRAWN BY: JRS
DATE: JULY 10, 2015		REVISED:
DETAIL BARBARA J 2 BAILEY/FIFE MAP		
GRANTS URANIUM—PHASE III		DRAWING NUMBER: FIGURE 7