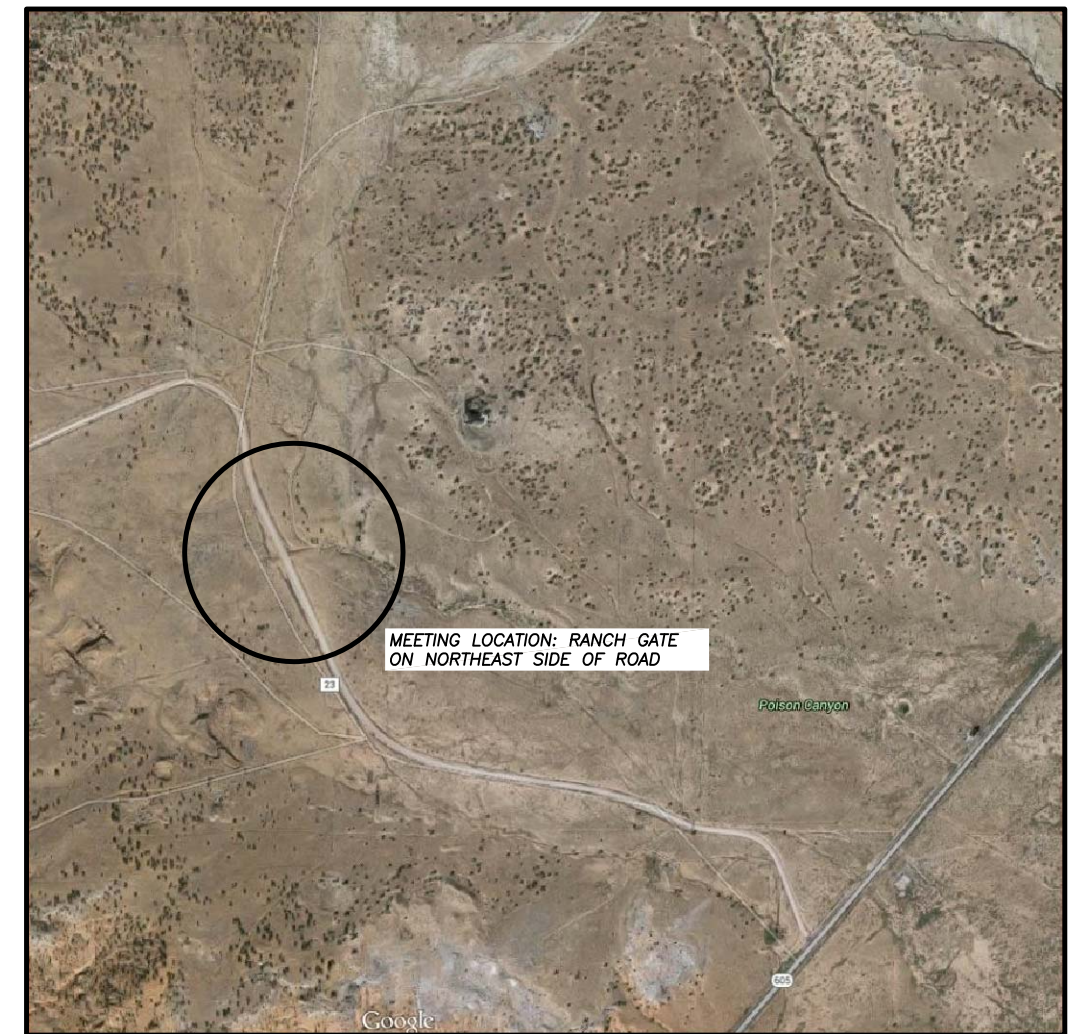
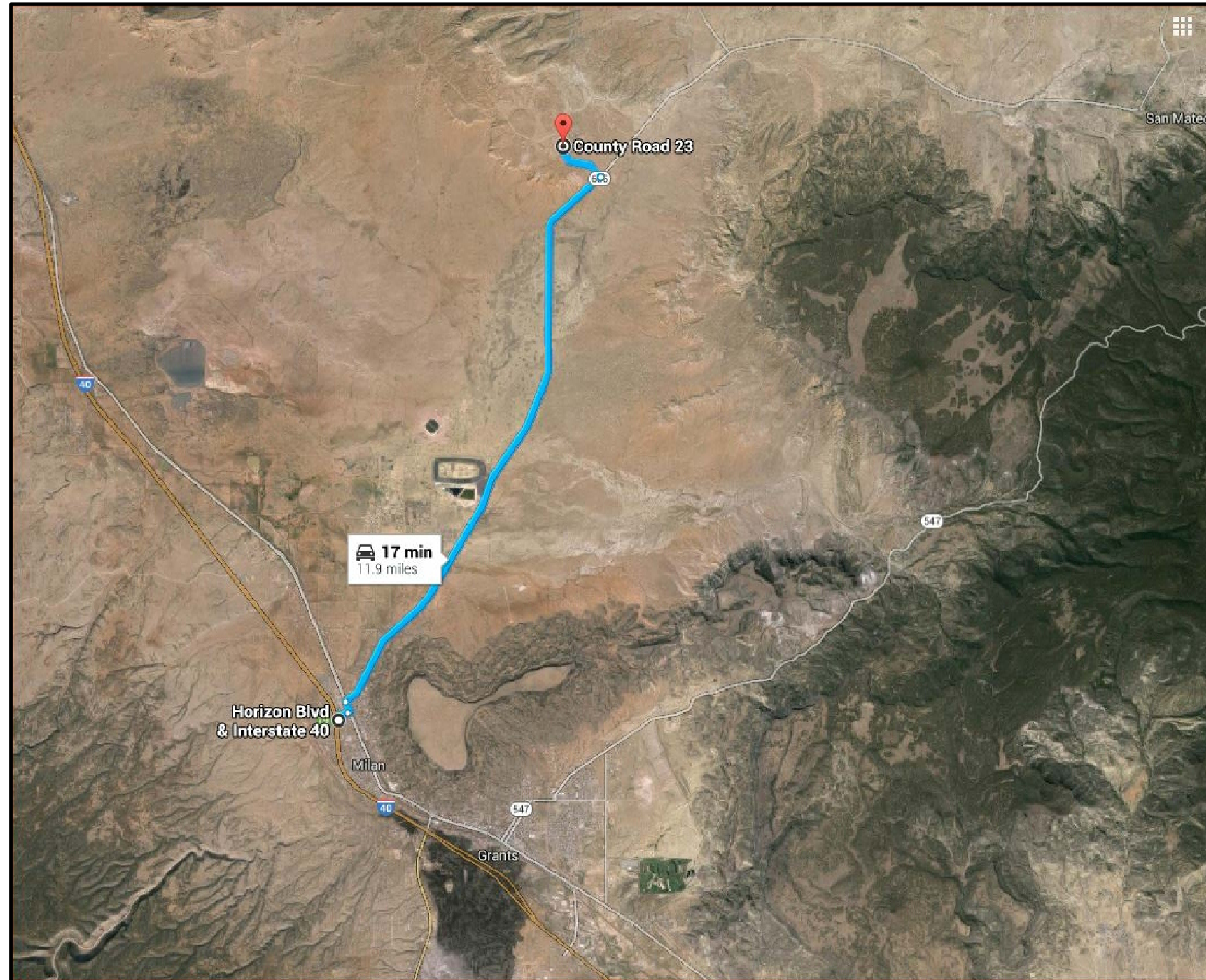
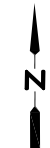


# DRAWINGS FOR THE GRANTS - URANIUM PHASE III SAFEGUARD & RECLAMATION PROJECT MC KINLEY COUNTY, NEW MEXICO JULY 2015



## INDEX OF FIGURES

COVER SHEET	1
PROJECT OVERVIEW DRILL HOLE LOCATIONS	2
SAFEGUARDING FEATURES – NORTH AREA	3
SAFEGUARDING FEATURES – SOUTH AREA	4
TYPICAL PLUG CLOSURE DRILL HOLE	5
EARTH FILL SEAL SHAFT AND PIT CLOSURE	6
DETAIL BARBARA J 2 BAILEY/FIFE MAP	7
DETAIL BARBARA J 1 & 3 AREA MAP	8
DETAIL BARBARA J 3 MAP	9



NOT DRAWN TO SCALE  
FROM "GOOGLE MAPS"

COVER.DWG PLOT SCALE 1 = 1


**NEW MEXICO**  
**Abandoned Mine Land Program**  
 MINING AND MINERALS DIVISION  
 ENERGY, MINERALS AND NATURAL RESOURCES DEPARTMENT  
 SANTA FE, NEW MEXICO

PROJECT NO. EMNRD-MMD-2015-06

# GRANTS - URANIUM PHASE III SAFEGUARD AND RECLAMATION PROJECT

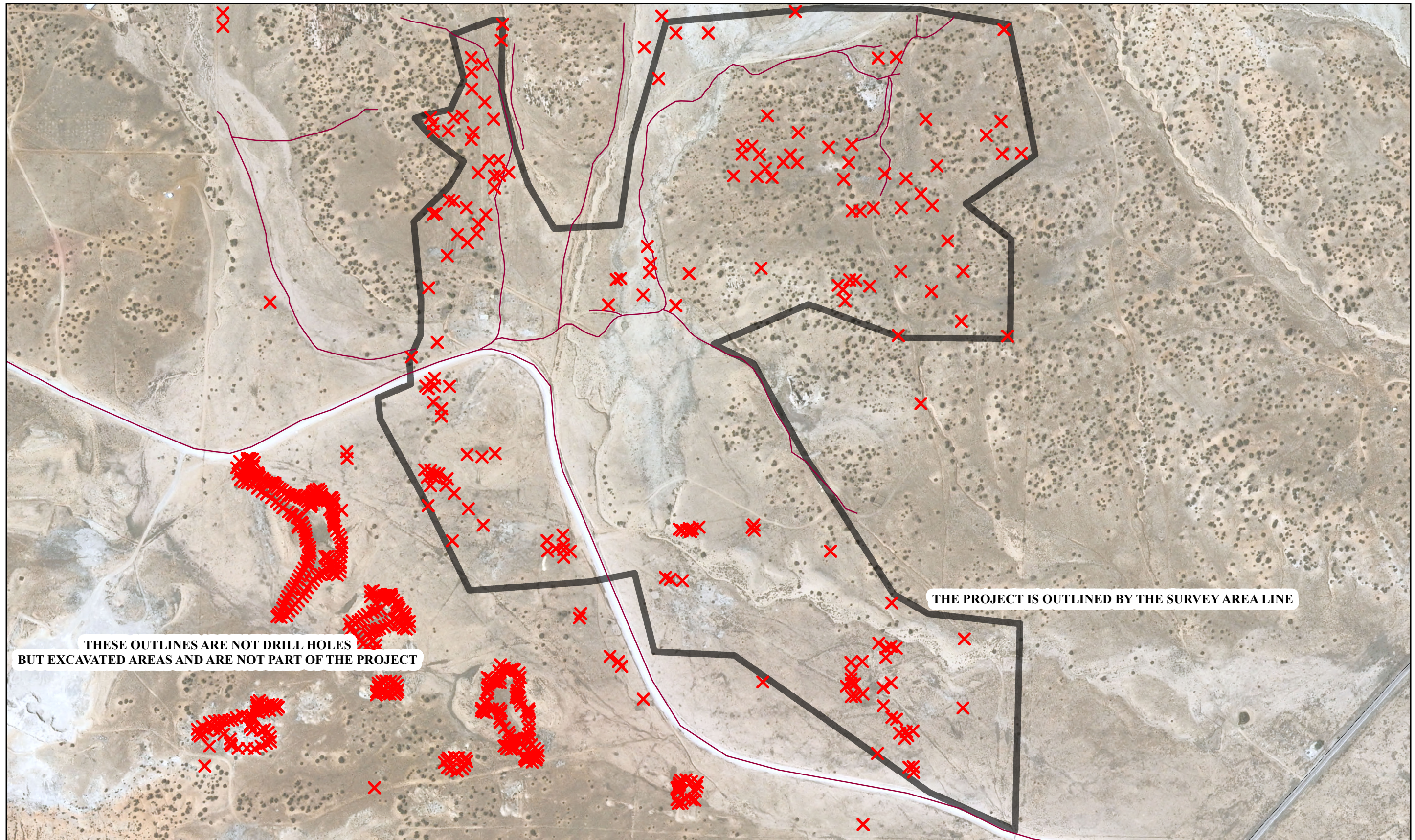
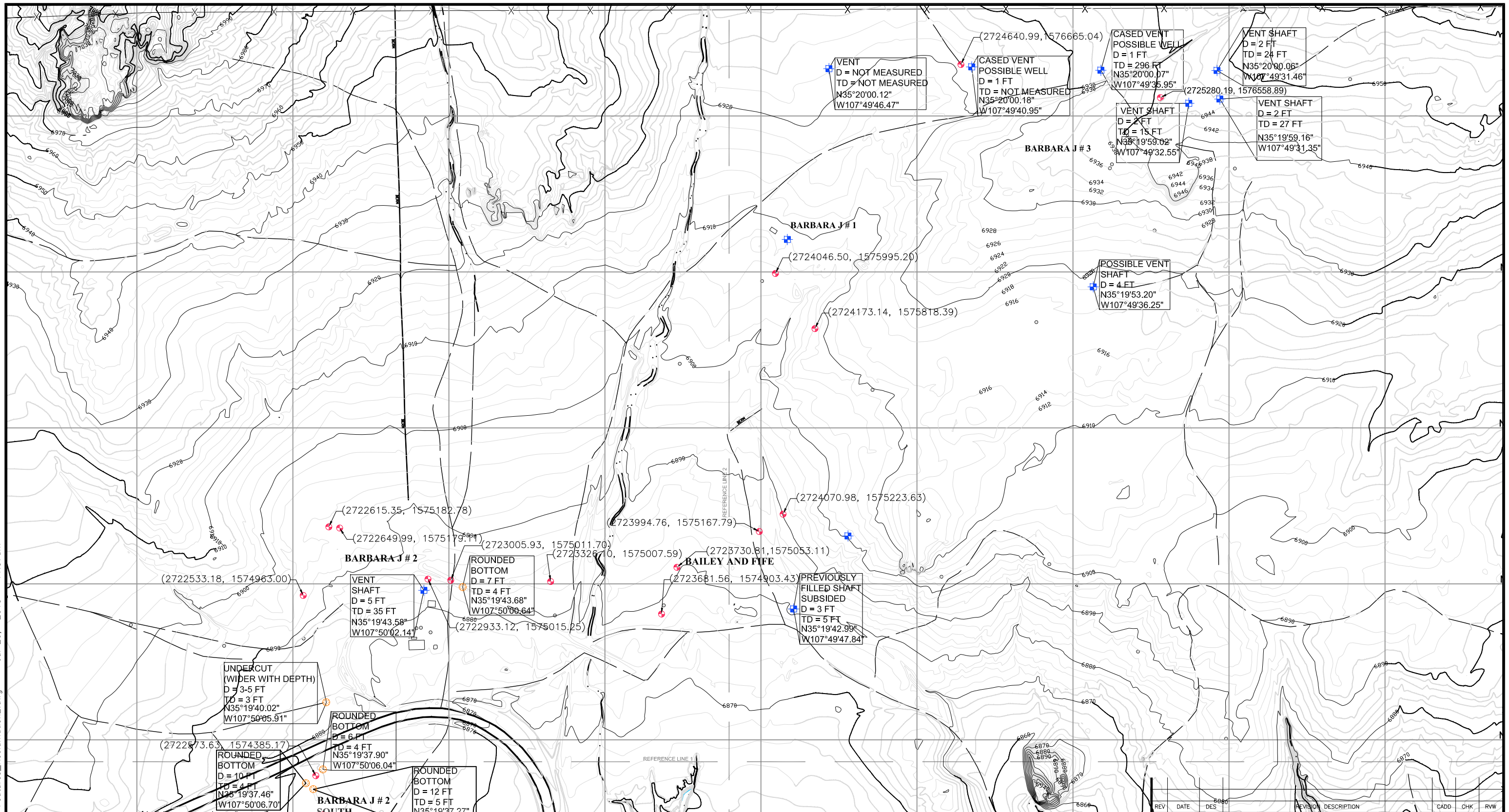


FIGURE 2 - PROJECT OVERVIEW DRILL HOLE LOCATIONS



**LEGEND**

- 6900- TOPOGRAPHIC CONTOURS
- == ROADS
- DRILLHOLE LOCATION
- VENT  
D = 1 FT  
TD = 296 FT
- ROUNDED BOTTOM  
D = 7 FT  
TD = 4 FT
- DEEP MINE OPENING  
D = APPROXIMATE DIAMETER  
TD = APPROXIMATE TOTAL DEPTH
- SHALLOW MINE OPENING  
D = APPROXIMATE DIAMETER  
TD = APPROXIMATE TOTAL DEPTH

**NOTES:**

1. TOPOGRAPHIC TWO (2) FOOT CONTOURS PROVIDED BY NEW MEXICO ENERGY, MINERALS, AND NATURAL RESOURCES DEPARTMENT.
2. SOME OF THE SITES IDENTIFIED COULD NOT BE MEASURED DUE TO OBSTRUCTION WITH TIMBERS OR OTHER COVERS. EXERCISE EXTREME CAUTION WHEN WORKING AROUND ALL SHAFTS OR POTENTIAL SHAFTS.
3. THIS MAP IS BASED ON THE PREVAILING CONDITIONS AND IS NOT INTENDED TO BE COMPREHENSIVE; AS SUCH, OTHER UNMARKED OPENINGS MAY BE ENCOUNTERED. EXERCISE EXTREME CAUTION WHILE TRAVELING ON SITE.
4. GPS LOCATIONS WERE **NOT** OBTAINED BY A PROFESSIONAL SURVEYOR AND ARE APPROXIMATE FOR REFERENCE ONLY. EXERCISE EXTREME CAUTION WHILE LOCATING SITES. COORDINATES OBTAINED USING HANDHELD GPS. LOCATIONS WILL BE FLAGGED IN THE FIELD.
5. NUMEROUS TYPES OF PHYSICAL HAZARDS CAN BE FOUND AT AML SITES. IN ADDITION TO MINE OPENINGS, HAZARDS INCLUDE BUT ARE NOT LIMITED TO; DANGEROUS MINE GASES, UNSTABLE STRUCTURES OR GROUND, EXPLOSIVES AND HAZARDOUS MATERIALS.
6. ELEVATED LEVELS OF IONIZING RADIATION ARE PRESENT THROUGHOUT THE RECLAMATION AREA, ESPECIALLY ADJACENT TO MINE WASTES.
7. PRIOR TO CONSTRUCTION, ALL AREAS OF DISTURBANCE AND ACCESS ROUTES MUST BE PRE-APPROVED BY THE PROJECT MANAGER.

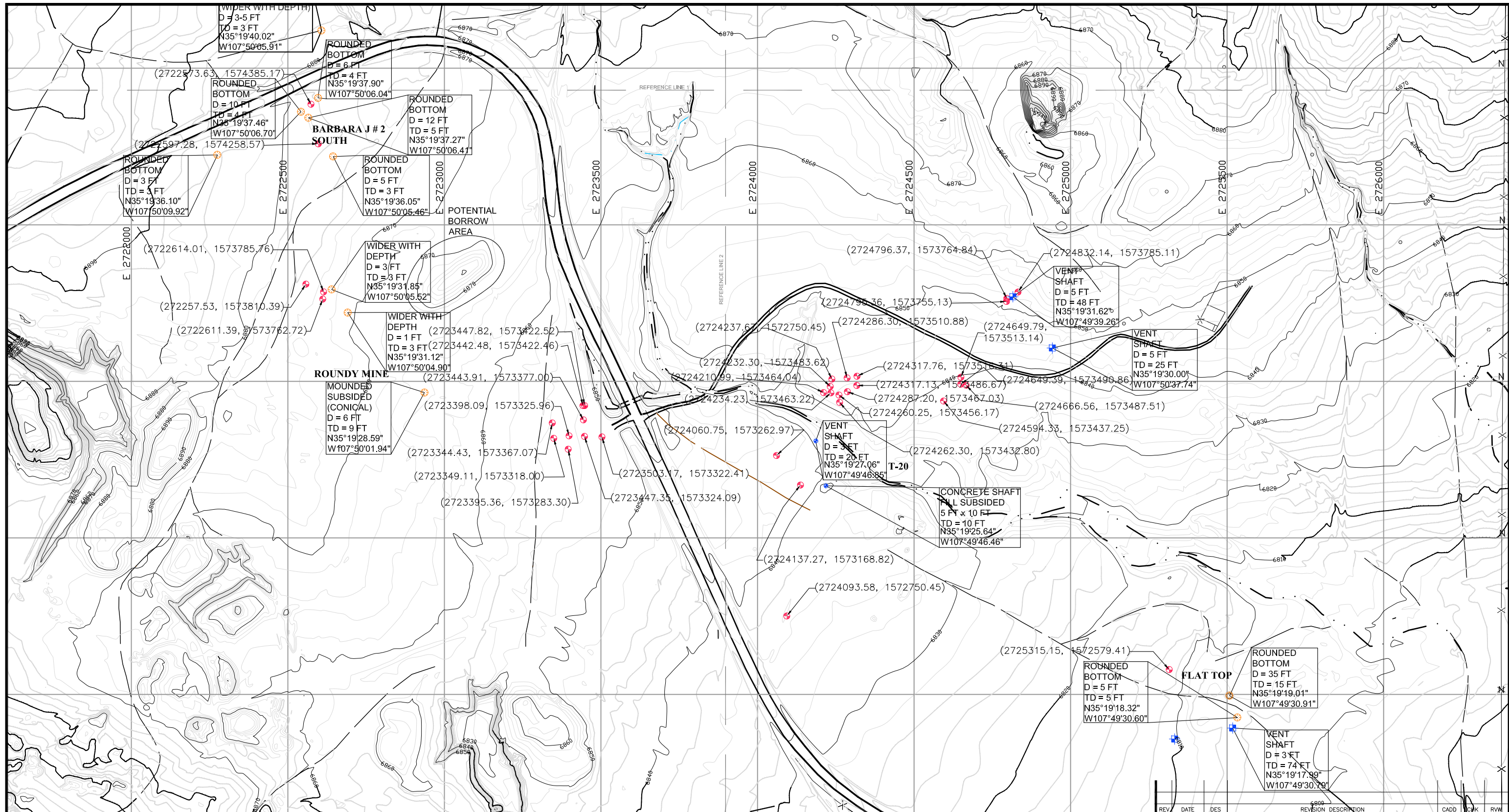
REV	DATE	DES	REVISION	DESCRIPTION	CADD	CHK	RW

PROJECT  
**NEW MEXICO MINING AND MINERALS DIVISION**  
**BARBARA J CLOSURE**  
**McKINLEY COUNTY, NEW MEXICO**

TITLE  
**SAFEGUARDING FEATURES-NORTH AREA**

<p><b>Golder Associates</b> Albuquerque, NM</p>	PROJECT No.	007-80026	FILE No.	MINE FEATURES	
	DESIGN	PDC	05/14/12	SCALE	N.T.S. REV. 1
	CADD	PDC	05/14/12		
	CHECK	JAC	05/14/12		
	REVIEW	BN	05/15/12		

**FIGURE 3**



**LEGEND**

MAJOR AND MINOR TOPOGRAPHIC CONTOURS

ROADS

DRILLHOLE LOCATION

**DEEP MINE OPENING**  
 D = APPROXIMATE DIAMETER  
 TD = APPROXIMATE TOTAL DEPTH

**SHALLOW MINE OPENING**  
 D = APPROXIMATE DIAMETER  
 TD = APPROXIMATE TOTAL DEPTH

- NOTES:**
1. TOPOGRAPHIC TWO (2) FOOT CONTOURS PROVIDED BY NEW MEXICO ENERGY, MINERALS, AND NATURAL RESOURCES DEPARTMENT.
  2. SOME OF THE SITES IDENTIFIED COULD NOT BE MEASURED DUE TO OBSTRUCTION WITH TIMBERS OR OTHER COVERS. EXERCISE EXTREME CAUTION WHEN WORKING AROUND ALL SHAFTS OR POTENTIAL SHAFTS.
  3. THIS MAP IS BASED ON THE PREVAILING CONDITIONS AND IS NOT INTENDED TO BE COMPREHENSIVE; AS SUCH, OTHER UNMARKED OPENINGS MAY BE ENCOUNTERED. EXERCISE EXTREME CAUTION WHILE TRAVELING ON SITE.
  4. GPS LOCATIONS WERE **NOT** OBTAINED BY A PROFESSIONAL SURVEYOR AND ARE APPROXIMATE FOR REFERENCE ONLY. EXERCISE EXTREME CAUTION WHILE LOCATING SITES. COORDINATES OBTAINED USING HANDHELD GPS. LOCATIONS WILL BE FLAGGED IN THE FIELD.
  5. NUMEROUS TYPES OF PHYSICAL HAZARDS CAN BE FOUND AT AML SITES. IN ADDITION TO MINE OPENINGS, HAZARDS INCLUDE BUT ARE NOT LIMITED TO; DANGEROUS MINE GASES, UNSTABLE STRUCTURES OR GROUND, EXPLOSIVES AND HAZARDOUS MATERIALS.
  6. ELEVATED LEVELS OF IONIZING RADIATION ARE PRESENT THROUGHOUT THE RECLAMATION AREA, ESPECIALLY ADJACENT TO MINE WASTES.
  7. PRIOR TO CONSTRUCTION, ALL AREAS OF DISTURBANCE AND ACCESS ROUTES MUST BE PRE-APPROVED BY THE PROJECT MANAGER.

REV	DATE	DES	REVISION DESCRIPTION	CADD	CHK	RWM

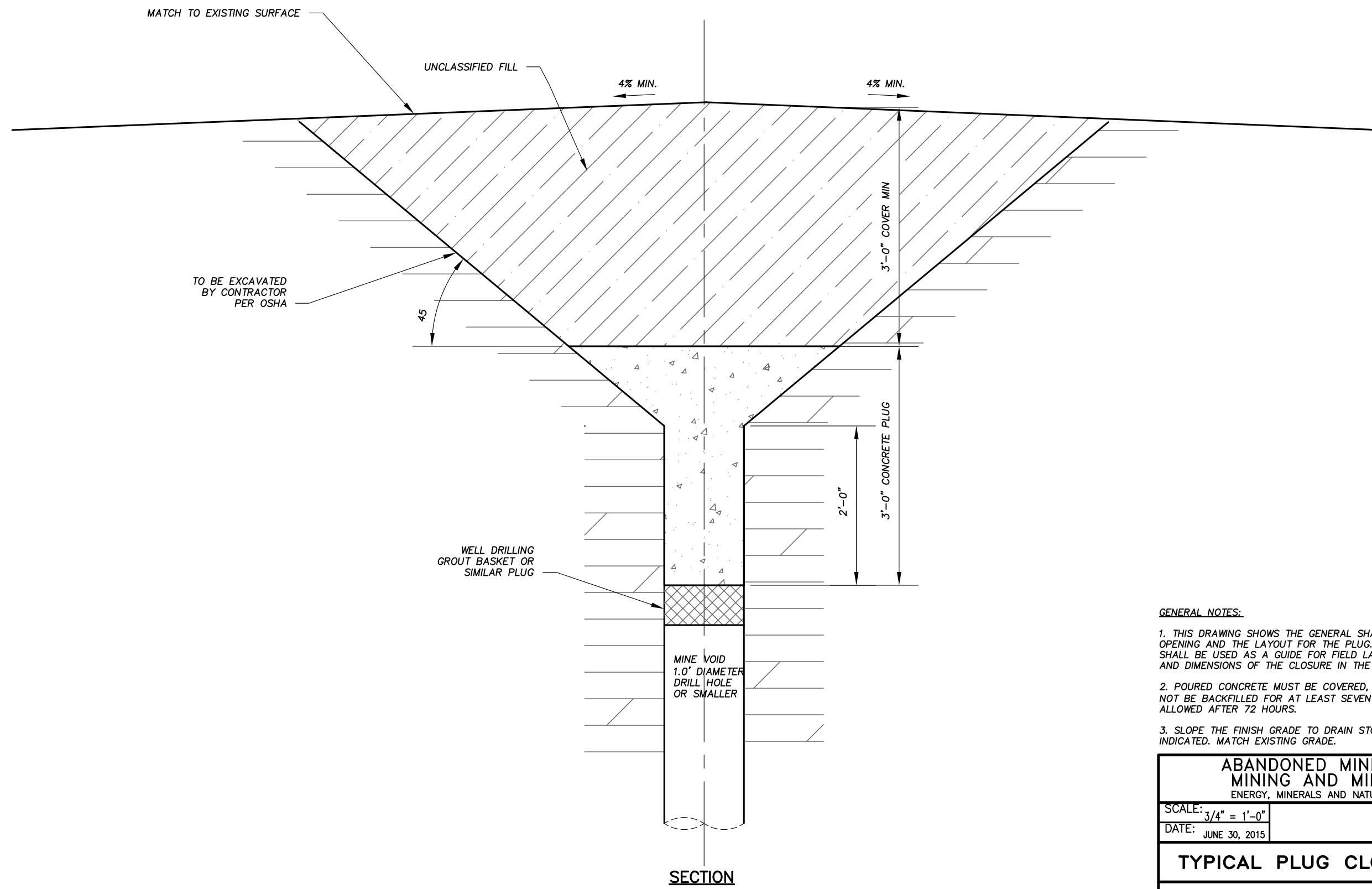
PROJECT: **NEW MEXICO MINING AND MINERALS DIVISION  
BARBARA J CLOSURE  
McKINLEY COUNTY, NEW MEXICO**

TITLE: **SAFEGUARDING FEATURES - SOUTH AREA**

PROJECT No.	007-80026	FILE No.	MINE FEATURES
DESIGN	PDC 05/14/12	SCALE	N.T.S.
CADD	PDC 05/14/12	REV.	1
CHECK	JAC 05/14/12	<b>FIGURE 4</b>	
REVIEW	BN 05/15/12		

**Golder Associates**  
Albuquerque, NM

**CAUTION** - THIS PROJECT REQUIRES CONSTRUCTION WORK IN, AROUND, AND OVER HAZARDOUS AND UNPROTECTED MINE SHAFTS, STOPES, ADITS, AND OTHER OPENINGS WHICH MAY BE OPEN TO THE SURFACE OR HIDDEN FROM VIEW BY TRASH, DEBRIS, OR THIN AND UNSTABLE LAYERS OF SURFACE MATERIALS OR ROCK. THE CONSTRUCTOR SHALL BE RESPONSIBLE FOR THOROUGHLY INVESTIGATING THE SITE CONDITIONS AND SCHEDULING HIS EQUIPMENT, EQUIPMENT OPERATIONS, PERSONNEL, AND SAFETY PROCEDURES TO PREVENT ACCIDENTS AND INJURIES.



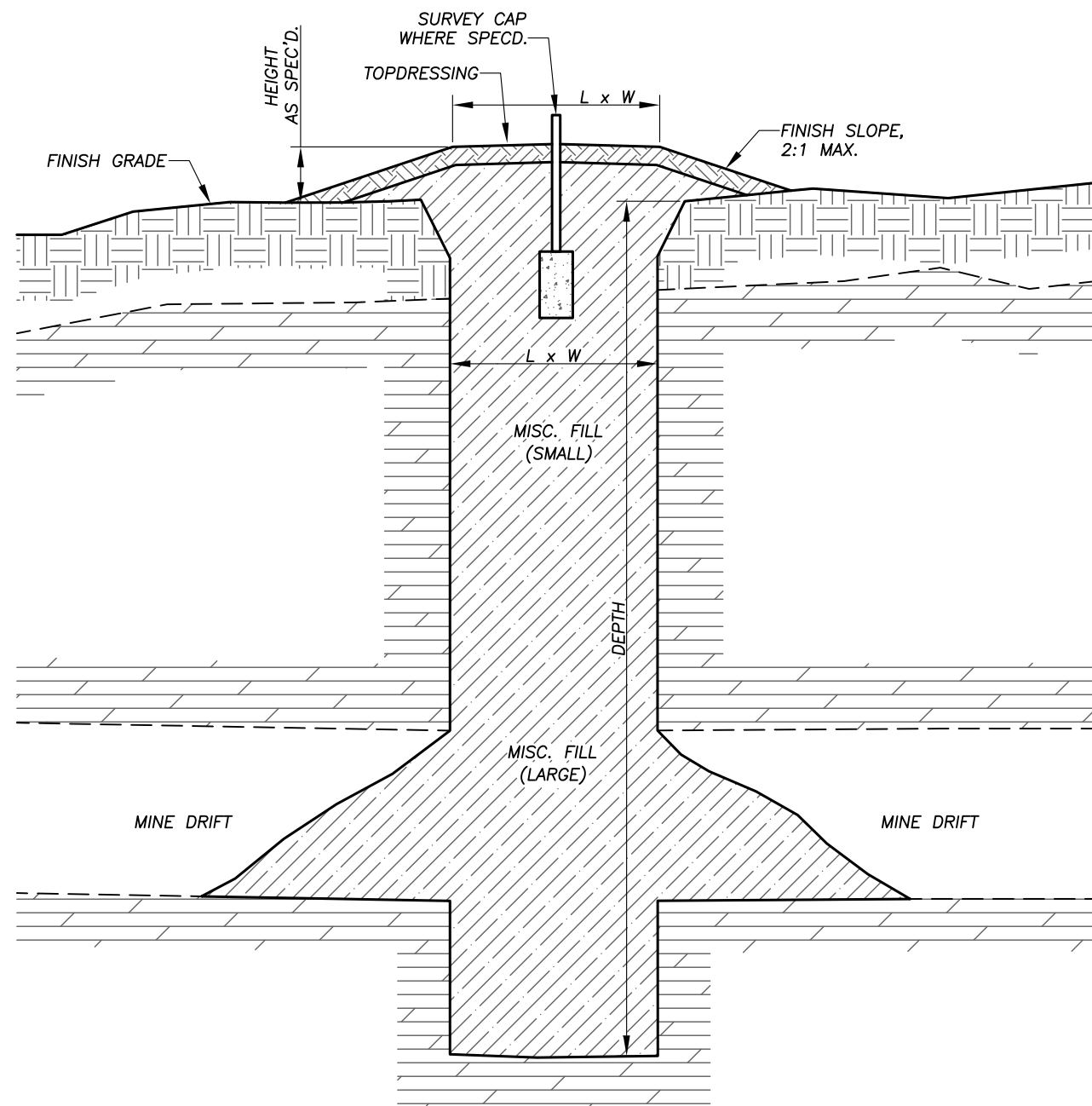
**GENERAL NOTES:**

1. THIS DRAWING SHOWS THE GENERAL SHAPE AND APPROXIMATE SIZE OF THE MINE OPENING AND THE LAYOUT FOR THE PLUG. HOLES VARY IN SIZE. THE DRAWING SHALL BE USED AS A GUIDE FOR FIELD LAYOUT. DETERMINE THE ACTUAL LAYOUT AND DIMENSIONS OF THE CLOSURE IN THE FIELD PRIOR TO FABRICATION.
2. POURED CONCRETE MUST BE COVERED, KEPT CONTINUOUSLY MOIST AND MAY NOT BE BACKFILLED FOR AT LEAST SEVEN (7) DAYS UNLESS TYPE III CEMENT THEN ALLOWED AFTER 72 HOURS.
3. SLOPE THE FINISH GRADE TO DRAIN STORM WATER AWAY FROM THE PLUG AS INDICATED. MATCH EXISTING GRADE.

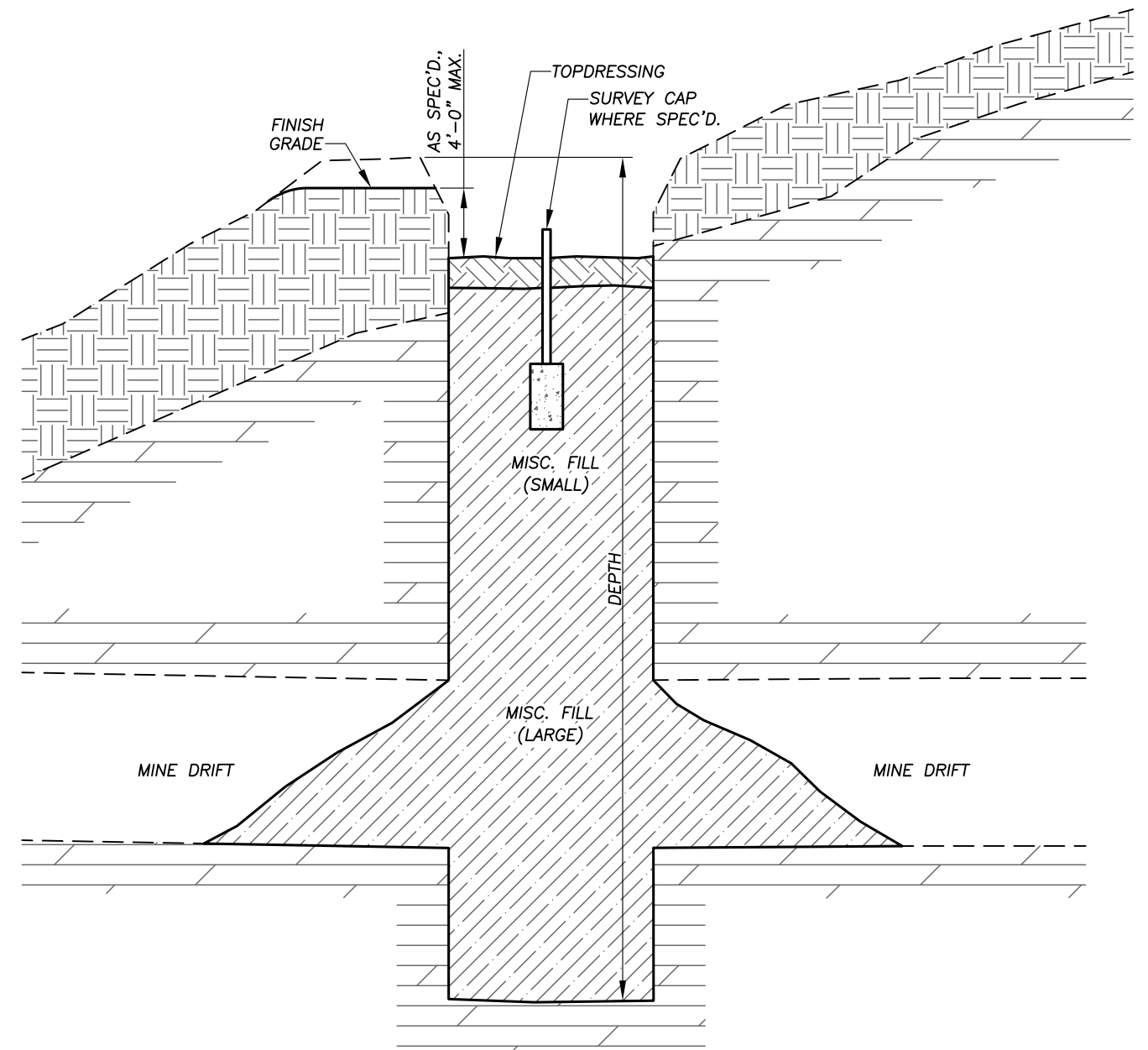
DRILL\_HOLE\_CLOSURE\_DESIGN.DWG PLOT SCALE 1 = 16

<b>ABANDONED MINE LAND PROGRAM</b>	
<b>MINING AND MINERALS DIVISION</b>	
ENERGY, MINERALS AND NATURAL RESOURCES DEPARTMENT	
SCALE: 3/4" = 1'-0"	DRAWN BY: JRS
DATE: JUNE 30, 2015	REVISED:
<b>TYPICAL PLUG CLOSURE DRILL HOLE</b>	
GRANTS URANIUM- PHASE III SAFEGUARD AND RECLAMATION PROJECT	DRAWING NUMBER: <b>FIGURE 5</b>

TYPICAL



TYPICAL MOUNDED FILL CLOSURE



TYPICAL DEPRESSED FILL CLOSURE

TYPICAL\_SHAFT\_BACKFILL.DWG PLOT SCALE 1 = 1

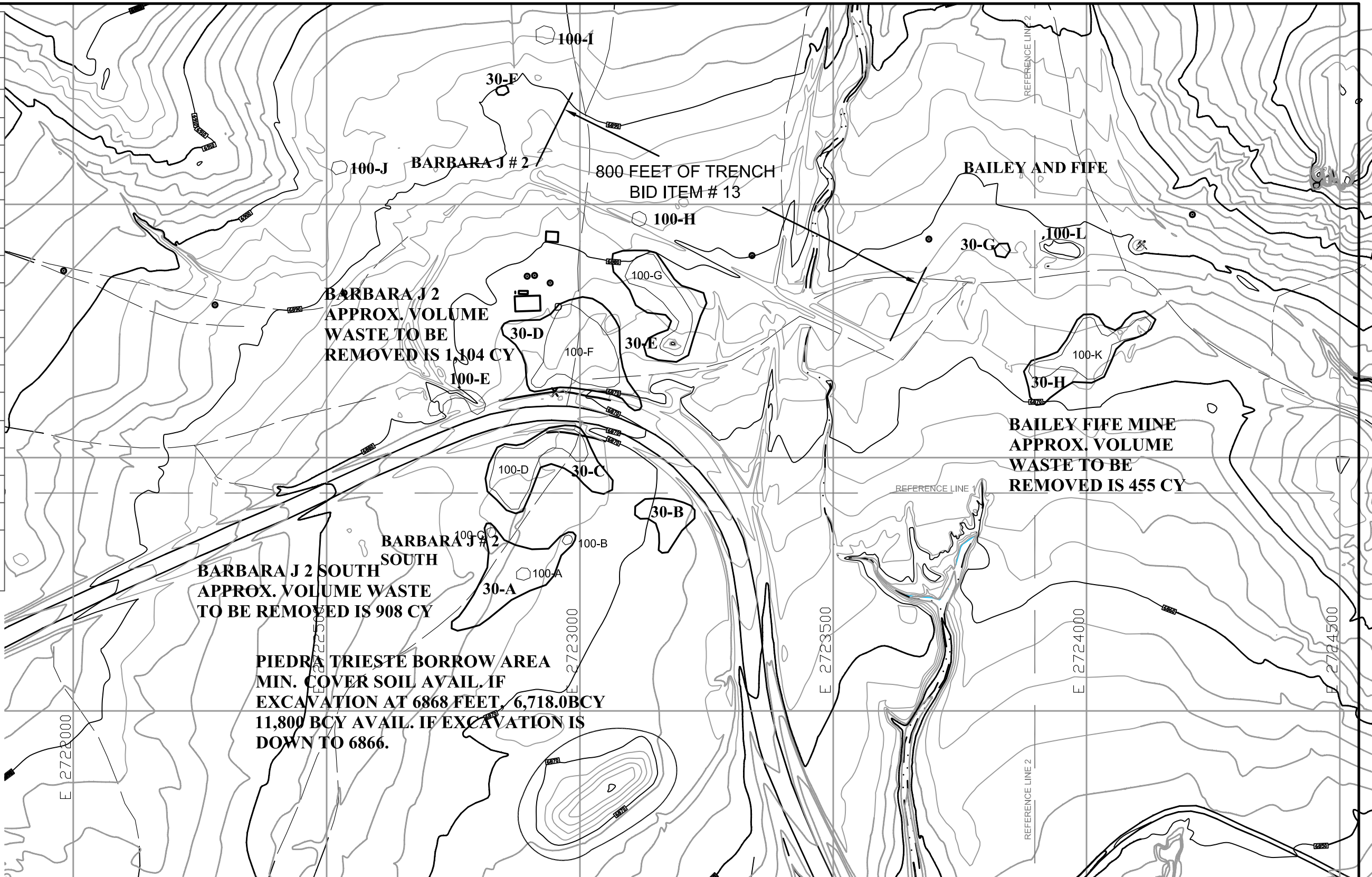
**CAUTION** - THIS PROJECT REQUIRES CONSTRUCTION WORK IN, AROUND, AND OVER HAZARDOUS AND UNPROTECTED MINE SHAFTS, STOPES, ADITS, AND OTHER OPENINGS WHICH MAY BE OPEN TO THE SURFACE OR HIDDEN FROM VIEW BY TRASH, DEBRIS, OR THIN AND UNSTABLE LAYERS OF SURFACE MATERIALS OR ROCK. THE CONSTRUCTOR SHALL BE RESPONSIBLE FOR THOROUGHLY INVESTIGATING THE SITE CONDITIONS AND SCHEDULING HIS EQUIPMENT, EQUIPMENT OPERATIONS, PERSONNEL, AND SAFETY PROCEDURES TO PREVENT ACCIDENTS AND INJURIES.

GENERAL NOTES:

1. THE FILL AT AND ABOVE DRIFT LEVELS SHALL CONSIST OF THE COARSEST MATERIAL AVAILABLE. SMALLER MATERIAL MAY BE USED ELSEWHERE. SEE THE SPECIFICATIONS FOR ADDITIONAL REQUIREMENTS.
2. AS PRACTICABLE, SHAPE THE REMAINING MINE WASTE MATERIAL TO RESEMBLE AN UNDISTURBED MINE WASTE PILE.
3. THE LENGTH AND WIDTH OF THE TOP OF THE MOUND SHALL BE EQUAL TO OR GREATER THAN THE INTERNAL SHAFT LENGTH AND WIDTH RESPECTIVELY.

<b>ABANDONED MINE LAND PROGRAM</b> <b>MINING AND MINERALS DIVISION</b> ENERGY, MINERALS AND NATURAL RESOURCES DEPARTMENT		
SCALE: NOT TO SCALE	DRAWN BY: JAK	
DATE: MAY 14, 2004	REVISED:	
<b>EARTH FILL SEAL SHAFT AND PIT CLOSURES</b>		
GRANTS URANIUM - PHASE III SAFEGUARD AND RECLAMATION PROJECT		DRAWING NUMBER: <b>FIGURE 6</b>

SOIL REMOVAL			
NAME	SQ. FT	CY	TOTAL CY
<b>BARBARA J 2 SOUTH</b>			
30-A	19,721	365	
30-B	6,952	129	
30-C	22,256	412	908
<b>BARBARA J 2</b>			
30-D	34,041	630	
30-E	21,031	390	
100-E	2,960	55	
100-H	628	12	
100-J	630	12	
30-F	344	6	1,104
<b>BAILEY AND FIFE</b>			
30-G	637	12	
30-H	20,217	375	
100-I	1,038	20	
100-L	2,607	48	455
	133,062		



**LEGEND**

- BOUNDARY OF AREA WITH 30 PICU/GM RAD LEVEL
- BOUNDARY OF AREA WITH 100 PICU/GM RAD LEVEL
- MAJOR AND MINOR TOPOGRAPHIC CONTOURS
- ROADS
- TWO-TRACK ACCESS ROADS

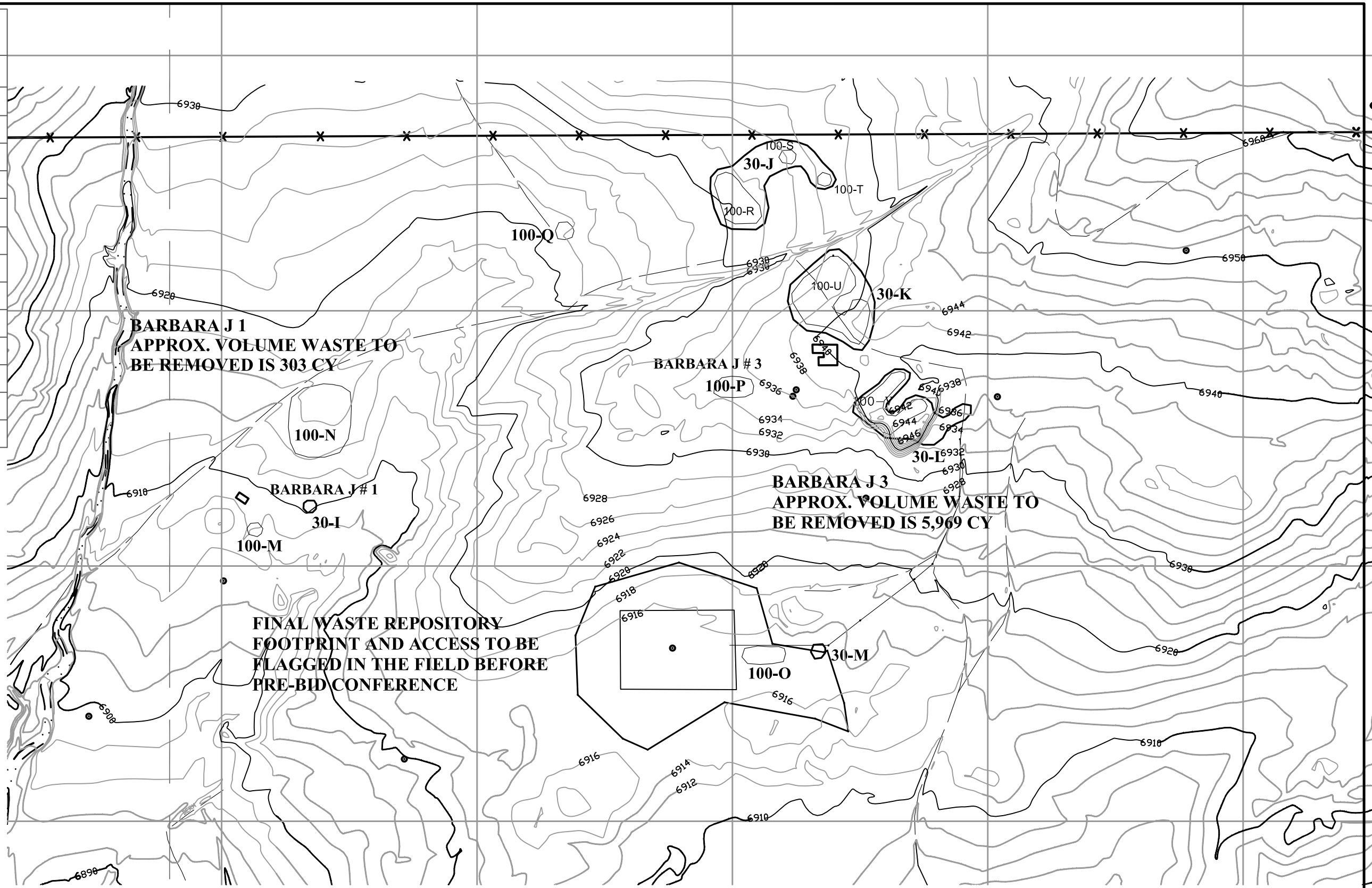
**NOTES:**

1. TOPOGRAPHIC TWO (2) FOOT CONTOURS PROVIDED BY NEW MEXICO ENERGY, MINERALS, AND NATURAL RESOURCES DEPARTMENT.
2. THIS MAP IS BASED ON THE PREVAILING CONDITIONS AND IS NOT INTENDED TO BE COMPREHENSIVE; AS SUCH, OTHER UNMARKED OPENINGS MAY BE ENCOUNTERED. EXERCISE EXTREME CAUTION WHILE TRAVELING ON SITE.
3. NUMEROUS TYPES OF PHYSICAL HAZARDS CAN BE FOUND AT AML SITES. IN ADDITION TO MINE OPENINGS, HAZARDS INCLUDE BUT ARE NOT LIMITED TO; DANGEROUS MINE GASES, UNSTABLE STRUCTURES OR GROUND, EXPLOSIVES AND HAZARDOUS MATERIALS.
4. ELEVATED LEVELS OF IONIZING RADIATION ARE PRESENT THROUGHOUT THE RECLAMATION AREA, ESPECIALLY ADJACENT TO MINE WASTES.
5. PRIOR TO CONSTRUCTION, ALL AREAS OF DISTURBANCE MUST BE PRE-APPROVED BY THE PROJECT MANAGER.

<b>ABANDONED MINE LAND PROGRAM</b>		
<b>MINING AND MINERALS DIVISION</b>		
ENERGY, MINERALS AND NATURAL RESOURCES DEPARTMENT		
SCALE: 1" = 200'	TIME CRITICAL REMOVAL	DRAWN BY: JRS
DATE: JULY 10, 2015		REVISED:
<b>DETAIL BARBARA J 2 BAILEY/FIFE MAP</b>		
GRANTS URANIUM—PHASE III		DRAWING NUMBER: <b>FIGURE 7</b>

WASTE REMOVAL

NAME	SQ. FT	CY	TOTAL CY
<b>BARBARA J 1</b>			
100-M	619	12	
100-N	15,237	282	
30-I	491	9	303
<b>BARBARA J 3</b>			
100-O	2,598	48	
30-M	620	12	
100-P	2,715	51	
30-L	15,836	5,025	
30-K	22,738	420	
30-J	21,305	395	
100-Q	971	18	5,969
	83,130		



LEGEND

- BOUNDARY OF AREA WITH 30 PICU/GM RAD LEVEL
- BOUNDARY OF AREA WITH 100 PICU/GM RAD LEVEL
- MAJOR AND MINOR TOPOGRAPHIC CONTOURS
- ROADS
- TWO-TRACK ACCESS ROADS

NOTES:

1. TOPOGRAPHIC TWO (2) FOOT CONTOURS PROVIDED BY NEW MEXICO ENERGY, MINERALS, AND NATURAL RESOURCES DEPARTMENT.
2. THIS MAP IS BASED ON THE PREVAILING CONDITIONS AND IS NOT INTENDED TO BE COMPREHENSIVE; AS SUCH, OTHER UNMARKED OPENINGS MAY BE ENCOUNTERED. EXERCISE EXTREME CAUTION WHILE TRAVELING ON SITE.
3. NUMEROUS TYPES OF PHYSICAL HAZARDS CAN BE FOUND AT AML SITES. IN ADDITION TO MINE OPENINGS, HAZARDS INCLUDE BUT ARE NOT LIMITED TO; DANGEROUS MINE GASES, UNSTABLE STRUCTURES OR GROUND, EXPLOSIVES AND HAZARDOUS MATERIALS.
4. ELEVATED LEVELS OF IONIZING RADIATION ARE PRESENT THROUGHOUT THE RECLAMATION AREA, ESPECIALLY ADJACENT TO MINE WASTES.
5. PRIOR TO CONSTRUCTION, ALL AREAS OF DISTURBANCE MUST BE PRE-APPROVED BY THE PROJECT MANAGER.




<b>ABANDONED MINE LAND PROGRAM</b> <b>MINING AND MINERALS DIVISION</b> <small>ENERGY, MINERALS AND NATURAL RESOURCES DEPARTMENT</small>		
SCALE: 1" = 200'	TIME CRITICAL REMOVAL	DRAWN BY: JRS
DATE: JULY 10, 2015		REVISED:
<b>DETAIL BARBARA J 1 &amp; 3 AREA MAP</b>		
GRANTS URANIUM—PHASE III		DRAWING NUMBER: <b>FIGURE 8</b>



Drawing file: Barb\_J\_TimeCritical\_Mine Features\_Reclamation2.dwg Jul 20, 2015 - 9:44am

**APPROXIMATE DESIGN:  
FINAL CONTOURS TO BE  
DETERMINED AFTER  
WASTE REMOVAL**

**LEGEND**

-  MAJOR AND MINOR TOPOGRAPHIC CONTOURS
-  ROADS
-  TWO-TRACK ACCESS ROADS

**NOTES:**

1. TOPOGRAPHIC TWO (2) FOOT CONTOURS PROVIDED BY NEW MEXICO ENERGY, MINERALS, AND NATURAL RESOURCES DEPARTMENT.
2. THIS MAP IS BASED ON THE PREVAILING CONDITIONS AND IS NOT INTENDED TO BE COMPREHENSIVE; AS SUCH, OTHER UNMARKED OPENINGS MAY BE ENCOUNTERED. EXERCISE EXTREME CAUTION WHILE TRAVELING ON SITE.
3. NUMEROUS TYPES OF PHYSICAL HAZARDS CAN BE FOUND AT AML SITES. IN ADDITION TO MINE OPENINGS, HAZARDS INCLUDE BUT ARE NOT LIMITED TO; DANGEROUS MINE GASES, UNSTABLE STRUCTURES OR GROUND, EXPLOSIVES AND HAZARDOUS MATERIALS.
4. ELEVATED LEVELS OF IONIZING RADIATION ARE PRESENT THROUGHOUT THE RECLAMATION AREA, ESPECIALLY ADJACENT TO MINE WASTES.
5. PRIOR TO CONSTRUCTION, ALL AREAS OF DISTURBANCE MUST BE PRE-APPROVED BY THE PROJECT MANAGER.

<b>ABANDONED MINE LAND PROGRAM MINING AND MINERALS DIVISION</b>		
<small>ENERGY, MINERALS AND NATURAL RESOURCES DEPARTMENT</small>		
SCALE: 3/8" = 1'-0"	<b>TIME CRITICAL REMOVAL</b>	DRAWN BY: JRS
DATE: JULY 10, 2015		REVISED:
<b>DETAIL BARBARA J 3 MAP</b>		
GRANTS URANIUM—PHASE III		<b>FIGURE 9</b>

