

San Pedro Mine Safeguard Project Phase III

Welcome!

Please enter your contact information in Zoom chat

Name and Title

Company Name

Mailing Address

Phone Number

Email Address



San Pedro Mine Safeguard Project Phase III

New Mexico Abandoned Mine Land Program

Thursday October 8, 2020

ITB No. 10-52100-20-06025

Project Number: EMNRD-MMD-2020-04



Prebid Meeting Sign-In

- Please enter the following info in the Zoom “Chat” box to record your attendance:
 - Name and Title
 - Company Name
 - Mailing Address
 - Phone Number
 - Email Address
- Phone-only attendees: Send an email to Amanda Muller, Program Operations Analyst, at Amanda.Muller@state.nm.us to record your attendance

Contact Information

Project Engineer: Meghan McDonald, P.E.
(505) 629-9872
Meghan.McDonald@state.nm.us

Program Operations Analyst: Amanda Muller
(505) 819-7297
Amanda.Muller@state.nm.us

Project Manager: Laurence D'Alessandro
(505) 603-9245
Laurence.DAlessandro@state.nm.us

Procurement Specialist: Mark Lujan
(505) 827-0564
Mark.Lujan@state.nm.us

Questions

- Verbal responses to questions will not be binding
- All questions regarding this ITB MUST be submitted in writing to:
- **Mark.Lujan@state.nm.us**

Outline

- Summary of Bid(Mark Lujan)
- AML Program Overview (Meghan McDonald)
- Project Location and Access (Laurence D'Alessandro)
- Summary of Work (Meghan McDonald)
- Conclusion (Meghan McDonald)

Outline

- **Summary of Bid (Mark Lujan)**
- AML Program Overview (Meghan McDonald)
- Project Location and Access (Laurence D'Alessandro)
- Summary of Work (Meghan McDonald)
- Conclusion (Meghan McDonald)

Summary of Bid

Bids Due:

**October 30, 2020
by 2:00 P.M. MDT**

Summary of Bid

- ITB No. 10-52100-20-06025
- Invitation to Bid and Bid Form:
<https://www.generalservices.state.nm.us/statepurchasing/active-procurements.aspx>
- Project Manual, including technical specifications and drawings:
<http://www.emnrd.state.nm.us/MMD/AML/SanPedroPhaseIII.html>
- To submit your bid package:
<https://bids.sciquest.com/apps/Router/PublicEvent?CustomerOrg=StateOfNewMexico>
[CO](https://bids.sciquest.com/apps/Router/PublicEvent?CustomerOrg=StateOfNewMexico)

ELECTRONIC SUBMISSIONS ONLY!!!

If you find that you need assistance uploading your Bid into our online system or if you need help registering as a supplier in our system, please call Support Desk at 505-827-0467.

Summary of Bid

- Questions Due: October 16, 2020
- Answers Due: October 21, 2020
- Last Amendment Deadline: October 23, 2020
- Bid Form: Review and complete the entire bid form, plus required attachments
- Bid Bond: In the amount of five percent (5%) of the total Base Bid amount
- Amendments: There have been no amendments released to date

Summary of Bid

- Subcontractor Listing form
 - Public Works Wage Rate Determination – found in Project Manual
 - Bid Valid for a minimum of 120 days
 - Sample Contract included in Project Manual
- * Bidders **must** acknowledge amendments or else submittal will be deemed UNRESPONSIVE*

Summary of Bid

- **Prices**

- **Lump Sum Prices Include:**

- 1) Mobilization
- 2-13) Backfill of Features
- 14-15) Construct Vertical Double Culverts with Bat Gate and Polyurethane Foam
- 16-17) Construct Horizontal Culvert with Bat Gate with Grouted Rock Bulkhead
- 18) Construct Weathering Steel Cap Over 8-inch Diameter Vertical Pipe at Feature G39

- **Unit Prices Include:**

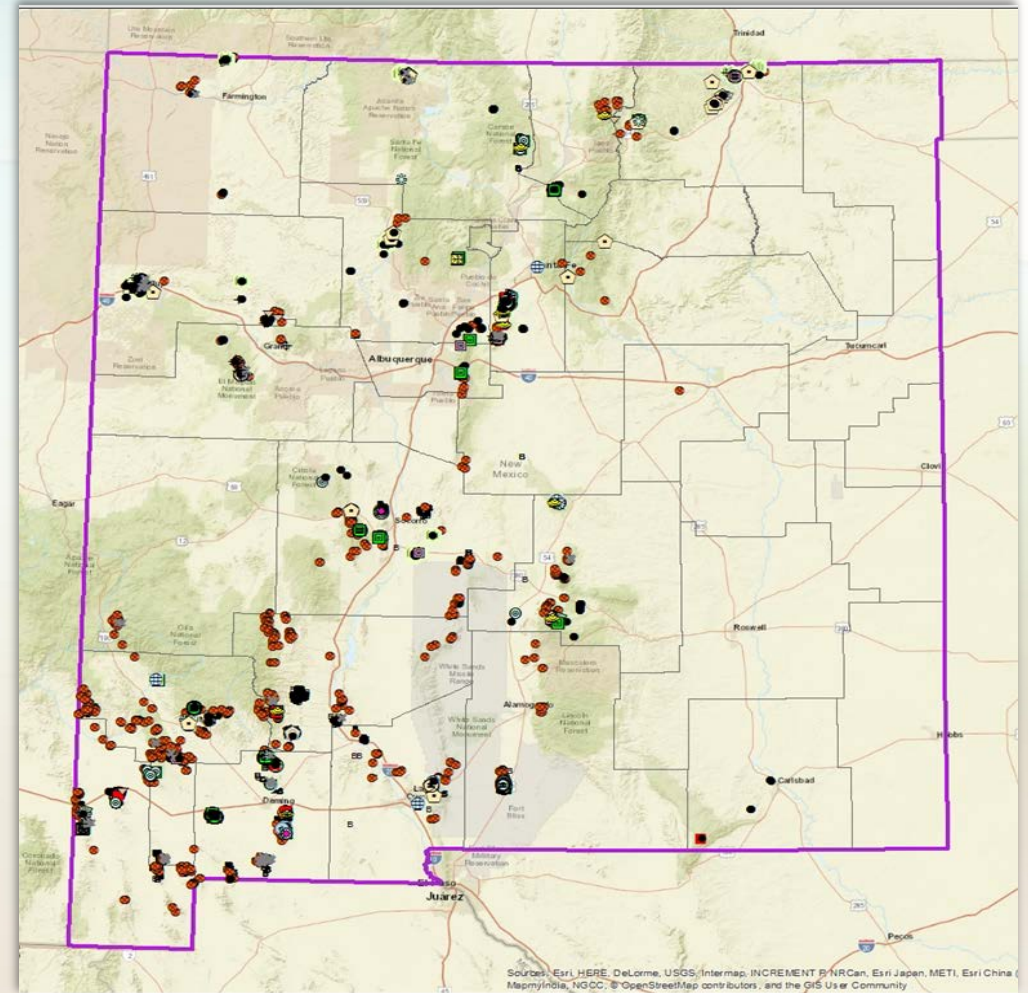
- 19) Construct Barbed Wire Fencing at Features G63 and G68 (LF)
- 20) Seeding, Complete in Place (AC)

Outline

- Summary of Bid (Mark Lujan)
- **AML Program Overview (Meghan McDonald)**
- Project Location and Access (Laurence D'Alessandro)
- Summary of Work (Meghan McDonald)
- Conclusion (Meghan McDonald)

New Mexico Abandoned Mine Land Program

- Funded by OSMRE using a fee on coal production
- Safeguarding and reclaiming abandoned mine lands in NM since 1981
- Over 15,000 abandoned mine features in the State of New Mexico
- 3,000+ Mine Openings Safeguarded to Date



AML's three reclamation priorities are:

1. Protection of public health, safety, and property from immediate hazards, resulting from historic mining practices
2. Protection of public health, safety and general welfare from adverse effects of past mineral mining and processing practices, which do not constitute an extreme danger
3. Restoration of lands and waters degraded by adverse effects of past mining practices.



San Pedro Mining History

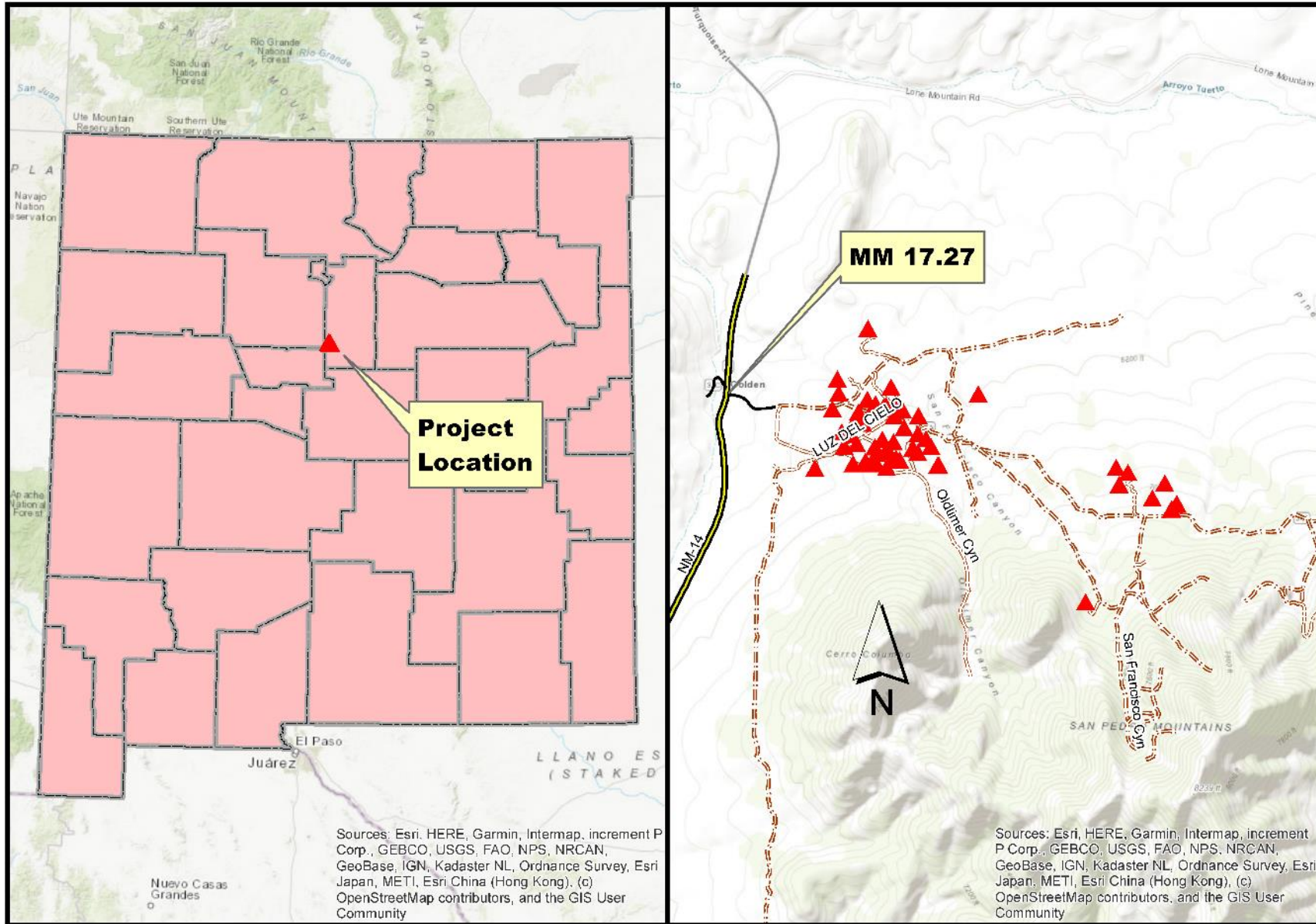
- Golden Placer Field
- Silver and Gold
- Colonial era-mining by the Spanish
- New Placer Mining District
 - 1830's – 1920s



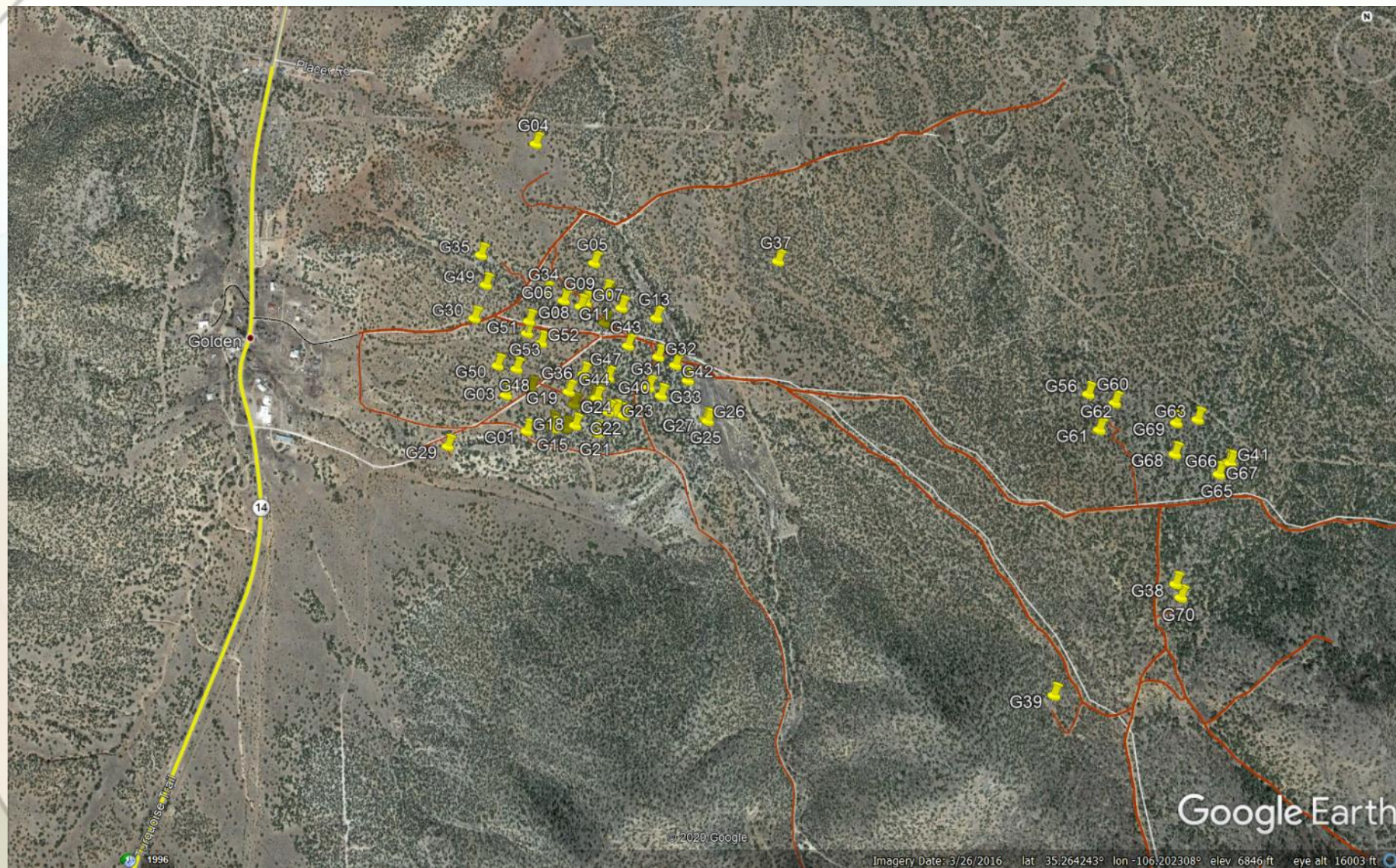
Outline

- Summary of Bid (Mark Lujan)
- AML Program Overview (Meghan McDonald)
- **Project Location and Access (Laurence D'Alessandro)**
- Summary of Work (Meghan McDonald)
- Conclusion (Meghan McDonald)

Project Location and Access



Project Location and Access



Project Location and Access



Typical Terrain



Outline

- Summary of Bid (Mark Lujan)
- AML Program Overview (Meghan McDonald)
- Project Location and Access (Laurence D'Alessandro)
- **Summary of Work (Meghan McDonald)**
- Conclusion (Meghan McDonald)

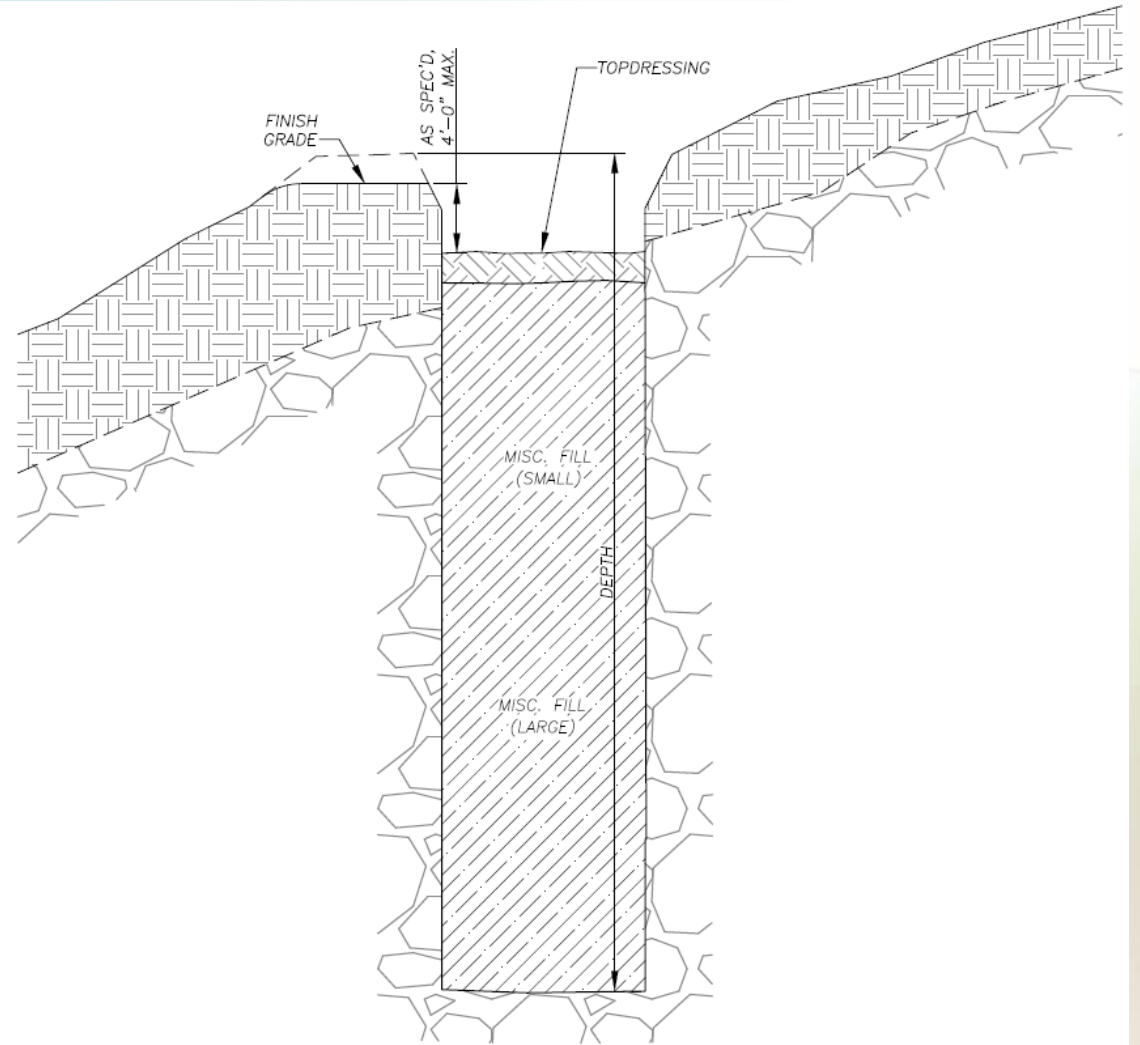
Summary of Work

- Backfilling 52 mine features consisting of prospect pits and vertical shafts using mine waste soil and rock;
- Construction of Vertical Double Culverts with Bat Gate and Polyurethane Foam, constructed on two vertical shafts;
- Construction of Horizontal Culvert with Bat Gate in Grouted Rock Bulkhead; constructed on three horizontal adits; one of the closures includes a removeable locking bar;
- Construction of two barbed wire fences around open prospect pits;
- Capping an 8-inch diameter, 93 feet deep vertical pipe with a weathering steel cap;
- Seeding of all areas disturbed by construction.

Summary of Work: Backfilling

- Backfilling of 52 mine features
 - Prospect pits
 - Vertical shafts
 - Use surrounding mine waste soil and rock
- Small rubber-tired or rubber-tracked equipment
 - Excavators 20,000 pounds or less
 - Backhoes 15,000 pounds or less

SOW: Backfilling



DEPRESSED BACKFILL DESIGN
(TYPICAL SECTION)

SOW: Backfilling



SOW: Vertical Double Culverts over Shafts

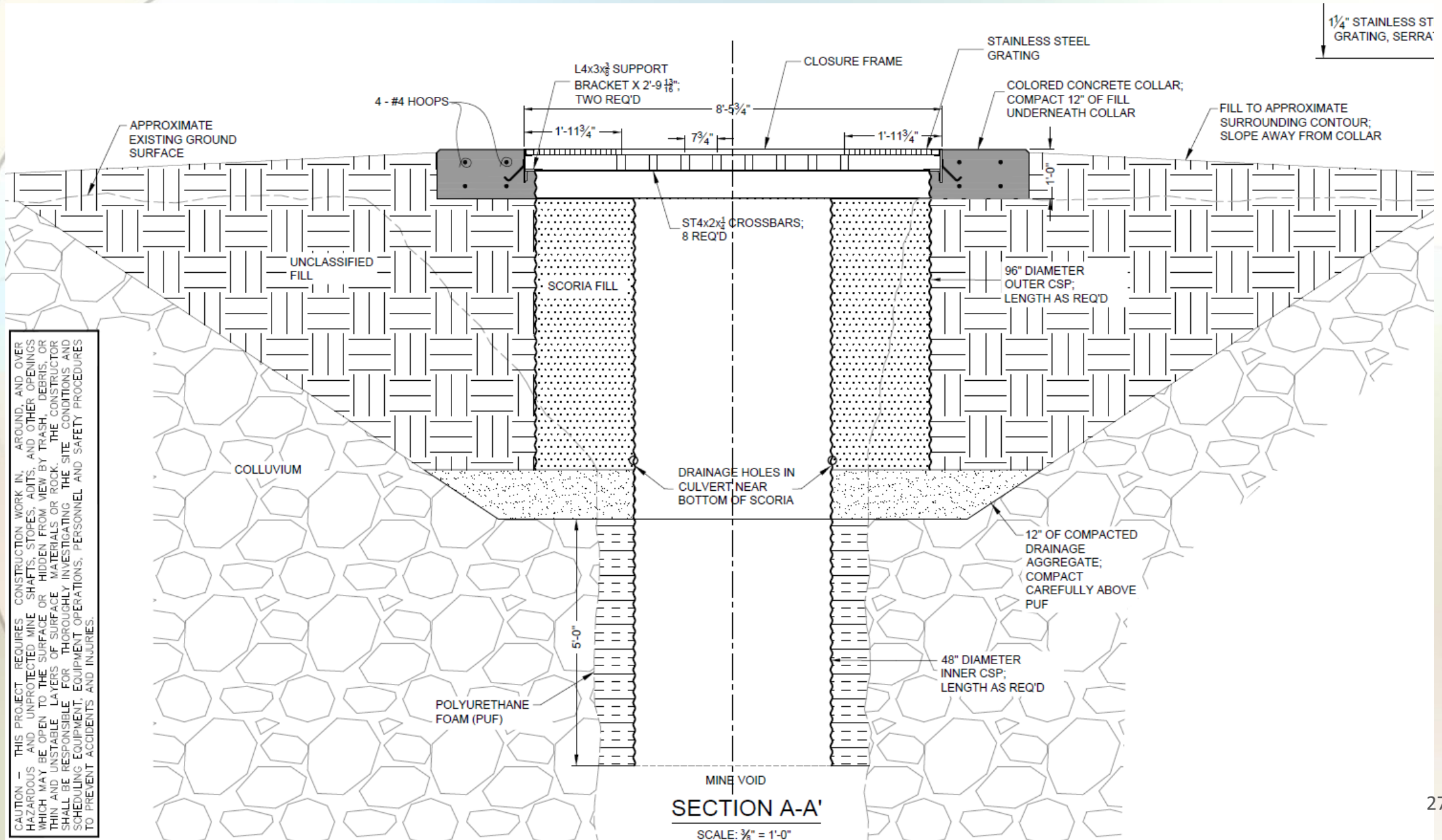


Shaft G-14: 5.5' DIAMETER SHAFT IN INTERIOR OF FEATURE WIDENING TO 10.5' WIDE x 11' LONG PIT. FEATURE IS 35' DEEP FROM TOP OF PIT

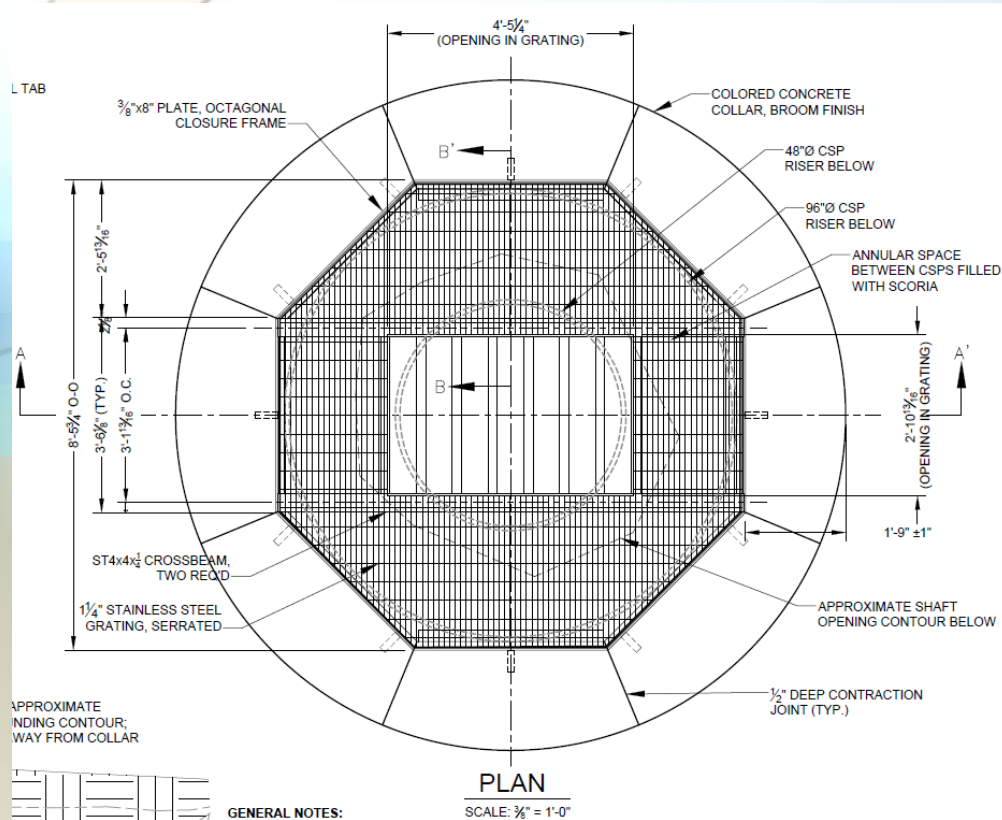


Shaft G-23: 4.5' WIDE BY 5' LONG SHAFT IN INTERIOR OF FEATURE WIDENING TO 10.5 WIDE BY 11' LONG PIT. FEATURE IS 14' DEEP FROM TOP OF PIT.

SOW: Vertical Double Culverts over Shafts



SOW: Vertical Double Culverts over Shafts



Example from Lake Valley project

(exception: no paver stones to be used in San Pedro Phase III project)

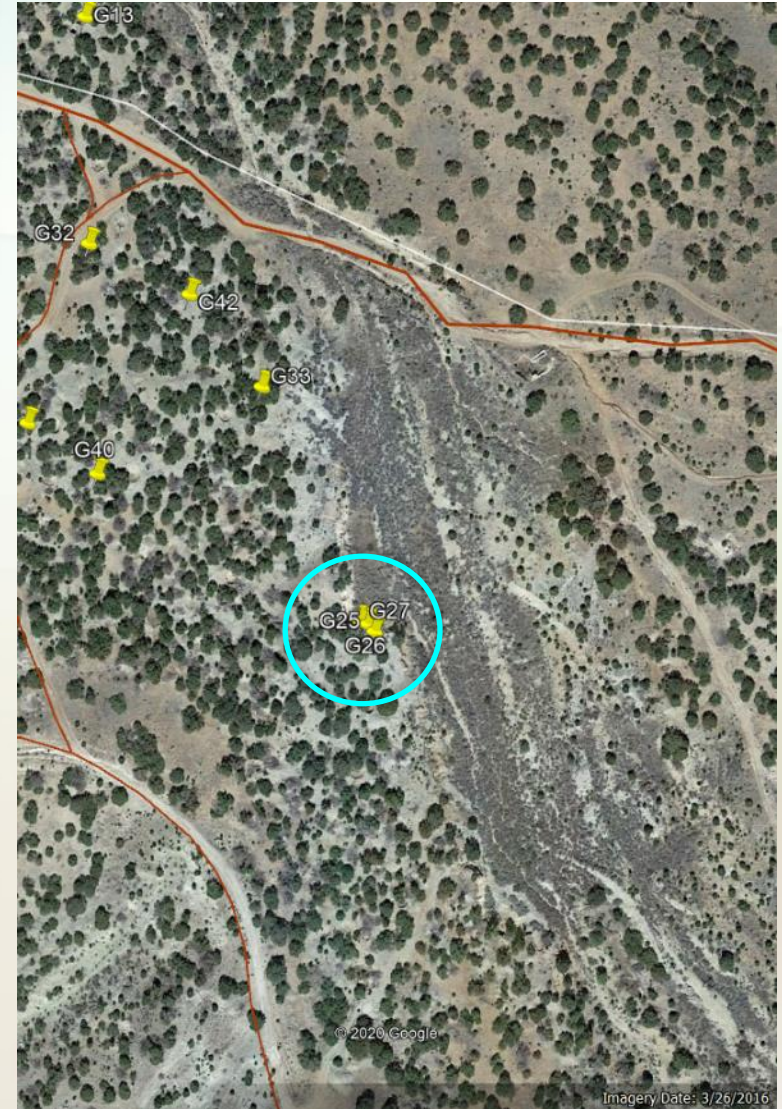
SOW: Horizontal Culvert, Bat Gate, Rock Bulkhead



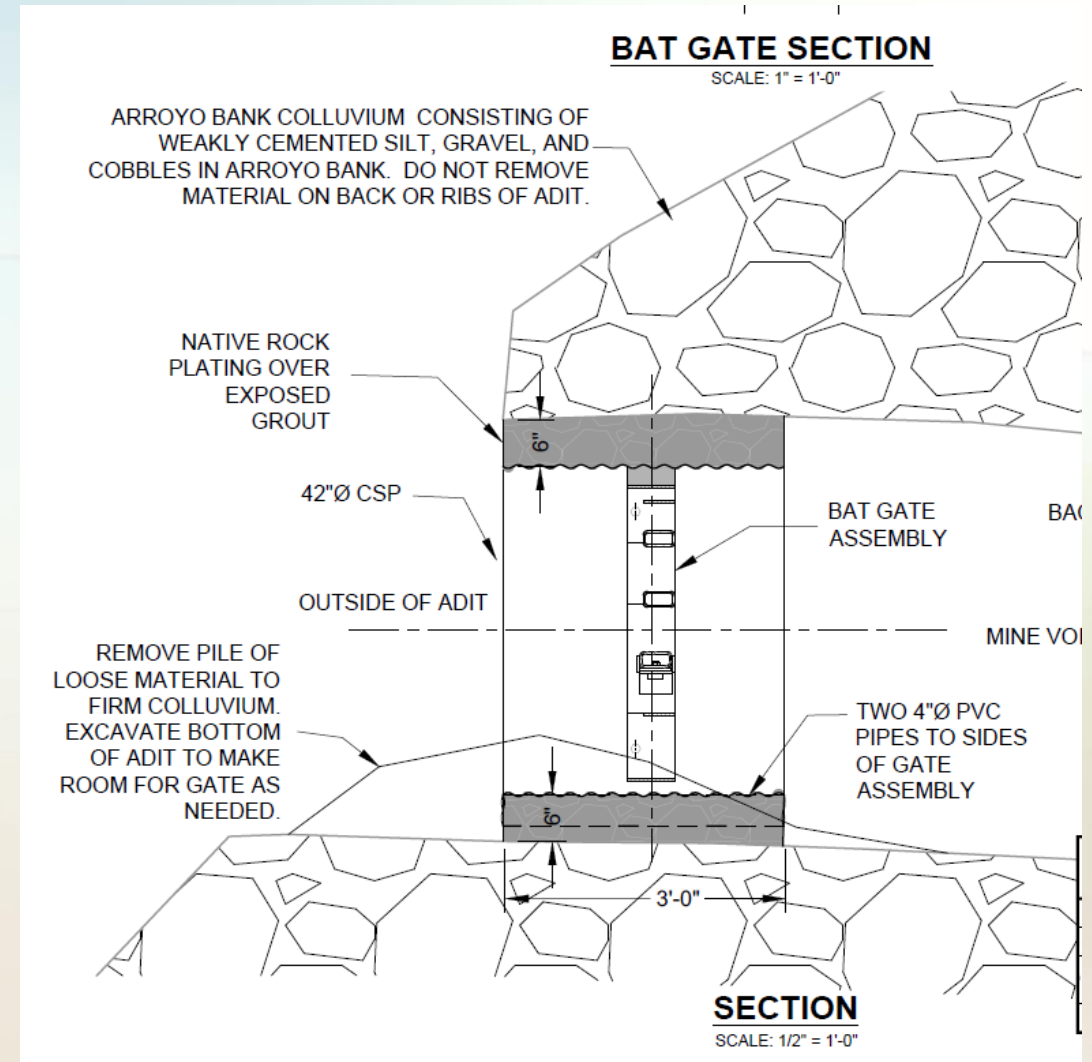
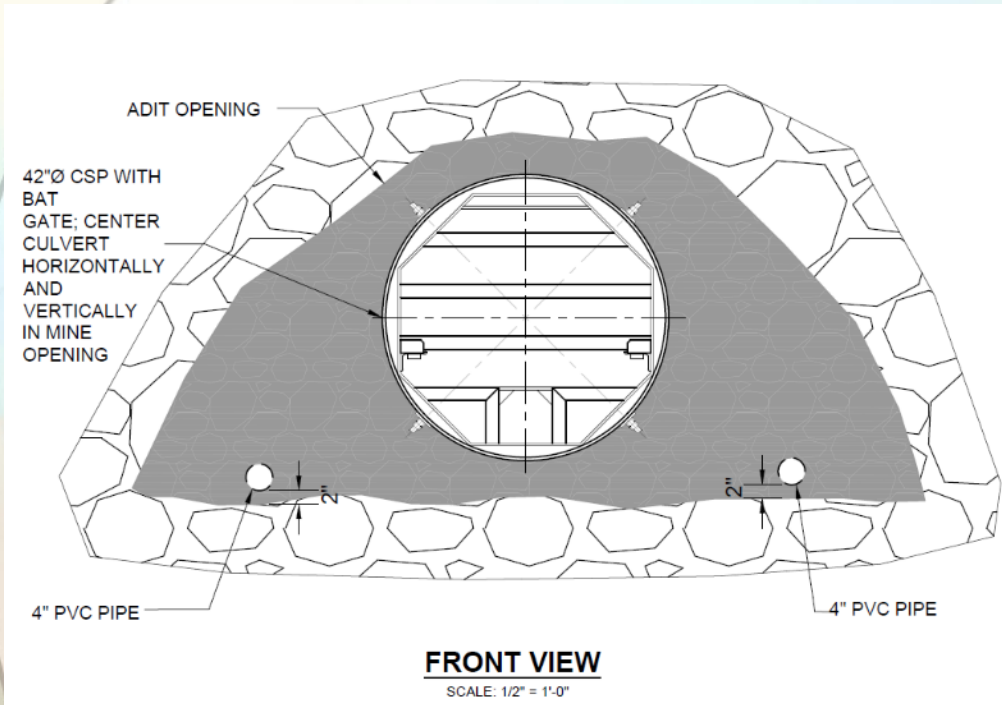
Adit G-25



Adit G-27



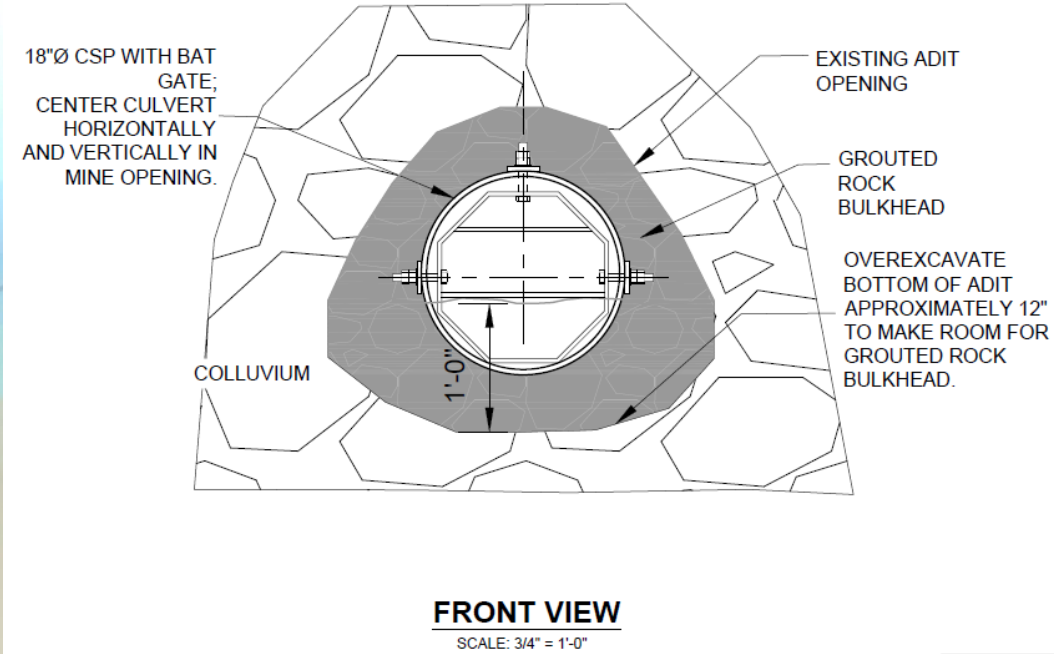
SOW: Horizontal Culvert, Bat Gate, Rock Bulkhead



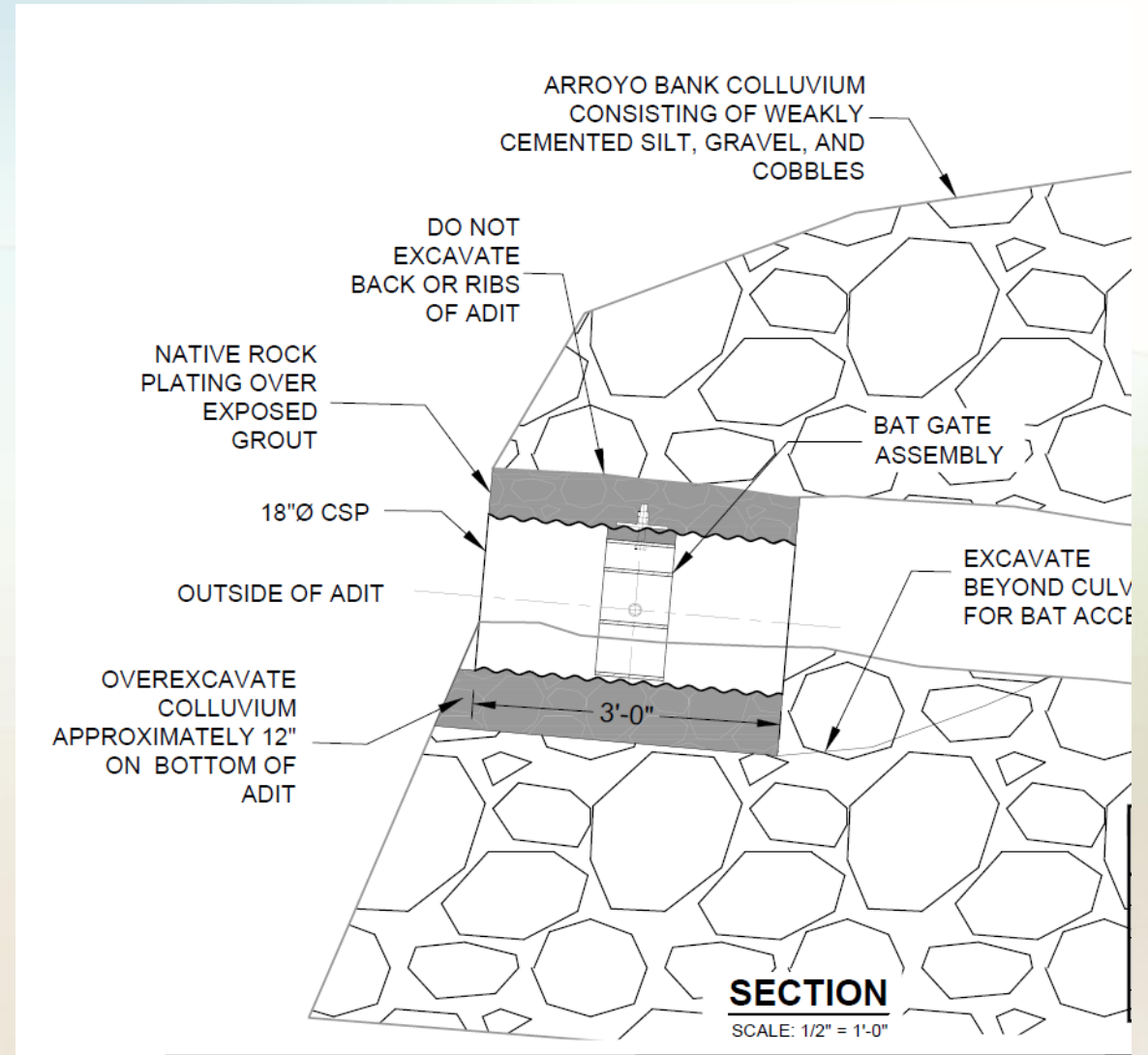
Adit G25

- Removeable locking bar

SOW: Horizontal Culvert, Bat Gate, Rock Bulkhead



Adits G26 & G27



SOW: Horizontal Culvert, Bat Gate, Rock Bulkhead



Example:
Bradley Group
Project



Example:
Cookes West
Phase IIIA
Project

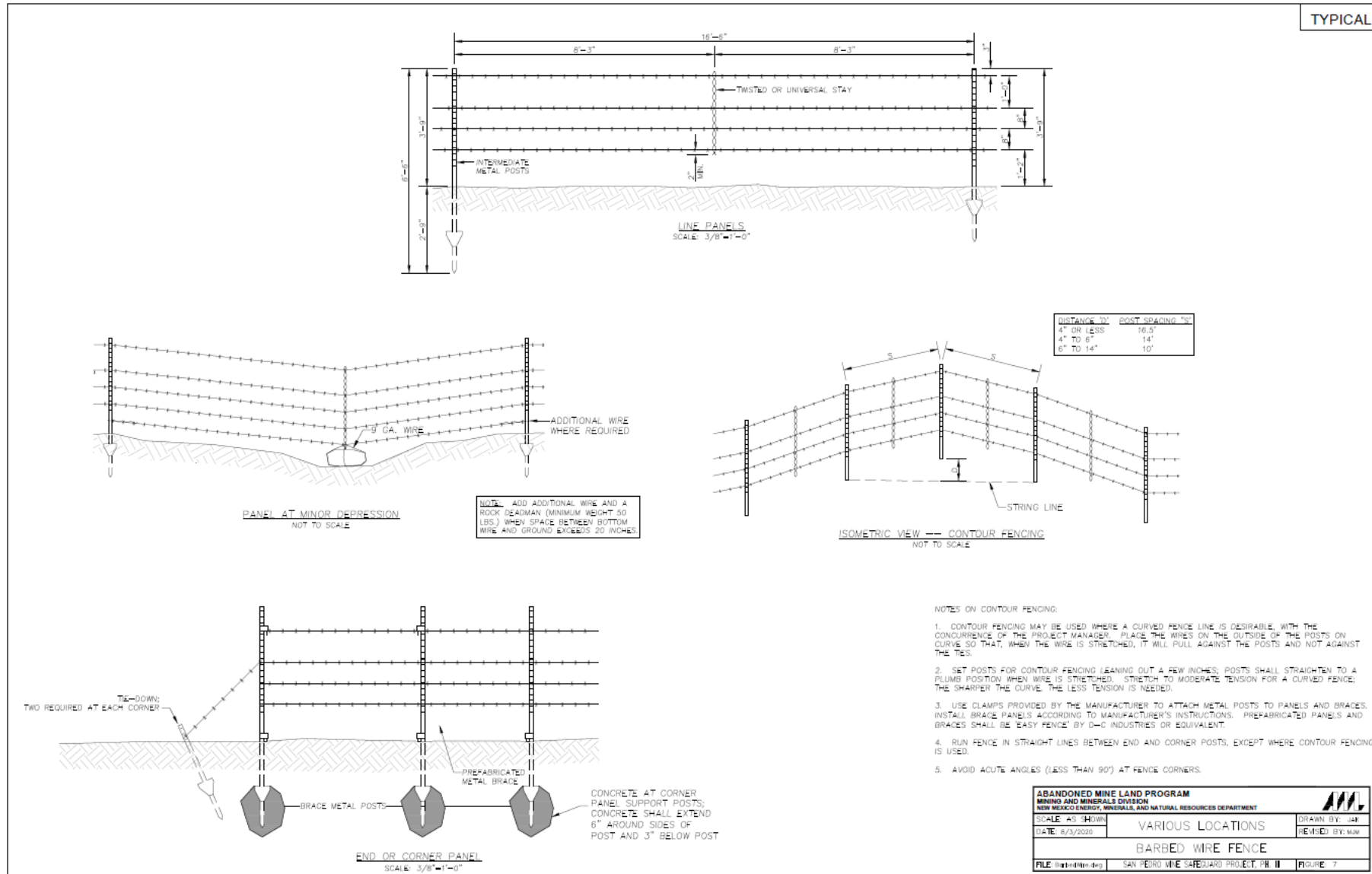
SOW: Barbed Wire Fencing



Features G63 & G68



SOW: Barbed Wire Fencing



SOW: Capping Vertical Pipe



Feature G39

8" ID

8.5-8.75" OD

93' Deep

SOW: Seeding of Disturbed Areas

Table II – SEED MIX
San Pedro Mine Safeguard Project – Phase III

| <u>No.</u> | <u>Species</u> | <u>Scientific Name</u> | <u>Bulk Seed/lb.</u> | <u>Percent of Total Mix</u> | <u>Application Rate lbs. seed /Acre</u> |
|---------------|---------------------------|---|----------------------|-----------------------------|---|
| 1. | Purple three-awn | <i>Aristida purpurea</i> | 250,000 | 11% | 1.75 |
| 2. | Sand dropseed | <i>Sporobolus cryptandrus</i> | 5,600,000 | 13% | 2.00 |
| 3. | Sideoats grama | <i>Bouteloua curtipendula</i> (var. <i>Vaughn</i>) | 159,200 | 9% | 1.50 |
| 4. | Blue grama | <i>Bouteloua gracilis</i> | 135,000 | 32% | 5.10 |
| 5. | Indian ricegrass | <i>Oryzopsis hymnodies</i> (var. <i>Paloma</i>) | 188,000 | 9% | 1.36 |
| 6. | American vetch | <i>Vicia Americana</i> | 32,833 | 5% | 0.85 |
| 7. | Winterfat | <i>Krascheninnikovia lanata</i> | 123,000 | 13% | 2.04 |
| 8. | Scarlet globemallow | <i>Spharealcea coccinea</i> | 500,000 | 5% | 0.85 |
| 9. | Wyoming Indian paintbrush | <i>Catilleja linariifolia</i> | 4,915,000 | 3% | 0.55 |
| Totals | | | 100% | 16.0 lb/ac | |

- 1 acre
- Broadcasting or Hydroseeding

Outline

- Summary of Bid (Mark Lujan)
- AML Program Overview (Meghan McDonald)
- Project Location and Access (Laurence D'Alessandro)
- Summary of Work (Meghan McDonald)
- **Conclusion (Meghan McDonald)**

Important Dates and Reminders

- Bidders must acknowledge amendments or else submittal will be deemed UNRESPONSIVE
- Questions Due: October 16, 2020
- Answers Due: October 21, 2020
- Last Amendment Deadline: October 23, 2020
- **Bids Due: October 30, 2020 by 2:00 P.M. MDT**

Optional Site Visit



- **Date:** Tuesday October 13, 2020
- **Time:** TBD (contact Meghan McDonald to arrange)
- **Meeting Location:** Henderson Store, State Highway 14, Golden, NM, 87047
- The site visit will follow all current restrictions including group size, social distancing, and personal protective equipment. As of 6/17/2020, this includes limiting each group size to five (5) people, wearing a face covering at all times, and maintaining a six (6) foot distance between individuals.

Questions?

- Verbal responses to questions will not be binding
- All questions regarding this ITB MUST be submitted in writing to:
- **Mark.Lujan@state.nm.us**

Thank you!