

LUNA (WUI # 167)
COMMUNITY WILDFIRE PROTECTION PLAN
A Supplement to the
CATRON COUNTY
COMMUNITY WILDFIRE PROTECTION PLAN



A Continuing Effort
by and for the Citizens of Catron County, New Mexico

Ed Wehrheim, Chairman, Catron County Commission
Don Weaver, Coordinator, Catron County CWPP Core Group
in partnership with the New Mexico State Forestry Dept. and Catron County Rural Fire Departments

Assisted by the San Francisco Soil & Water Conservation District, the U.S. Forest Service, the US Bureau of Land Management, Southwest Center for Resource Analysis at Western New Mexico University, University of New Mexico, and Northern Arizona University School of Forestry.

ACKNOWLEDGEMENT

This supplement to the Catron County Wildfire Protection Plan for the Luna Wildland Urban Interface was largely made possible through the New Mexico Association of Counties Wildfire Risk Reduction Program. This grant is financed by the Bureau of Land Management. This grant provided for writing of this plan and completion of demonstration projects. Also the cooperation in particular of the Gila National Forest, New Mexico State Forestry, Catron County Commission and Luna Volunteer Fire Dept. was invaluable and much appreciated. Without exception all personnel in all these agencies and organizations were most cooperative and helpful.



SIGNATURES

DECLARATION OF AGREEMENT AND CONCURRENCE

The following partners in the development of this Community Wildfire Protection Plan have reviewed and do mutually agree or concur with its contents:

Ed Wehrheim, Chairman, Catron County Commission	Date
---	------

Doug Boykin, Forester, New Mexico State Forestry Department	Date
---	------

Loyd Jackson, Fire Chief, Luna Volunteer Fire Department	Date
--	------

Zina Day-McGuire, Catron County Wildfire Prevention Coordinator and Fire Chief, Wild Horse Volunteer Fire Department	Date
---	------

Concurrence

Janice Stevenson, District Ranger, Quemado	Date
--	------

TABLE OF CONTENTS

Acknowledgement.....	2
Signatures	3
DECLARATION OF AGREEMENT AND CONCURRENCE	3
Table of Contents	4
Executive Summary	5
Introduction.....	5
Overview:.....	5
Future Desired Condition and Relevant Fire Authorities	6
Relevant Authorities	6
Planning Area Boundaries	6
Planning Process	6
History	6
Collaboration.....	6
Methodology	7
Public Involvement.....	7
Community Profile	8
WUI Description	8
Planning for the Future.....	12
Recap Of Objectives.....	12
Implementation/Mitigation	12
Appendix Volume 2	17
Table: Vegetation Types.....	18
Table: Community Subdivision Ratings of Various Attributes by Fire Dept.....	19
Subject List from Table Contents for Catron County CWPP	21
Subject List from Table Contents for Catron County CWPP, Appendix Volume 2.....	22
Appendix Volume 3	23
Map 1: Steepness of Slopes	24
Map 2: Vegetative Type Groups	25
Map 3: Land Ownership	26
Map 4: Threatened and Endangered Species	27
Map 5: Fire Threat.....	28
Map 6: Fire Regime Condition Class	29
Map 7: FRCC Abundance Class	30
Map 8: FRCC Risk of Vegetative Condition Not Being Sustainable	31
Map 9: Machine Accessible Areas.....	32
Map 10: Final Treatment Priorities	33
Map 11: WUI Relative to HUC 6 Watersheds.....	34
Map 12: Treatment Priority by HUC 6 Watershed	35
Map 13: Regap Vegetation Types	36
Map 14: Proposed Mitigation Priorities	37

EXECUTIVE SUMMARY

The Luna Community Wildfire Protection Plan (CWPP) is a supplement to the Catron County Community Wildfire Protection Plan. The County CWPP completed in October, 2005 assesses the wildfire threat and hazardous fuels treatment priorities on a landscape scale. The Luna CWPP uses the data and findings of the County CWPP to assess the wildfire threat and treatment priorities specific to the Luna Wildland Urban Interface (WUI) (#167). Mitigation which will reduce the threat of wildfire damage to property, life and the land are proposed. Project scale data from the County CWPP and other sources is presented to aid in planning and design of the proposed projects.

INTRODUCTION

Overview:

The Luna WUI #167 includes 26,054 acres in the Luna valley along the San Francisco River and some valley areas to the north. Gila National Forest and private land is included within the boundaries. There are 201 E911 address sites recorded for this WUI which includes private homes, businesses, a US Forest Service administration site and miscellaneous buildings. The Ditch USFS campground is located on the west end of the WUI. Because of the higher concentration of homes and businesses and the density of some of the surrounding ponderosa pine and pinyon/juniper, the Luna WUI rated third priority for treatment out of the 196 WUI areas in the County.

The County CWPP contains a thorough presentation of how determinations of values at risk, risk of occurrence and fire threat were used to locate the areas and values most at risk from catastrophic wildfire in the County and to prioritize treatment needs. Please refer to the County CWPP for more information. It is not the intent of this plan to duplicate the County CWPP. The general outline of the County CWPP is followed in this CWPP.

Goals And Objectives

As a supplement to the County CWPP, the main objective of the Luna CWPP is to propose work needed to reduce and mitigate fire threat. To accomplish this objective this supplement continues the collaboration started in the County CWPP, coordinating the needed work with past efforts, the various land owners and other interest.

Future Desired Condition and Relevant Fire Authorities

The desired condition for WUI areas as stated in the County CWPP is obtainable: "The desired condition for WUI areas is a fire safe environment around protected improvements that will provide "defensible space" for firefighters in the event of a wildfire in the surrounding area". There is some high fuel loading, but not as many complicating factors such as high elevation forests, steep slopes, Wilderness and Roadless Study areas and environment concerns such as the Mexican spotted owl as there are in some of the WUI areas in the County. There is an excellent opportunity to obtain the desired condition for this WUI area.

Relevant Authorities

No supplement to the County CWPP necessary.

Planning Area Boundaries

No modifications were made in the WUI boundary as established in the County CWPP.

PLANNING PROCESS

History

Luna proper having first settled in the late 1800's is among the older communities in the County, however in the last 10-15 years considerable subdivision of land and building of new homes has occurred. Though the area is now quite accessible by highway 180, it hasn't always been so. The only connecting link between Luna and Reserve was the "Mail" trail over Luna divide for many years. The phone line to Luna was only a no. 9 wire strung through the trees as recent as the late 1970's'. Cattle ranching and logging has been the main stay of the community.

Except for the steeper areas, ponderosa pine areas on the National Forest in and surrounding the Luna WUI has been commercially harvested several times. There have been numerous non-commercial treatments also such as pre-commercial thinning and prescribed burns.

Collaboration

Besides the meetings held around the County and one meeting at Luna Fire Dept. for the County Wildfire Protection Plan on June 21, 2007, the Quemado Ranger District of the Gila National Forest has had extensive contact with the private land owners concerning treatment needs and proposed projects. There has been several meetings with Quemado Ranger District to coordinate the writing of this plan. Comments from all these meetings

and contacts were incorporated in a rough draft. Comments on the rough draft were incorporated in a draft which was sent out for a last review by the involved agencies before the final was signed.

Methodology

Most of the data used for this CWPP is from the County CWPP and was scaled to fit this WUI. Although the County CWPP was a landscape scale analysis, much of the data originated at a scale that fits the purpose of this CWPP (30x30 meter satellite imagery for example).

Public Involvement

See Collaboration section above.

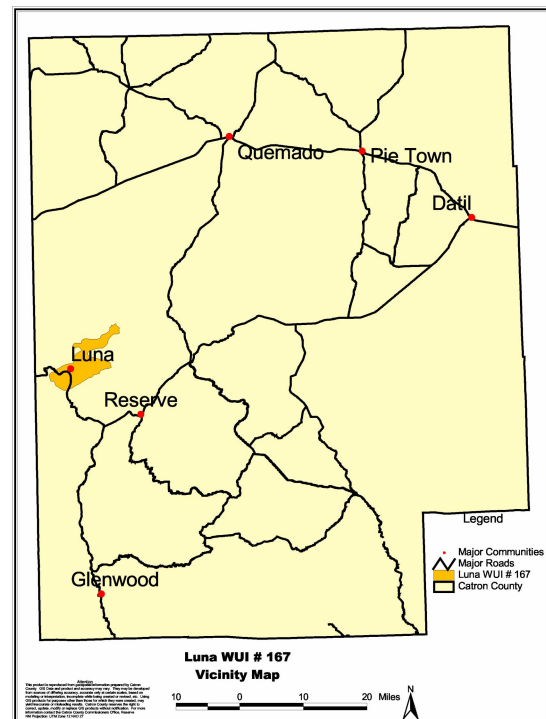
COMMUNITY PROFILE

WUI Description

The Luna WUI area is about 15 miles northwest of Reserve and about 3-4 miles east of Arizona/New Mexico state line. Access to the area is best over US Highway 180. Most of the land is National Forest (75%). The WUI is within the Quemado Ranger district on the Gila NF.

Elevation in the WUI ranges from 6680 ft. on the east side to 7800 ft. on the west side so the area straddles the transition zone between ponderosa pine and pinyon/juniper types. As can be seen in the table below over ½ of the ponderosa pine area is in a "closed" canopy condition. It is believed that the amount of ponderosa pine is over estimated and the amount of grassland is under estimated by the re-regap satellite data. Some of the sparse tree/grassland areas are classed as ponderosa pine in regap whereas normally they would be classed as grassland, especially from the

standpoint of expected fire behavior. See maps for Forest Type, Structural Stage and Regap Cover Types.



Luna WUI (#167) Priority 7.55
Machine Accessibility by Ownership, Cover Type and Density

Machine Accessible	Owner	Acres by Cover Type and Density							Grass/ Shrub Other	Total
		Ponderosa Pine Open	Ponderosa Pine Closed	Mixed Conifer Open	Mixed Conifer Closed	Pinyon Juniper Open	Pinyon Juniper Closed			
no	FS	478	556	11	97	534	119	28	1,822	
no	PVT	19	22	0	0	20	10	0	71	
yes	FS	5825	6437	3	22	3454	564	1377	17,682	
yes	PVT	1,279	2,287	0	2	585	64	2,261	6,479	
	Totals	7,602	9,302	14	120	4,593	758	3,666	26,054	

Closed Density Summary

Machine Accessible	Closed
no	804
yes	9,376
Total	10,180

Fire Regime Condition Class (FRCC) within the WUI boundary is 61% class 2, 33% class 1 and 6% class 3. This means that about 2/3 of the WUI is in a dense existing condition of the vegetation. More information on FRCC can be found in the County CWPP. Briefly, fire regime condition class is a classification of the amount of departure from the natural regime. The three classes for FRCC are:

1. Low, class 1, <=33% departure
2. Moderate, class 2, >33% to 66% departure
3. High, class 3, >66% departure

FRCC mapping of the abundance classes shows that about 1/3 (33%) of the Luna WUI area is rated high, about 1/3 is rated similar and about 1/3 is rated rare. Abundance class is a slightly different view of FRCC and is the amount of a vegetation-fuel class compared to the reference condition amount, classified into rare, similar, moderate and high. The management implications are to recruit more of the rare, maintain the existing rare and similar and reduce the moderate and high until theoretically all is "similar".

1. Rare, < -25% difference
2. Similar, > -25% and < +25% difference
3. Moderate, >= +25% and <= +75% difference
4. High, > +75% difference

FRCC mapping of the risk classes shows about 1/3 of the area in each of the three classes high, moderate and low. The risk of a vegetative condition not being sustainable is shown by risk class which is an index based on the difference of vegetation-fuel class amount from the reference amount. Classified into low, moderate and high, it indicates the level of key ecosystem component risk of sustainability from unplanned disturbances, such as wildfire. The management implications are to reduce the amount of high and moderate risk to sustainability and maintain the low risk areas.

1. High, < -75% or > +75% difference
2. Moderate, -25% to -75% or +25% to +75% difference
3. Low, -25% to +25% difference

Luna WUI #167
Fire Regime Condition Class Mapping Summary

	Class	Acres	% of Total	Total Check
FRCC	0(null)	4	0	26,054
	1	8,645	33	
	2	15,811	61	
	3	1,594	6	
			100	
Risk	Null	4	0	26,054
	Low	9,161	35	
	Moderate	8,330	32	
	High	8,559	33	
			100	
Abundance	Null	4	0	26,054
	Rare	7,384	28	
	Similar	9,161	35	
	Moderate	996	4	
	High	8,509	33	
			100	

In the County CWPP, slope steepness was mapped in 4 classes. The area of each slope class in this WUI is as shown in the following table. Also see map Slope % Classes.

Luna Wui #167
Percent Slope Summary

Slope %	Acres
0-10	13523
11-25	6228
26-35	5096
>35	1207

Fire threat was modeled and mapped in the County CWPP to rate the fire threat within each WUI area as compared to the fire threat in other WUI areas. The Luna WUI is rated mostly high and moderate fire threat. See map for Fire Threat.

Past occurrence of lightning and man-caused fires was mapped and considered in determining treatment priorities in the County CWPP. This WUI was mapped at about ½ high and ½ moderate lightning risk and nearly all high human risk. See Map 6, "Risk of Human and Lightning Caused Wildfire" in the County CWPP.

Treatment priority was modeled and mapped in the County CWPP to rate the treatment priority within each WUI area as compared to the treatment priorities in other WUI areas and also to show a weighted average of the treatment priority ratings within each WUI. The weighted average treatment priority places the Luna WUI as third in need for treatment out of 196 WUI areas in the County. The Luna WUI is mostly in the top 1/3 priority for treatment. See map Treatment Priorities. There are other consideration on determining treatment priorities not considered at the County CWPP landscape scale. One of these considerations is proximity to endangered structures. There is a need for some balance between treatment priorities as determined in the County CWPP and other concerns about priority such as proximity. In determining the priority of proposed

projects in this plan, the priority generally decreases with increased distance from the value at risk.

There are two Threatened and Endangered species in this WUI (as per County CWPP), bald eagle stream habitat and one Leopard frog site. Mexican spotted owl critical habitat and management areas border the WUI and only cross the boundary in a couple spots for a very small amount of acres. Threatened and Endangered species was considered as part of the other values at risk in the modeling of treatment priorities. The NEPA process will need to deal with the restrictions, guidelines and protection of those species. It is not within the scope of this plan to resolve the conflict between the actions needed to return the vegetation to a more natural condition and the restrictions meant to protect species by preserving the existing condition.

Recreational use, after homes and businesses, is by far the most important human use of this area and is an important contributor to the economy of the County. Recreational use was rated over the County in the County CWPP. Recreational Use was rated above average for most of the area in the Luna WUI. See map Recreational Use for the ratings in this area as compared to the remainder of the County.

There are presently 201 addresses recorded in the County E911 address GIS records. All structures except the USFS administrative site are located on about 6545 acres of private land. Safe evacuation in the event of a fast moving wildfire burning under high or extreme fire danger would be possible with proper planning and implementation, however in some cases the margin of safety is small and needs to be improved. There is not many "dead-end road" and no escape zone" situations. See appendix table "Community Subdivision Ratings of Various Attributes by Fire Dept."

"The Ditch", a developed USFS campground, is on the west end of the WUI. Development in the campground consists of small toilet buildings and tables with parking spots.

This WUI is within several HUC 6 watersheds with 1 State 303d listed water body.

Fire protection services are supplied by the Luna Volunteer Fire Dept. and the Forest Service, Quemado Ranger District. The Luna Fire Department provides structure and wildland urban interface fire coverage for the entire WUI area but realistically the areas in the northern portion out of the Luna WUI do not have effective structure fire protection because of the distance. The residences on the north end are too few to support a volunteer fire dept. of their own. Defensible space for most of the structures already exists or can be improved upon with some reduction in fuels. Water sources are fair in the Luna valley portion of the WUI but poor in most of the northern half of the WUI. There has been no structure vulnerability surveys completed in this WUI. See appendix table "Community Subdivision Ratings of Various Attributes by Fire Dept.". Also see appendix table "Fire Dept. Inventory". Water sources, wildland firefighting safety and numbers of volunteer members are concerns. The Quemado Ranger District of the Gila National Forest provides wildland fire protection in the area. Availability of

resources depend on the severity of the fire season, time of year and priorities (Forest, Regional and National).

PLANNING FOR THE FUTURE

Recap Of Objectives

The objectives of the Catron County Community Wildfire Protection Plan were:

- Create a county-wide, landscape level plan
- Locate the highest areas at risk from catastrophic wildfire in the County
- Prioritize these areas based on the values of the citizens of the County
- Suggest mitigation actions for the protection of life, property, critical infrastructure and wildlands in the County, based on
 - Optimum treatment efficiency
 - Lowest treatment cost
 - Highest benefit to local economy
- Follow-through to on-the-ground level by developing local Wildfire Protection Plans for implementation of objectives of this County-wide Plan

The objective of the Luna Community Wildfire Protection Plan is to propose work needed to reduce and mitigate fire threat.

Implementation/Mitigation

Several mitigations are proposed to reduce and mitigate fire threat within the Luna WUI and are summarized in the following 2 tables. Mitigation needs are listed by priority in the first table and are as shown on Map 14: Proposed Mitigation Priorities in Appendix Volume 3. Proposed mitigation projects are listed in the second table.

Mitigation Needs by Priority for the Luna WUI (# 167)

Last update: 3/27/07 DRW

MITIGATION PRIORITIES

No.	Mitigation Name	Owner	Description of Needs
Fuel Hazard Reduction			
1	SW 180	NF	Commercial, precommercial thinning, prescribed burn
2	SE 180	NF	Commercial, precommercial thinning, prescribed burn
3	SW Luna	PVT	thin, pile/burn, chip
4	W FR 19	NF	Commercial, precommercial thinning, prescribed burn
5	South Central Ridge	NF	Commercial, precommercial thinning, prescribed burn, fuelwood
6	NE Forest	NF	prescribed burn
7	North Central	NF	Commercial, precommercial thinning, prescribed burn
8	NE Valley	PVT	thin, pile/burn, chip, prescribed burn
9	North Luna	PVT	thin, pile/burn, chip
10	Central Valleys	PVT	some thin, pile/burn, chip, mostly prescribed burn
11	SE Luna	PVT	thin, pile/burn, chip
Fire Suppression/Prevention			
1	Pvt. Owner Education		CWPP, firewise
2	Evacuation procedures		Revision/update of Evacuation Plan, training of VFD
3	Fire Department		improve water supply and delivery, wildland fire training

Project Accomplishments for the Luna WUI (# 167)

Last update: 3/27/2007

PROJECTS

Mitigation Priorities Included	Name or Description	Status and Remarks	Plan Acres	Accomplishment			
				CY	Fire Acres	CY	Other Acres
Fuel Hazard Reduction Projects							
5, 6, 8	East Centerfire	NEPA done for prescribed fire, to include N end pvt land in 8 under State agreement.(Quemado RD)					
All NF	Luna	Restoration analysis planned, 64,000 ac. total (Quemado RD)					
1	Luna Fuel Break	S of NW portion of 3, thinned, piled, burned <9", 2001-3 (Quemado RD)	80	2002	80	2001	80
3	SW Luna	thin, pile/burn/chip or remove slash on PVT south side, highest priority at west end of Luna. Recommend meadow maintenance on south piece of PVT as will avoid future loss of fuels break. (State and County coord.)	70				
4	NW Luna	commercial harvest, thinning on ridge tops (Quemado RD) Part of Restoration					
4	NW Luna Burn	prescribed burn (Quemado RD) Part of Restoration					
7	North Central	commercial harvest, thinning (Quemado RD) " " "					
7	North Central Burn	prescribed burn (Quemado RD) Part of Restoration					
9	North Luna	small amount of thinning with pile/burn/chip or removal of slash possible but fairly low priority (State and County coord.)	50				
10	T. Patterson	thinning, burning desired by land owner (State and County coord.)					
10	A. Patterson	thinning, burning needed, (State and County coord.)					
11	SE Luna	small amount of thinning possible along south bndy of PVT land. (State and County coord.)	10				
Fire Suppression/ Prevention Projects				Year Completed			
all	Luna Station Water Supply	Over head tanks, emergency power generator, Improvements in planning stages (VFD and County coord.)	NA				
all	Water Supply	new Well (VFD and County coord.)	NA				

all	Fire Alarms	Additional siren at other location, exercise schedule for sirens (VFD and County coord.)	NA	
all	Evacuation Plan	Revision/update of Evacuation Plan, training of VFD, (VFD, County and State coord.)	NA	
all	Public Education	Ongoing contact with PVT owners on firewise, assistance programs, CWPP, treatment needs (VFD, County and State coord.)	NA	
all	Wildfire Training	Ongoing opportunities for training.(VFD, County and State coord.)	NA	
all	Slash Disposal	Need Official slash disposal site other than the rodeo grounds where slash is being disposed of now	NA	

The above priorities are subject to change for numerous reasons such as funding limitations, kind of funding, fire use and wildfire. The above table will be updated as needed to reflect current priorities and proposals. The proposed mitigation may be implemented in stages, split up, or combined to form projects either entirely or partly within the WUI.

Funding for the above proposed mitigation will be coordinated between the Forest Service, County and State Forestry.

**LUNA
COMMUNITY WILDFIRE PROTECTION PLAN**

APPENDIX VOLUME 2

Data

**Supplement to the
CATRON COUNTY
COMMUNITY WILDFIRE PROTECTION PLAN**

Table: Vegetation Types

Luna WUI
Crosswalk with CWPP Vegetation Typing
Reference Condition Composition per Cover Type

Cover Type Values						PNV/GIS Code	Precent Composition			Acres	
Regap class	CWPP class	PNVG	Cover Type	0-24 Value	Base 3 Value		Early	Open	Closed		
30	MC	MCAN	S032	22	2.7500	340	10	80	10	3	
32	MC	MCAN	S034	21	2.6250	340	10	80	10	133	
Mixed Conifer Totals and Weighted Average=								10.00	80.00	10.00	135
36	PJ	PLME2	S039	13	1.6250	322	2	67	31	5327	
64	PJ	PLME2	S075	9	1.1250	322	2	67	31	26	
Pinyon/Juniper Totals and Weighted Average=								2.00	67.00	31.00	5,353
33	PP	MAME	S035	24	3.0000	310	5	75	20	1	
34	PP	PPIN7	S036	23	2.8750	330	15	80	5	16,911	
Ponderosa Pine Totals and Weighted Average=								15.00	80.00	5.00	16,912
51	G/S	CHAP5	S057	3	0.3750	120				40	
67	G/S	PLME2	S079	5	0.6250	322				1,455	
71	G/S	MGRA1	S085	2	0.25	220				297	
76	G/S	PLME2	S090	3	0.3750	322				1,857	
110	Other	WATER	N11	0	0.0000	901				4	
Rock Total and Weighted Average=											3,654

26,055

The above table summarizes information about the regap cover types, relative fire threat and structural stage reference conditions. The column CWPP class shows the grouping of the regap classes into the groups: Ponderosa pine, Mixed Conifer, Pinyon/Juniper, Grass/Shrub and Other. Potential natural vegetation group (PNVG), Cover Type and GIS Code are designators used in various reference information. The 0-24 Value is a relative fire threat value assigned in the County CWPP analysis, i.e. the higher the value the higher the fire threat. The Base 3 Value is the 0-24 Value divided by 8. The reference condition is shown in the Percent Composition columns. Weighted average percent compositions are shown for each Cover Type group (except for the Other group). The weighted average is useful since there is most often an intermingled mix of regap classes. The “reference” condition is just that. It is one of the sources of reference information about the condition necessary for reduction of fire threat and sustainable ecological health.

Table: Community Subdivision Ratings of Various Attributes by Fire Dept.

		Rate for Community/Subdivisions Only						Rate Both	Rate for Fire Dept. Only	
Data Entry Units= (See Attribute Definitions)	Protection Need									
	None									
	Low						miles to			
	Mod						nearest	Yes/No	1-10	year
	High	0- 10	0- 10	0- 10	Sum					gallons

Fire Dept.	Community or Subdivision	WUI ID	Evac. Routes Safety Zones	Vulnerability				Fire Station Distance	Evac. Plan/ Struct. Eval.	Applicable ISO rating	Vehicle Avg. Age	Water on Wheels
				R	C	D	Sum					
Luna	Luna Townsite	5s20w34	High				0	0.2	Y/N	9		
Luna	Luna Valley	5s20w34	High				0	10.0	Y/N	10		
Luna										9	1990	

Table: Luna Volunteer Fire Department Equipment Inventory

Year	Make/Model	Type	Tank	FGPM	Purpose	Drive	Feet of Hose Carried									Porta Tank
							Reel	1"	1.5+"	2.5"	3"	4"	5"	Hard Suction	Soft Suction	
1981	GMC	Pumper	750	250	Strucutre	4x4	100	0	200	600	0	0	0	20	0	0
1990	FRHT	Tender	3000	250	Struc/Wild	2x4	0	0	0	0	0	0	0	30		3000/2500
1999	Ford	Brush	250	32	Wildland	4x4	100			100				40		

Subject List from Table Contents for Catron County CWPP

Signatures	Vegetation Cover Type
DECLARATION OF AGREEMENT AND CONCURRENCE	Insects And Diseases
Table of Contents	Values at Risk
Preface	Structures, infrastructure
Introduction	Economic values (business, industry)
Overview:	Wildlife Habitat
Goals And Objectives	Watershed And Wetland Resources
Building together to a common goal	Fire Risk/ Risk of Occurrence
Collaborative assessment of values at risk and protection priorities	Fire Regime Condition Class
Future Desired Condition and Relevant Fire Authorities	Treatment Priorities
Desired condition	Summary of the Analysis Results
Relevant Authorities	Summary of the Analysis Results
Planning Area Boundaries	Planning for the Future
Definitions of areas	Recap Of Objectives
Planning Process	Implementation/Mitigation
History	Environmental Justice
Collaboration	Catastrophic Wildfires and Environmental Justice
Methodology	Prescription Guidelines
First Stage Public Involvement	Hazardous fuels reduction
Analysis: Design of analysis and determination of data needed	Education And Community Outreach
Collection and Preparation of Data	Additional Recommendations
Analysis Model Development	Reduce ISO
Model Validation	Current Projects And Policies
Second Stage Public Involvement	Structure Ignitability
Draft Plan	Funding
Public Comment	Project specific funding
Final Plan	Planning Summary
Community Profile	Monitoring and Evaluation
County Description	Who Will Monitor and Evaluate
Fire Threat	What will be evaluated
	Funding For Monitoring And Evaluation
	Appendix
	Endnotes

Subject List from Table Contents for Catron County CWPP, Appendix Volume 2

Relevant Authorities
Federal
State
County
Village of Reserve
Planning Area Boundaries
Methodology for Establishment of Wildland Urban Interface (WUI) Boundaries
Table - Count of E911 Addresses and Model Value per WUI
Table: Evacuation and Communications Site Model Values per WUI

Planning Process: Table of Partners
Methodology
Public Involvement: Stage One
Brochure
Script for Public Meetings
Analysis
Model Development
Flow Diagram
GIS Data Analysis Methodology
Fire Threat
Table: Fuel Hazard (Fire) Threat Values Crosswalk (sort by regap class)
Table: Acres by Regap Vegetation Data
Table: Vegetation Types
Risk of Occurrence
Values at Risk
Table: Count of Addresses and Model Value per HUC 6 Watershed

Table: Subdivision Data
Table: Community Subdivision Ratings of Various Attributes by Fire Dept.
Column Keys for Table Community/Subdivision Ratings by Fire Dept.

Diagram: Weighting Constants for Analysis Model
Final Determination of Treatment Priority
Treatment Priority Determination by WUI and HUC6 Watersheds

Assignment of Threatened and Endangered Species Values
Table: T&E Species Values
Assignment of Downstream Damage Values
Assignment of Recreation Use Values
Assignment of Water Quality Values
Assignment of Access Values
Machine Accessibility, Determination of Net Acres of Closed Density To Be Treated
SW New Mexico Interagency Fire Regime Condition Class Mapping

Table: FRCC Mapping Summary
Vegetation Species
Insects
Diseases
Noxious Weeds
Fish & Wildlife Concerns/Threatened And Endangered Species
Cultural Resources
Watershed And Wetland Resources
Table: Final Priority Rating Weighted Average per WUI
Table: Final Priority Rating Weighted Average per HUC 6 Watershed

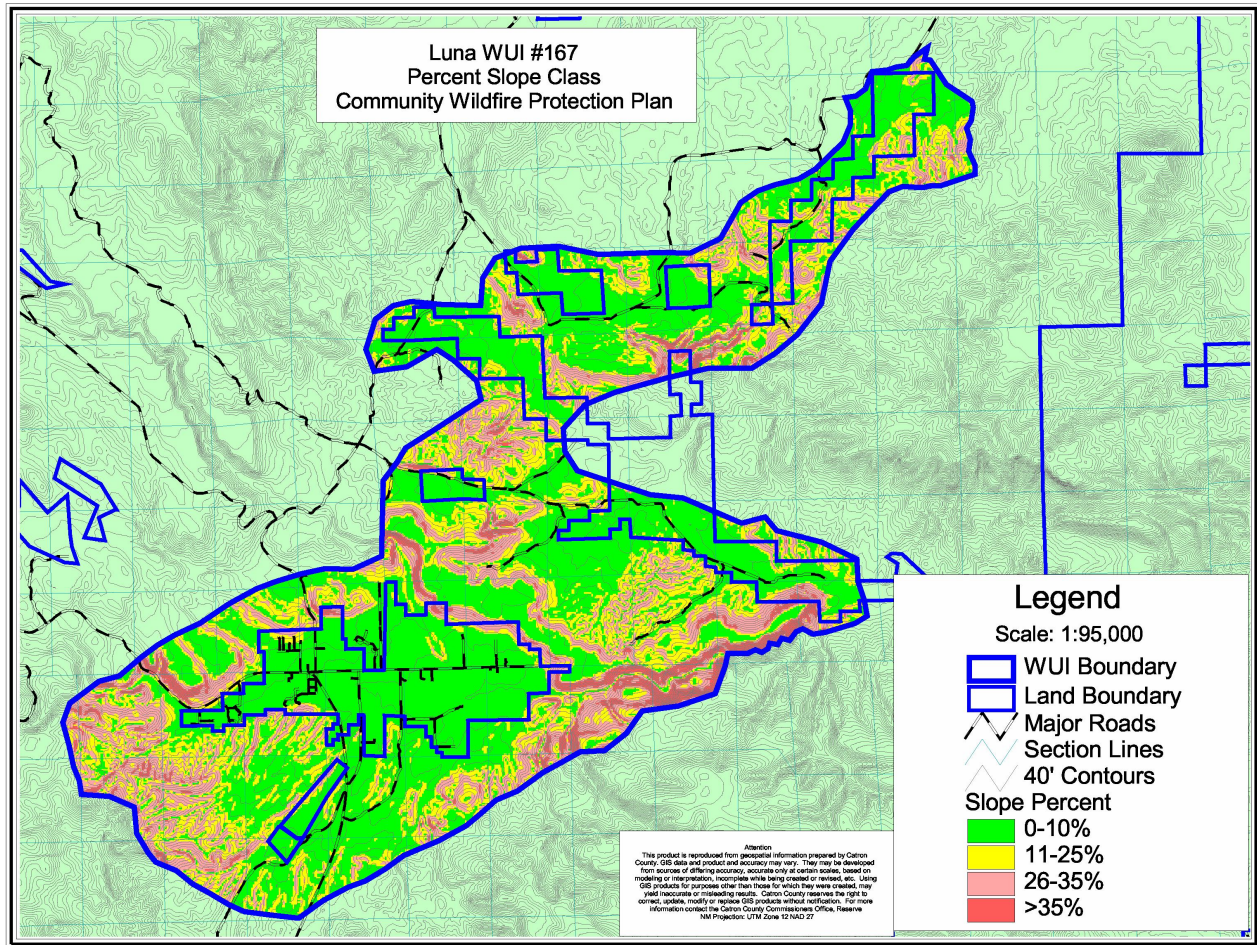
Table: Summary of Various Analysis Results
Individual Data for Eleven Highest Priority WUI Areas
Public Involvement: Stage Two
Public Comments on Final Draft
Treatment Recommendations
Prescription Guidelines
Stewardship Contracting
Monitoring
Rough Draft Monitoring and Assessment Plan (7/8/04 INA team meeting)
Final Plan – letters of approval
Acronym List
Glossary
Bibliography/References

**LUNA
COMMUNITY WILDFIRE PROTECTION PLAN**

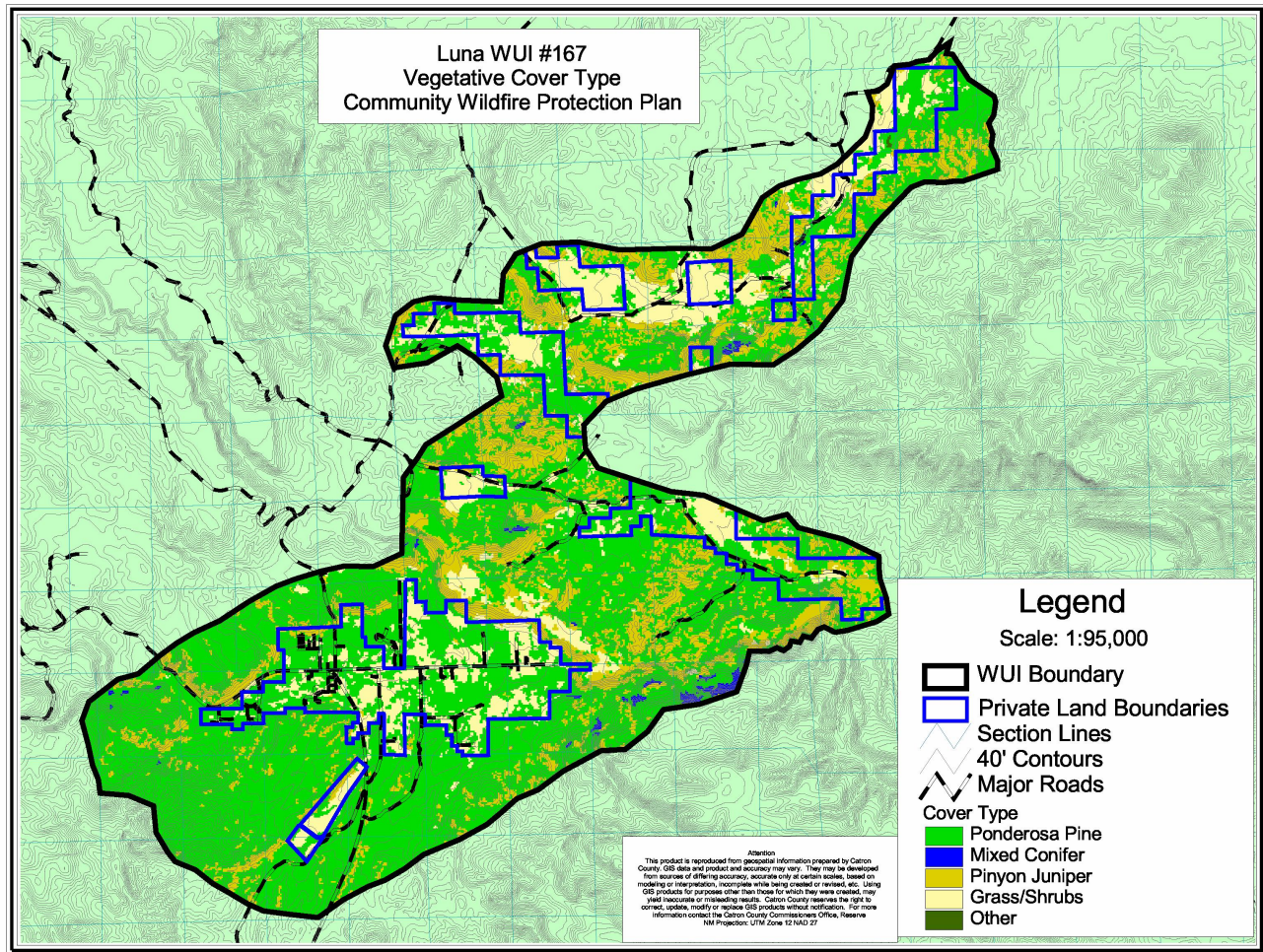
APPENDIX VOLUME 3

Maps

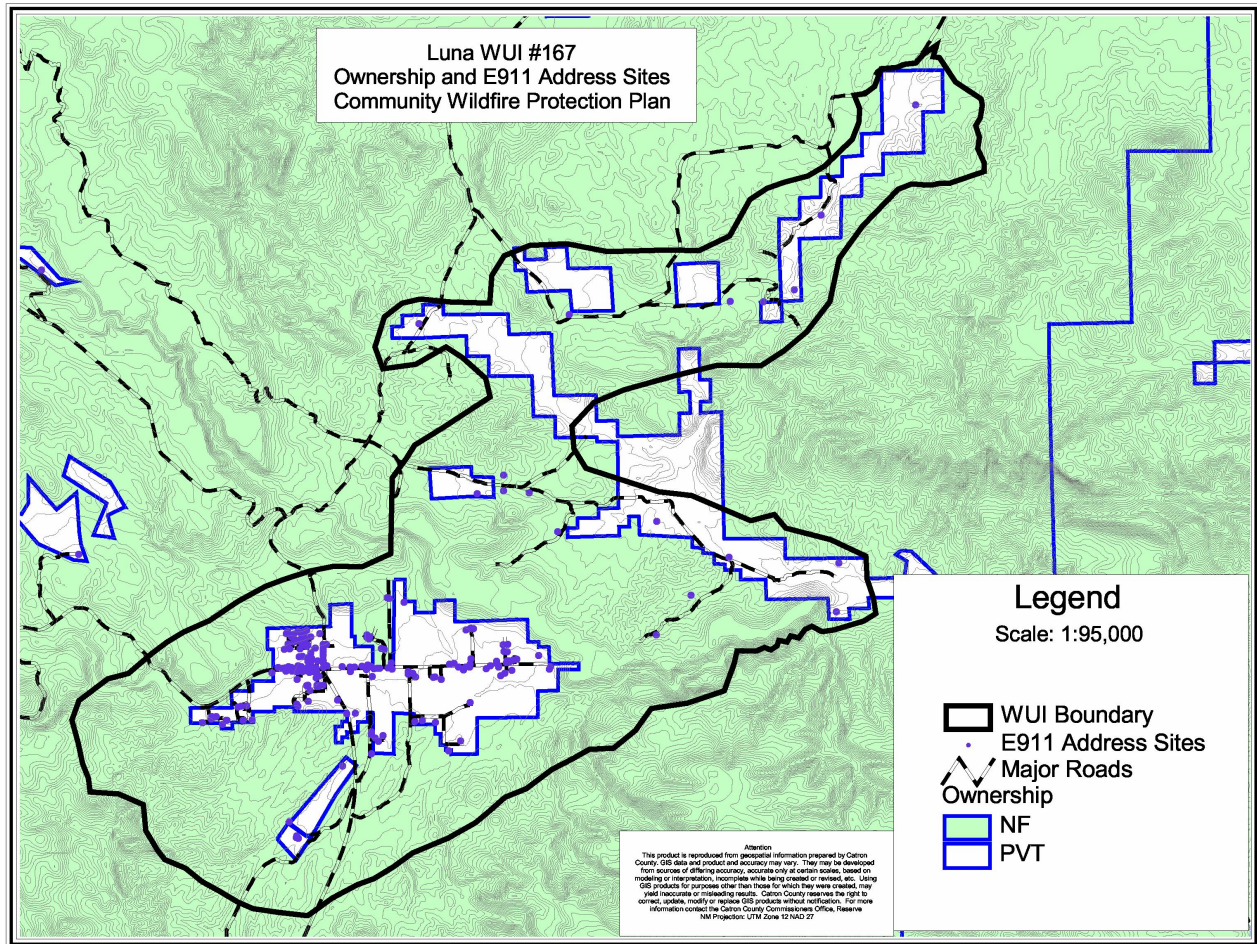
**Supplement to the
CATRON COUNTY
COMMUNITY WILDFIRE PROTECTION PLAN**



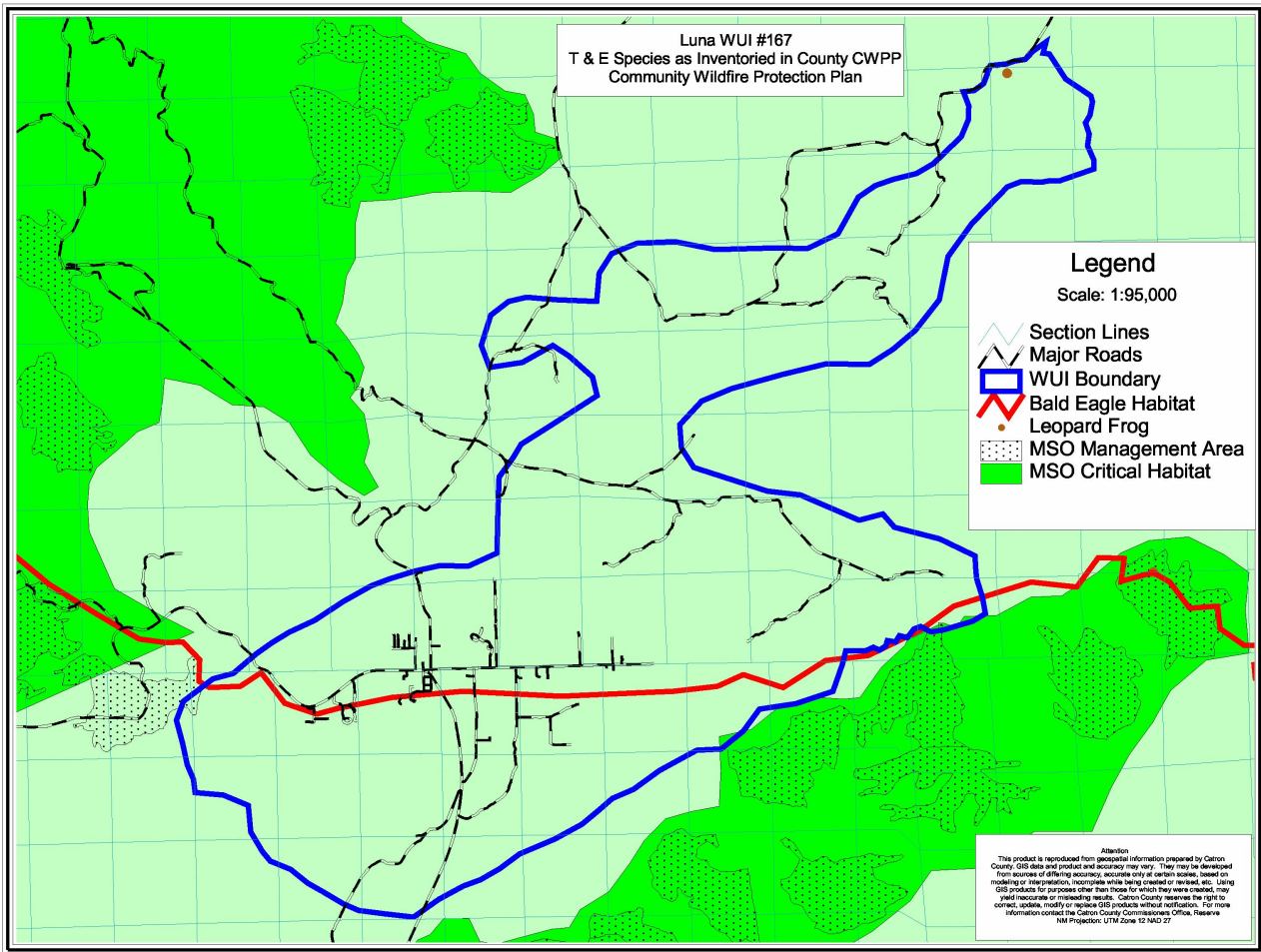
Map 1: Steepness of Slopes



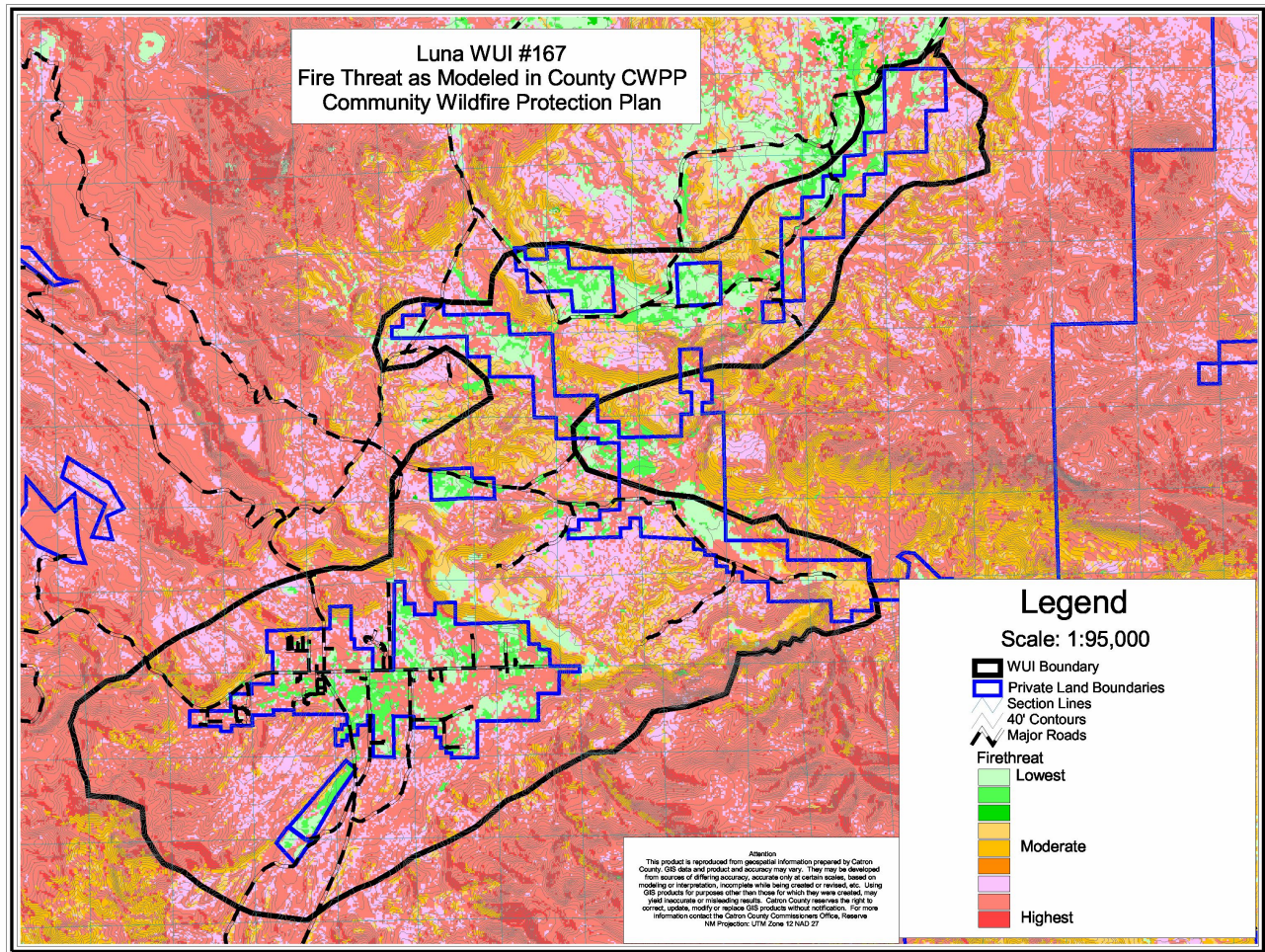
Map 2: Vegetative Type Groups



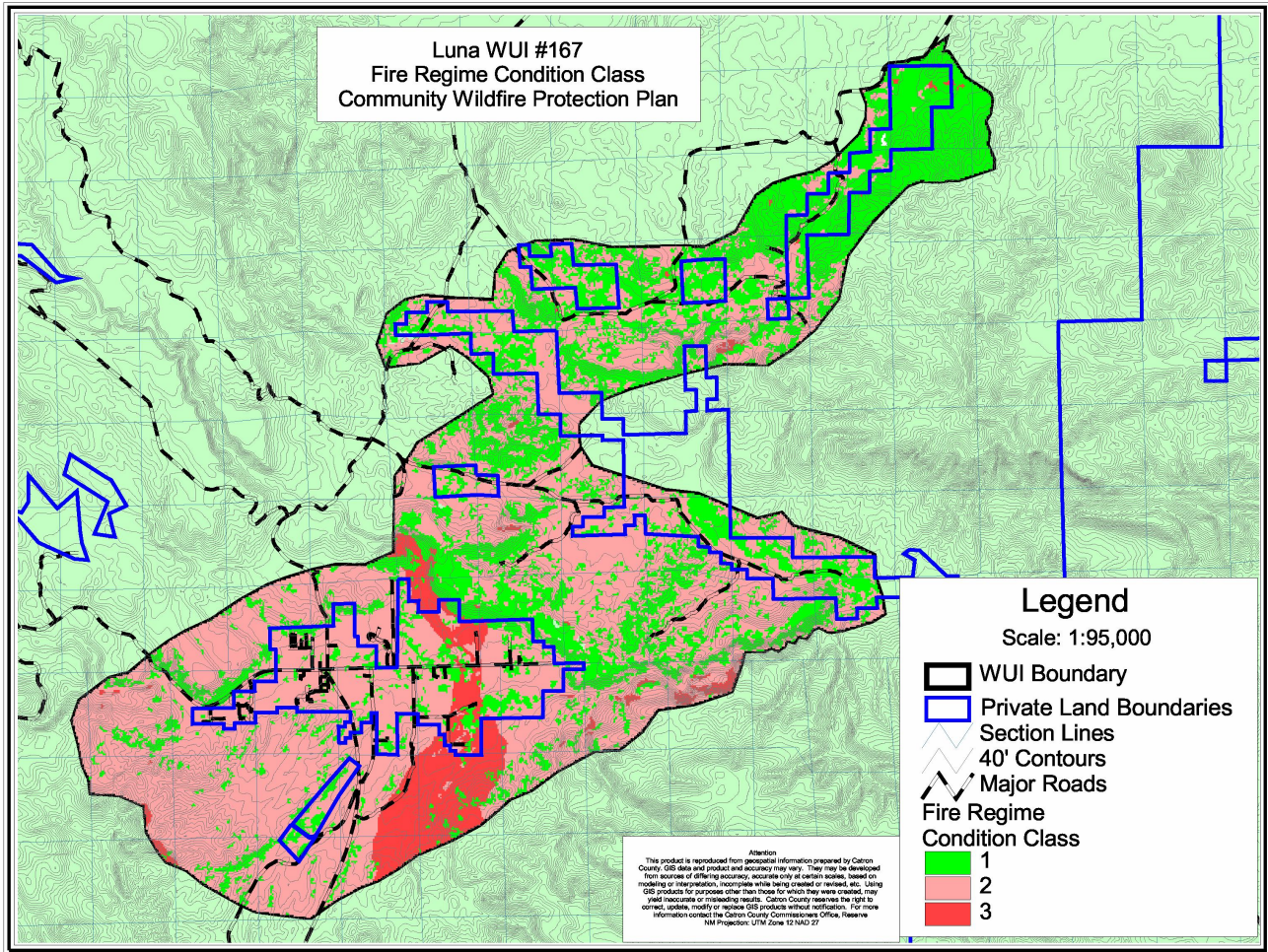
Map 3: Land Ownership



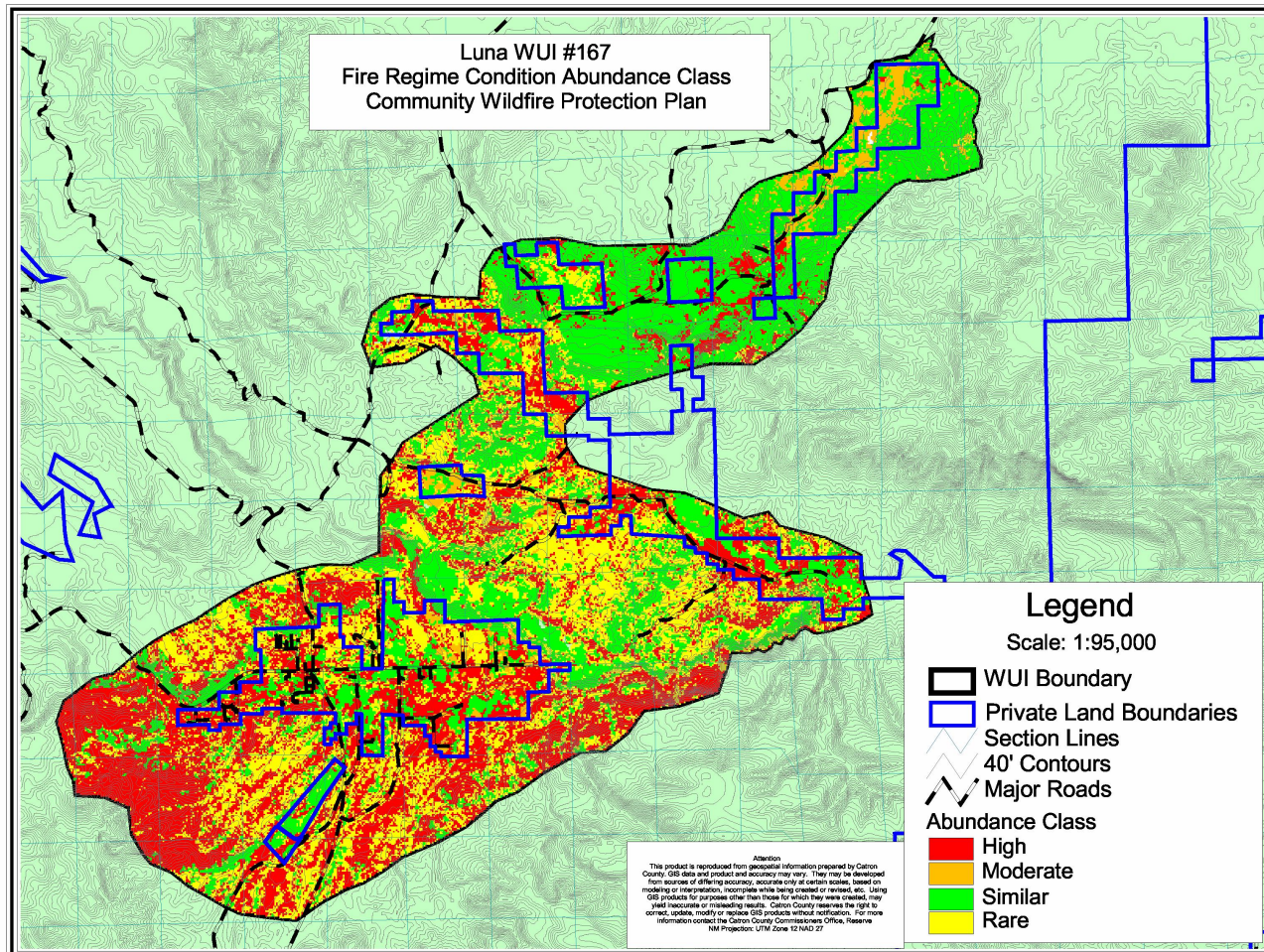
Map 4: Threatened and Endangered Species



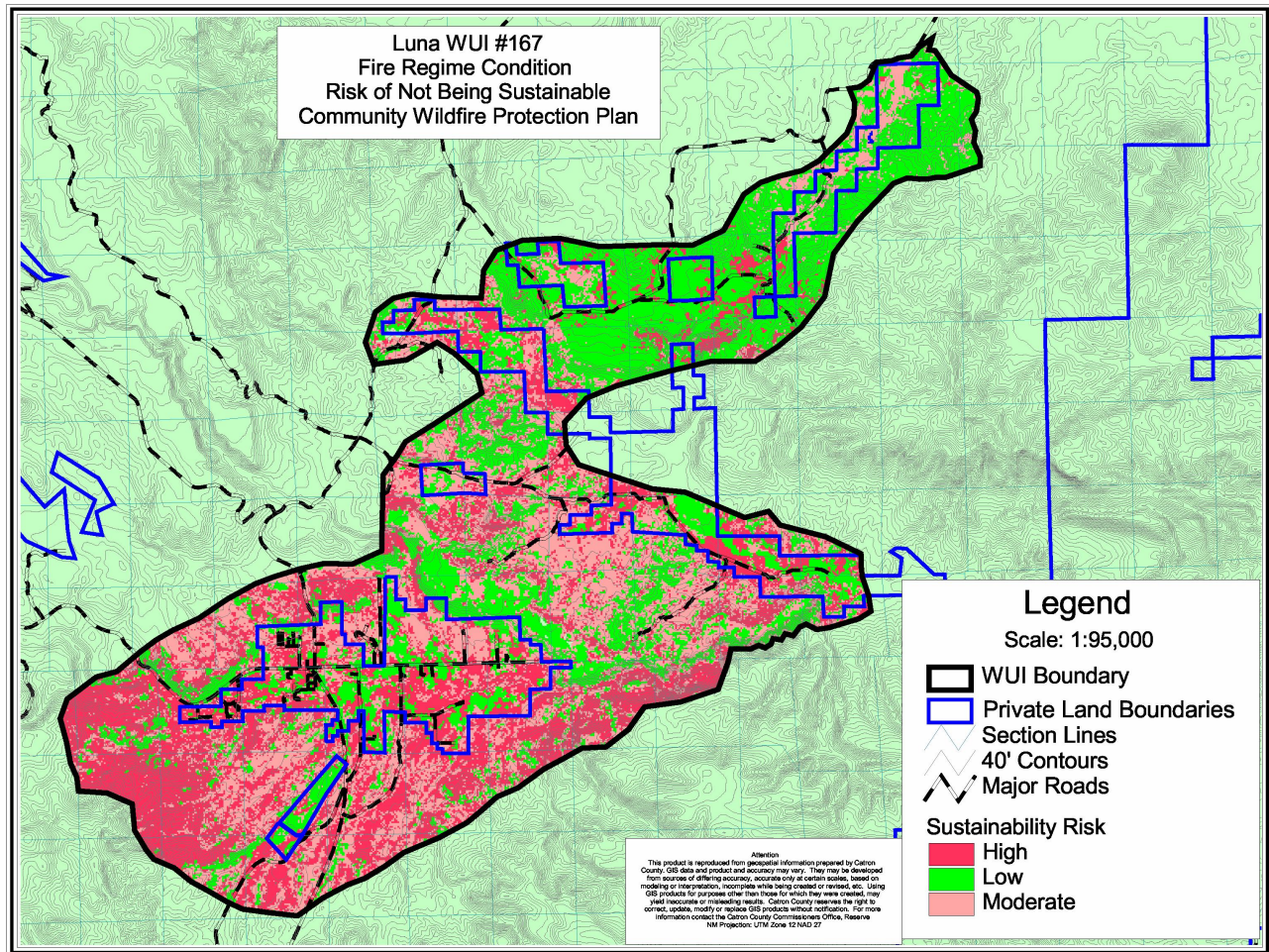
Map 5: FireThreat



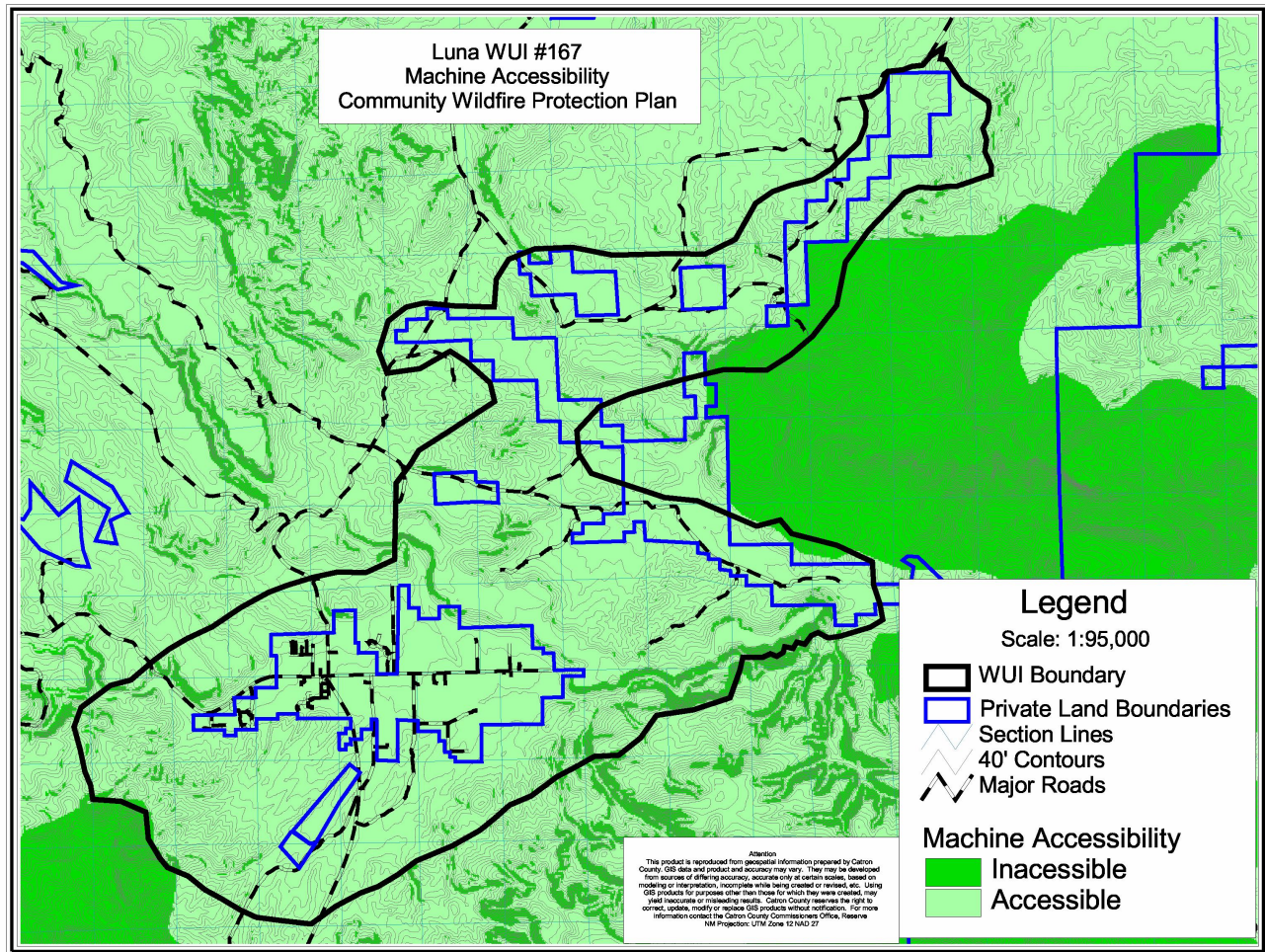
Map 6: Fire Regime Condition Class



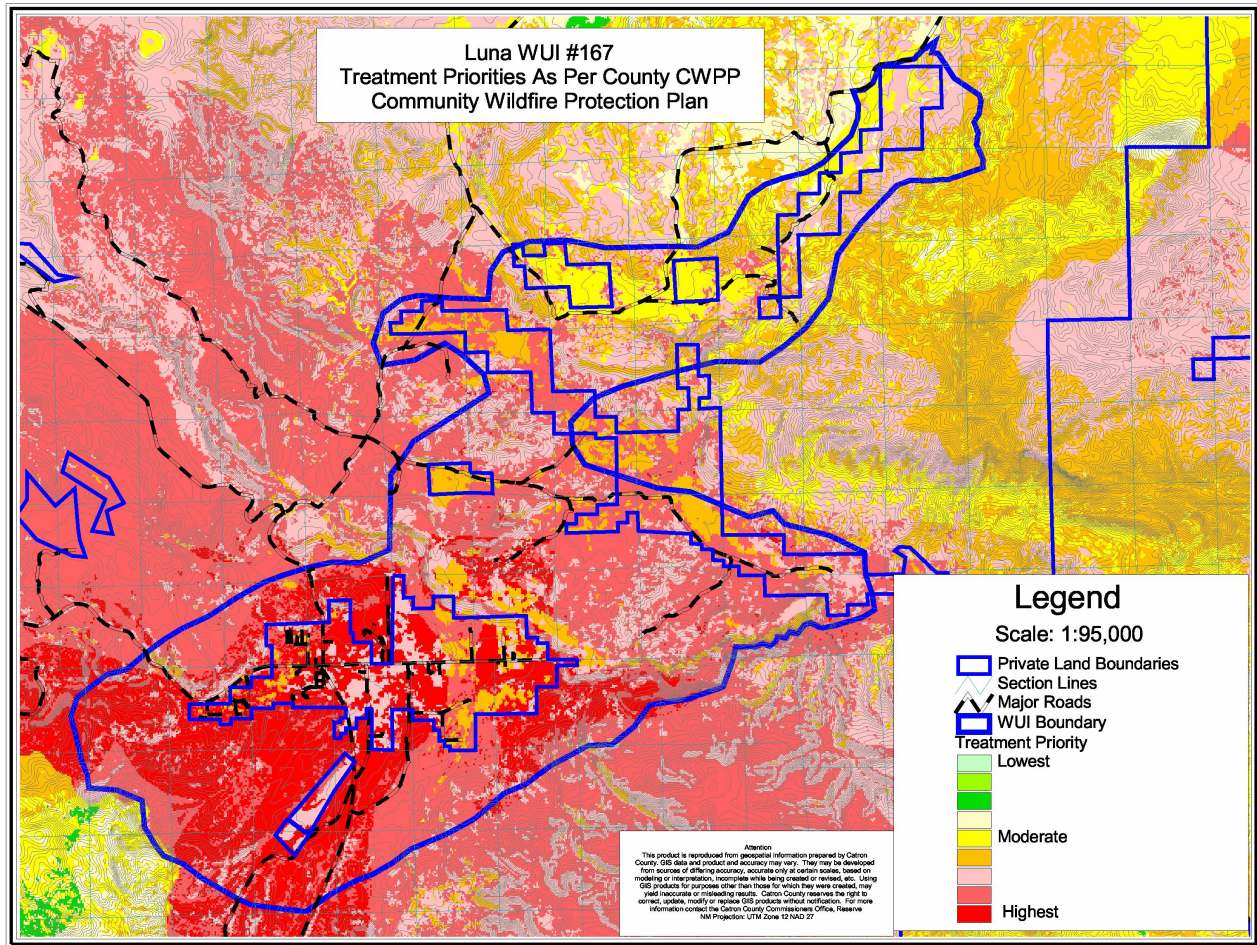
Map 7: FRCC Abundance Class



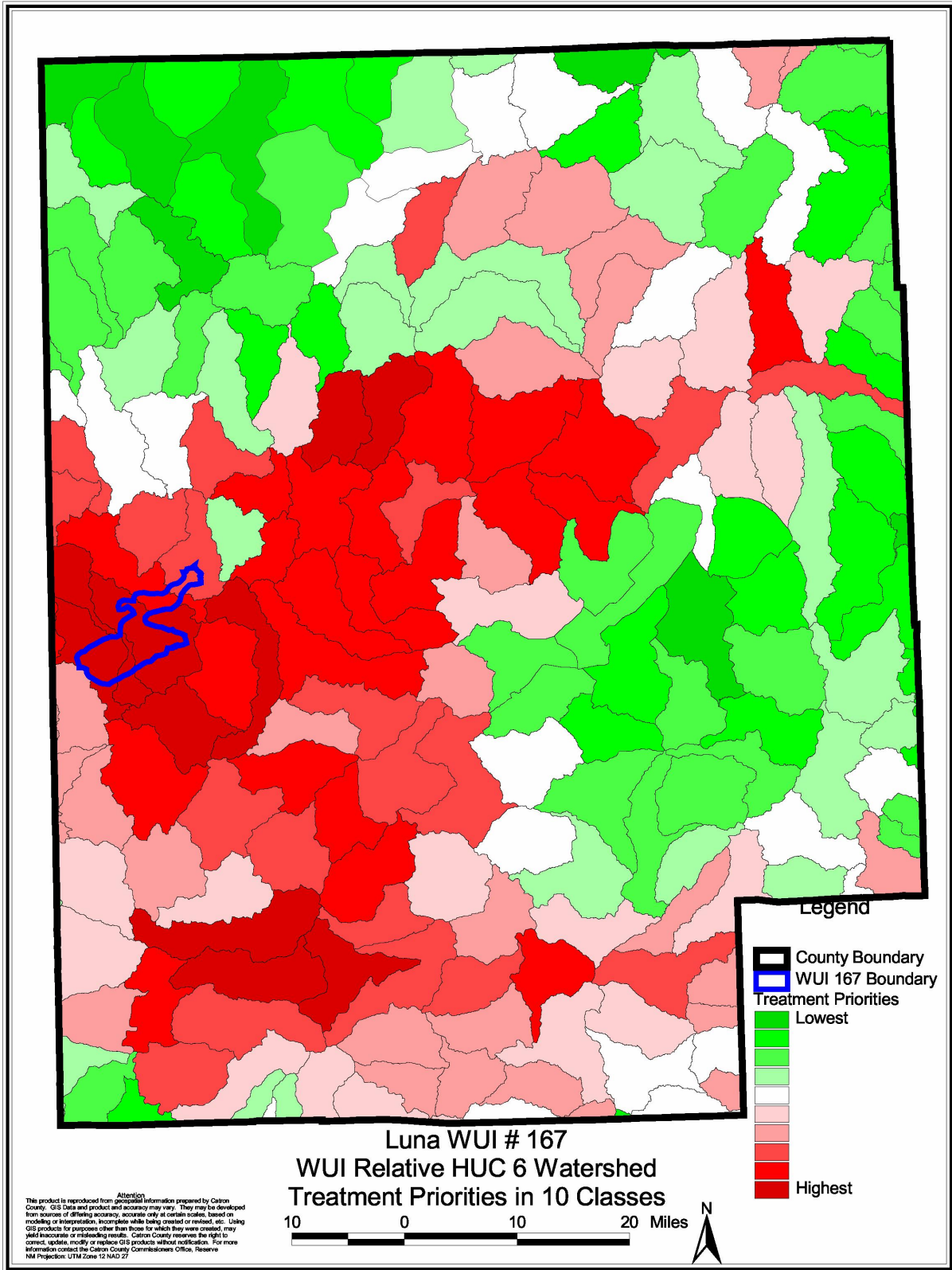
Map 8: FRCC Risk of Vegetative Condition Not Being Sustainable



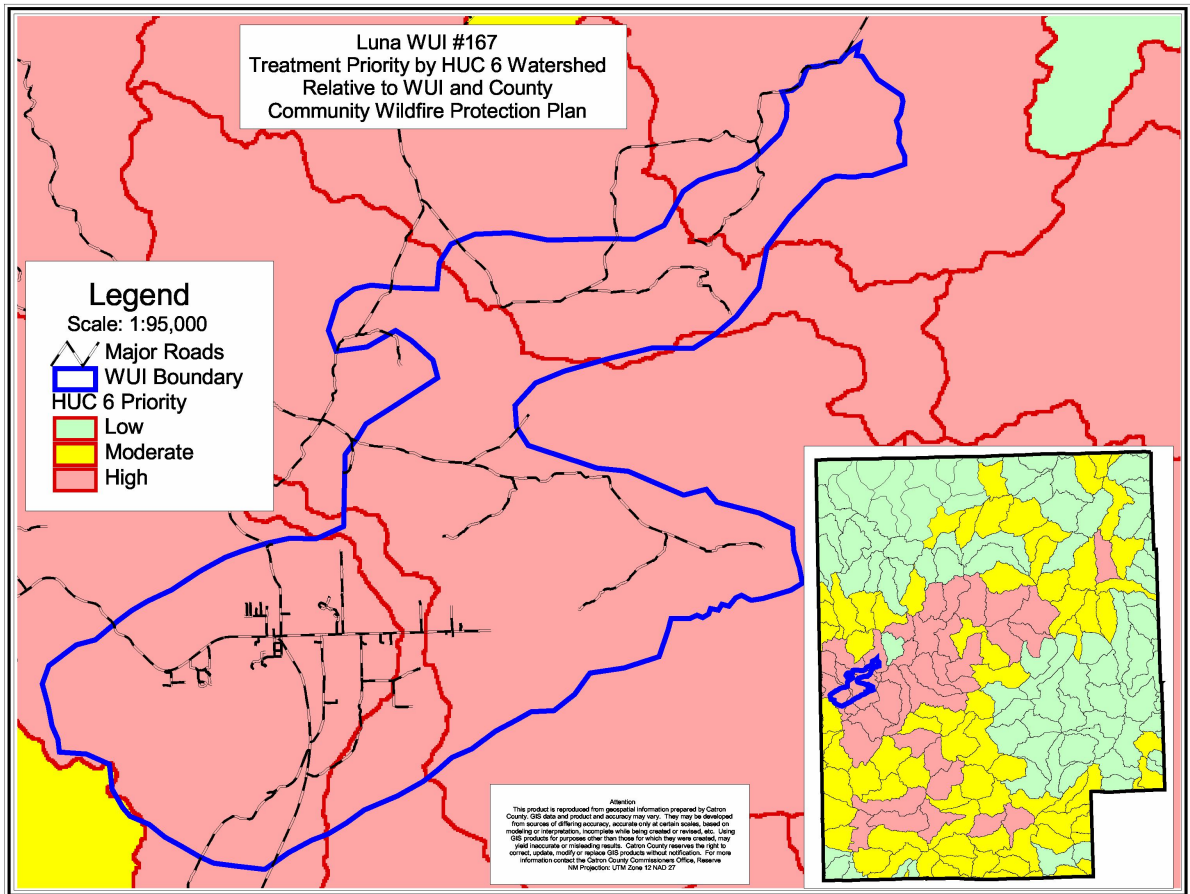
Map 9: Machine Accessible Areas



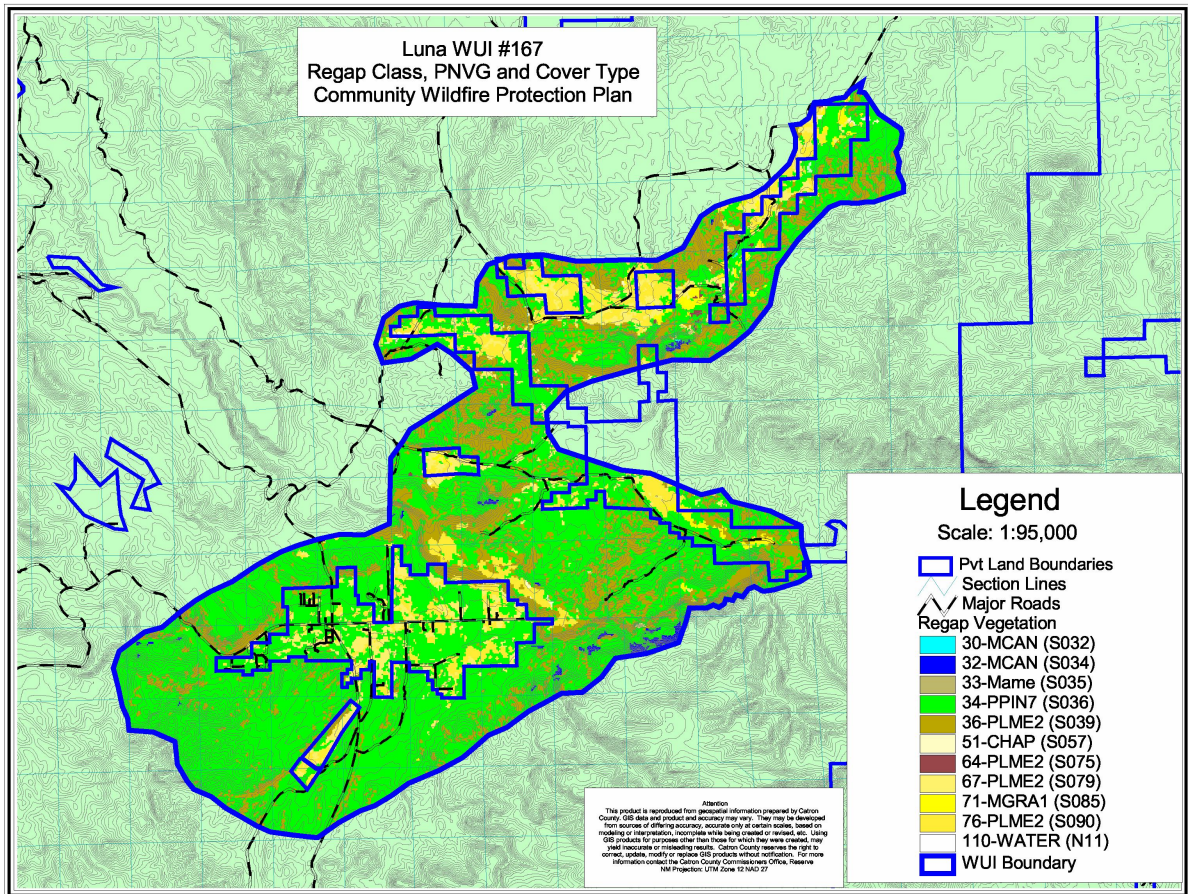
Map 10: Final Treatment Priorities



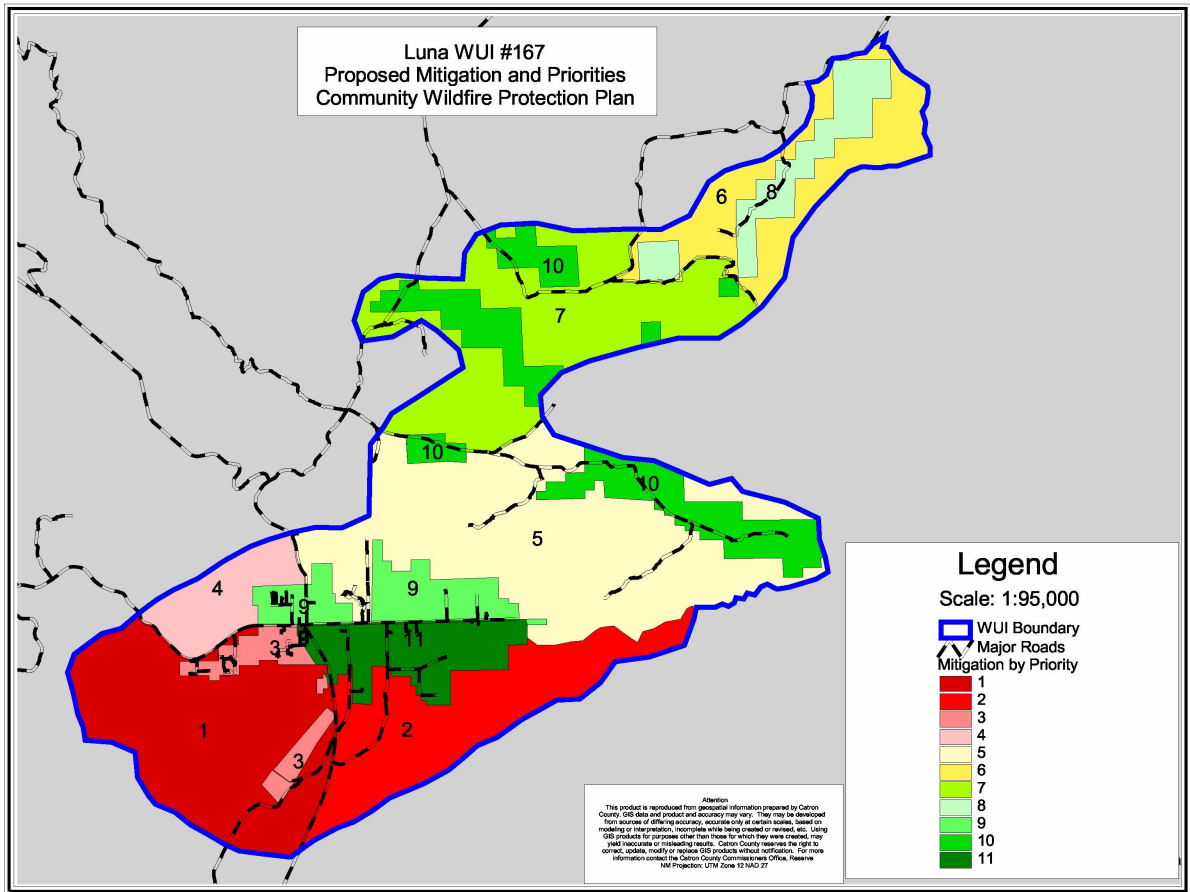
Map 11: WUI Relative to HUC 6 Watersheds



Map 12: Treatment Priority by HUC 6 Watershed



Map 13: Regap Vegetation Types



Map 14: Proposed Mitigation Priorities